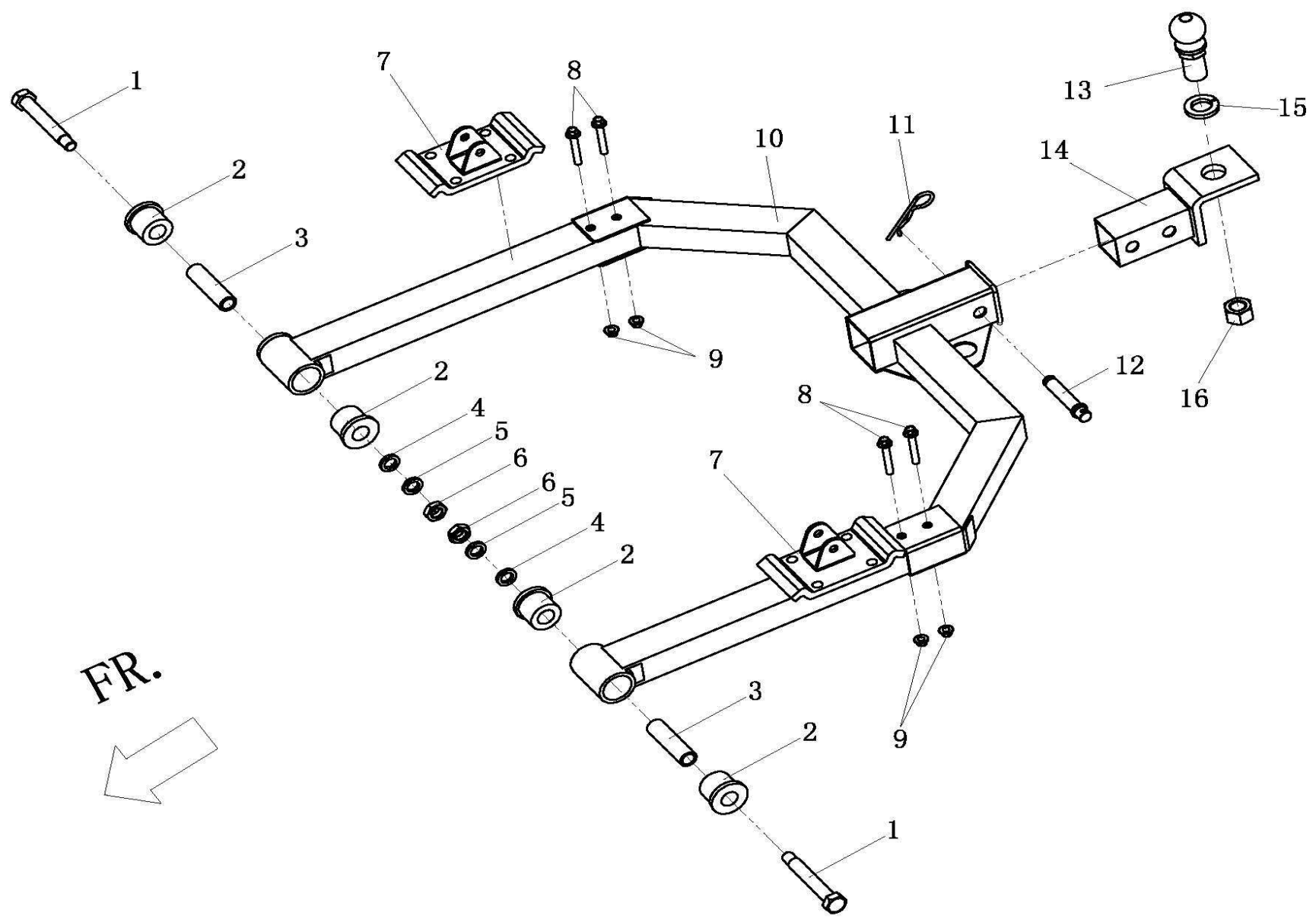
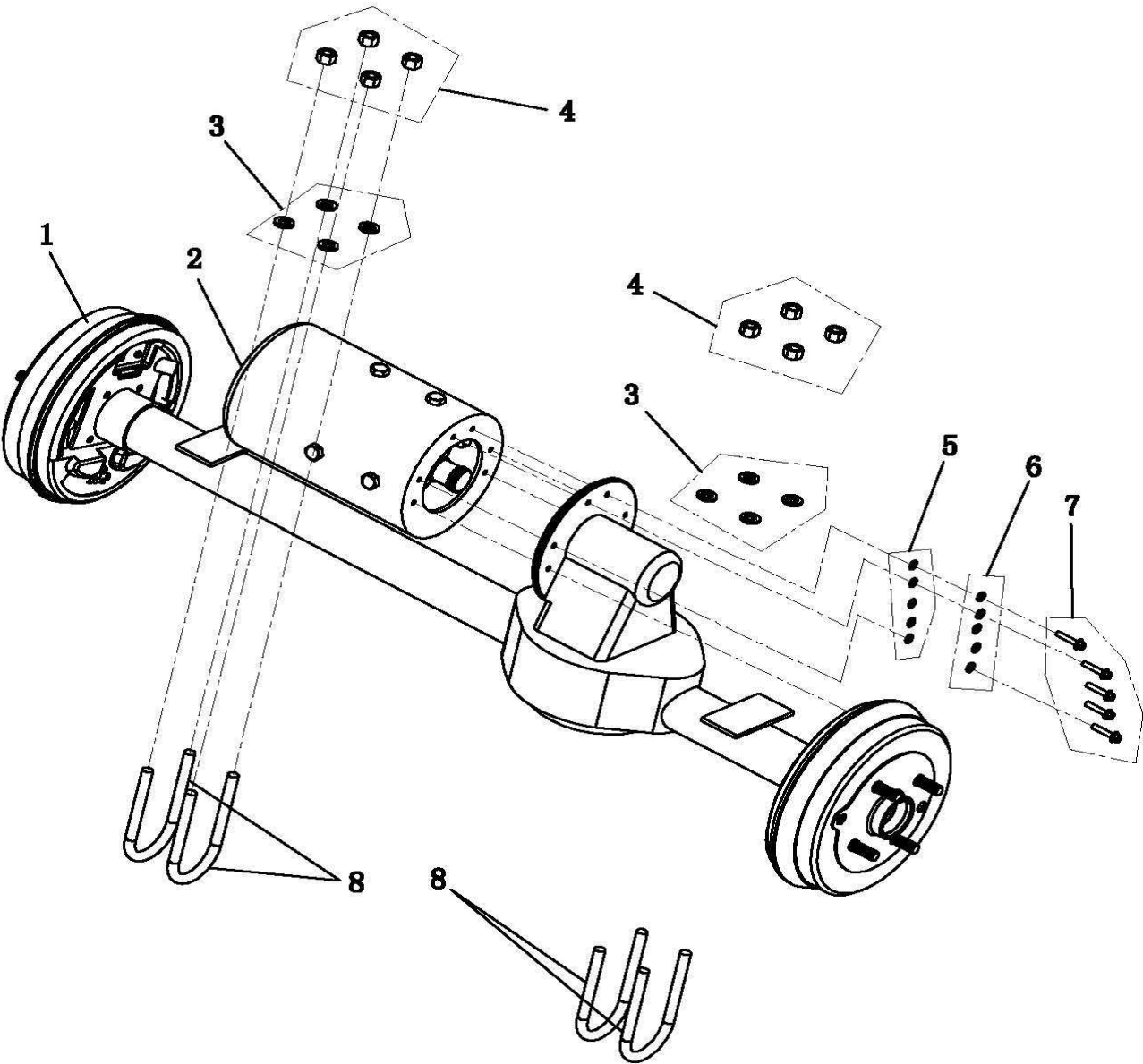


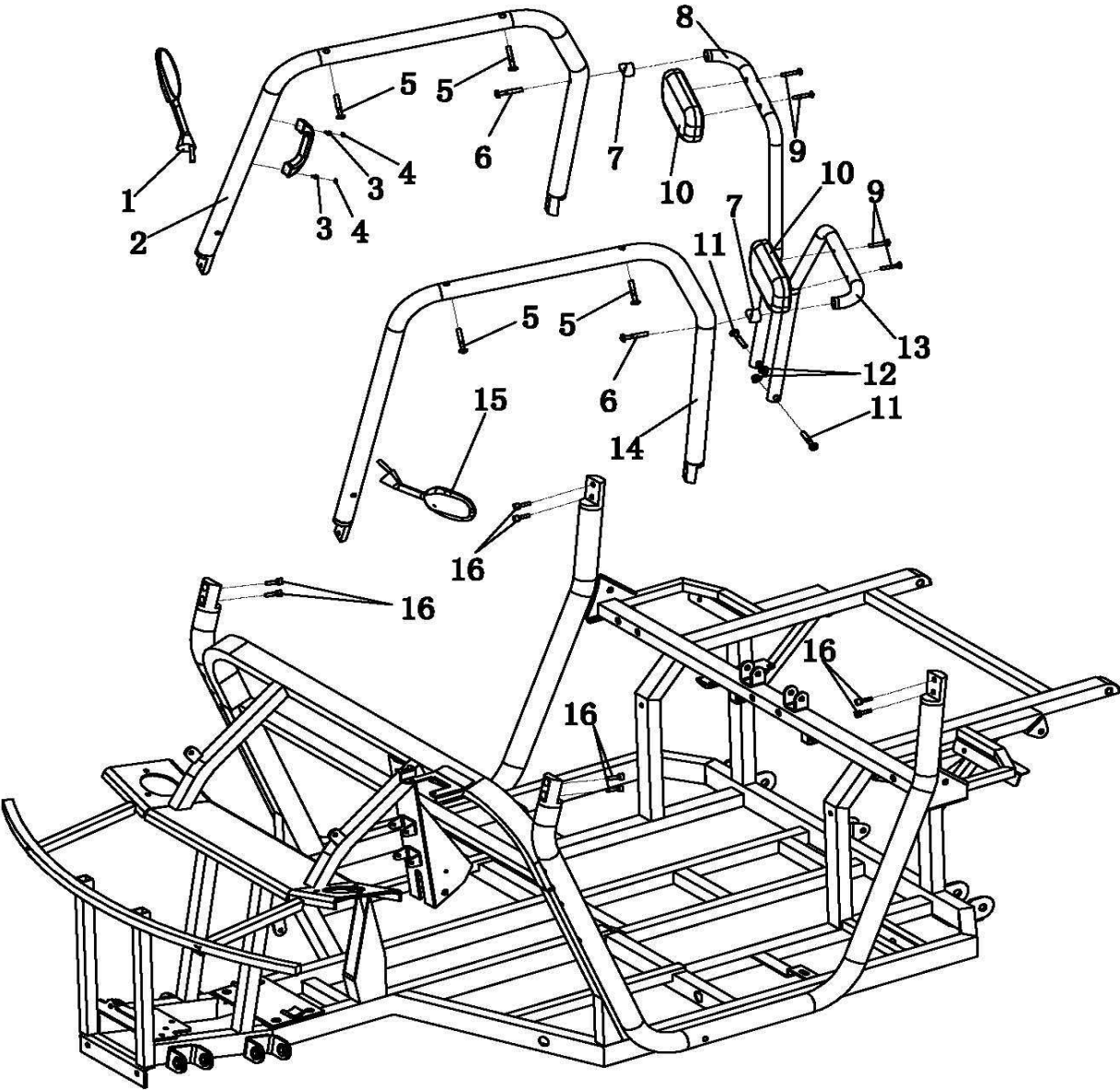
CODE		PART CODE	DESCRIPTION (EN)	Q'TY	PRIX € TTC
1		GB/T 16674.1 M8x20	BOLT,FLANGE□M8x20□	8	1
2	A1010020	31312□5000	CABLE GUIDER OF WINCH	1	40
3		GB/T 6187.1 M8	LOCKING NUT□M8□	12	1
4	j1010010	31310-3090	WINCH	1	261
5	J1201010	41000-3090	MAIN FRAME	1	2152
6	E1215010	47412-3000	FR.FRAME COVER	1	191
7	J1214010	47411-3090	FLOOR BOARD	1	226
8		49362-3090		1	38
9	A1103020	63112-3000	RR.R.SPLASH BOARD	1	42
10		63111-3090	RR.L.SPLASH BOARD	1	42
11		GB/T 818 M6x16	SCREW(M6x16)	25	0
12	A1216370	46911-5000	FIXED BLOCK,CARGO BOX	2	16
13		GB/T 16674.1 M6x20	BOLT,FLANGE□M6x20□	4	0
14		GB/T 6187.1 M6	LOCKING NUT□M6□	17	1
15		GB/T 16674.1 M8x25	BOLT,FLANGE□M8x25□	4	1
16		GB/T12617 5x16	RIVET 5x16	34	0
17		9015□060160	METER,PANEL	4	1
18	J1112020	47412-3090		1	45
19		GB/T 16674.2 M10x1.25x55	BOLT,FLANGE(M10x1.25x55)	2	4
20		GB/T 6187.2 M10x1.25	LOCKING NUT(M10x1.25)	2	1
21	A1009010	31200-5000	DUMPING PUMP	1	160
22	J1211010	47413-3090		1	52
23		GB/T12617 5x20	RIVET 5x20	10	0
24	J1102010	49363-3090		1	47



CODE		PART CODE	DESCRIPTION (EN)	Q'TY	PRIX € TTC
1		GB/T 5782 M16x110x2	BOLT(M16x110x2)	2	22
2	E1201040	41329-3000	FLANGE BUSH	4	7
3	E1201030	41332-3000	SPACER	2	7
4		GB/T 97.1 16	WASHER(φ16)	2	3
5		GB/T 93 16	SPRING WASHER(φ16)	2	1
6		GB/T 6170 M16x2	NUT(M16x2)	2	5
7	J0403020	42200-3090	RR.DRIVING AXLE HOLD-DOWN LATE	2	43
8		GB/T 16674.2 M10x1.25x65	BOLT,FLANGE(M10x1.25x65)	4	5
9		GB/T 6187.2 M10x1.25	LOCKING NUT(M10x1.25)	4	1
10	J1219010	82110-3090		1	394
11	A1219010	82132-5000	"R" PIN	1	4
12	A1219020	82123-5000	SAFETY BOLT	1	16
13	A1219030	82123-3000	HITCH BALL(3500LB 1 7/8)	1	71
14	A1219060	82120□5000	EXTENSION TUBE	1	55
15		GB/T 93 20	SPRING WASHER(φ20)	1	1
16		GB/T 6170 M20	NUT(M20)	1	5
17					0
18					0
19					0
20					0
21					0
22					0
23					0
24					0

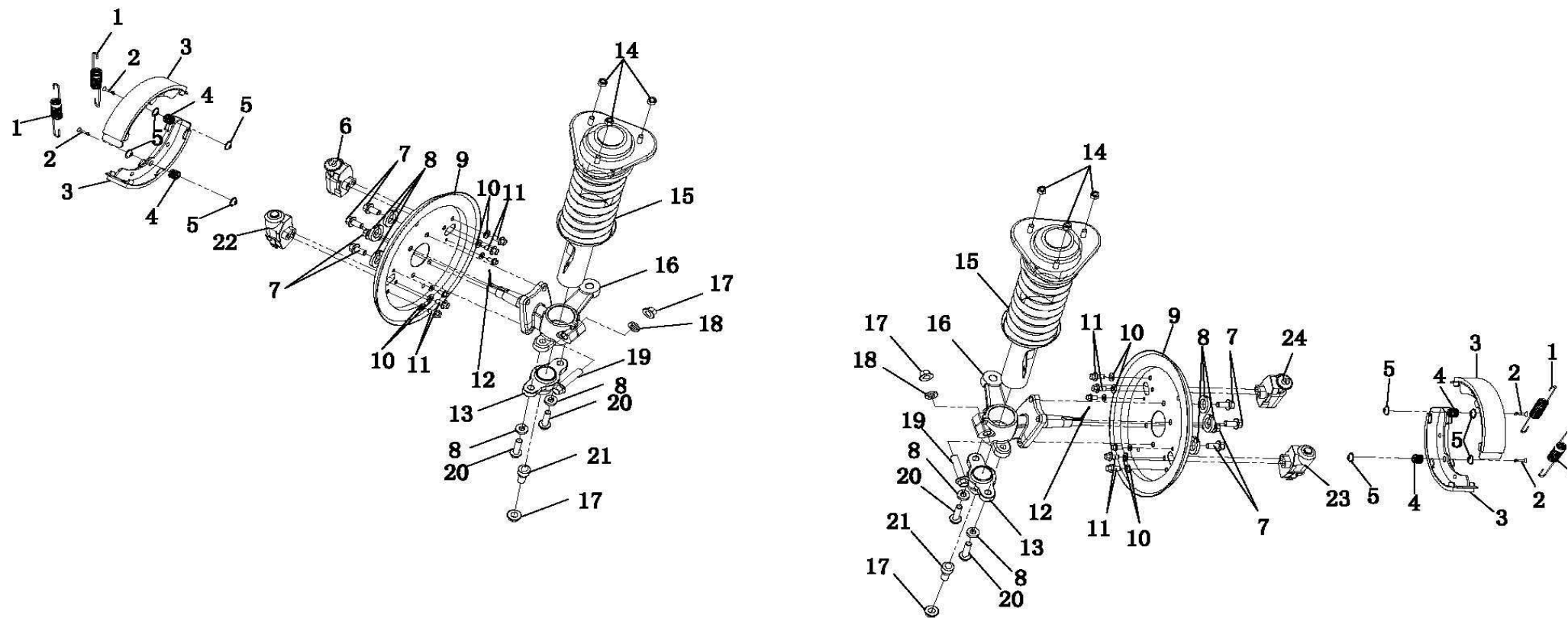


CODE		PART CODE	DESCRIPTION □ EN □	Q'TY	PRIX € TTC
1	J0403010	27420-3090	RR.DRIVING AXLE ASSY	1	2128
2	J0101010	27430-3090	ENGINE 3,8KW	1	1481
3		GB/T 93 12	SPRING WASHER □ φ12 □	8	0
4		GB/T 6170 M12	NUT □ M12 □	8	2
5		GB/T 97.1 6	WASHER(φ6)	6	0
6		GB/T 93 6	SPRING WASHER □ φ6 □	6	0
7		GB/T 16674.1 M6×30	BOLT FLANG M6×30	6	1
8	E0403020	JB/ZQ 4321 M12	BOLT,MODLE“U” □ M12 □	4	46
9				1	52
10					0
11					0
12					0
13					0
14					0
15					0
16					0
17					
18					
19					
20					
21					
22					
23					
24					



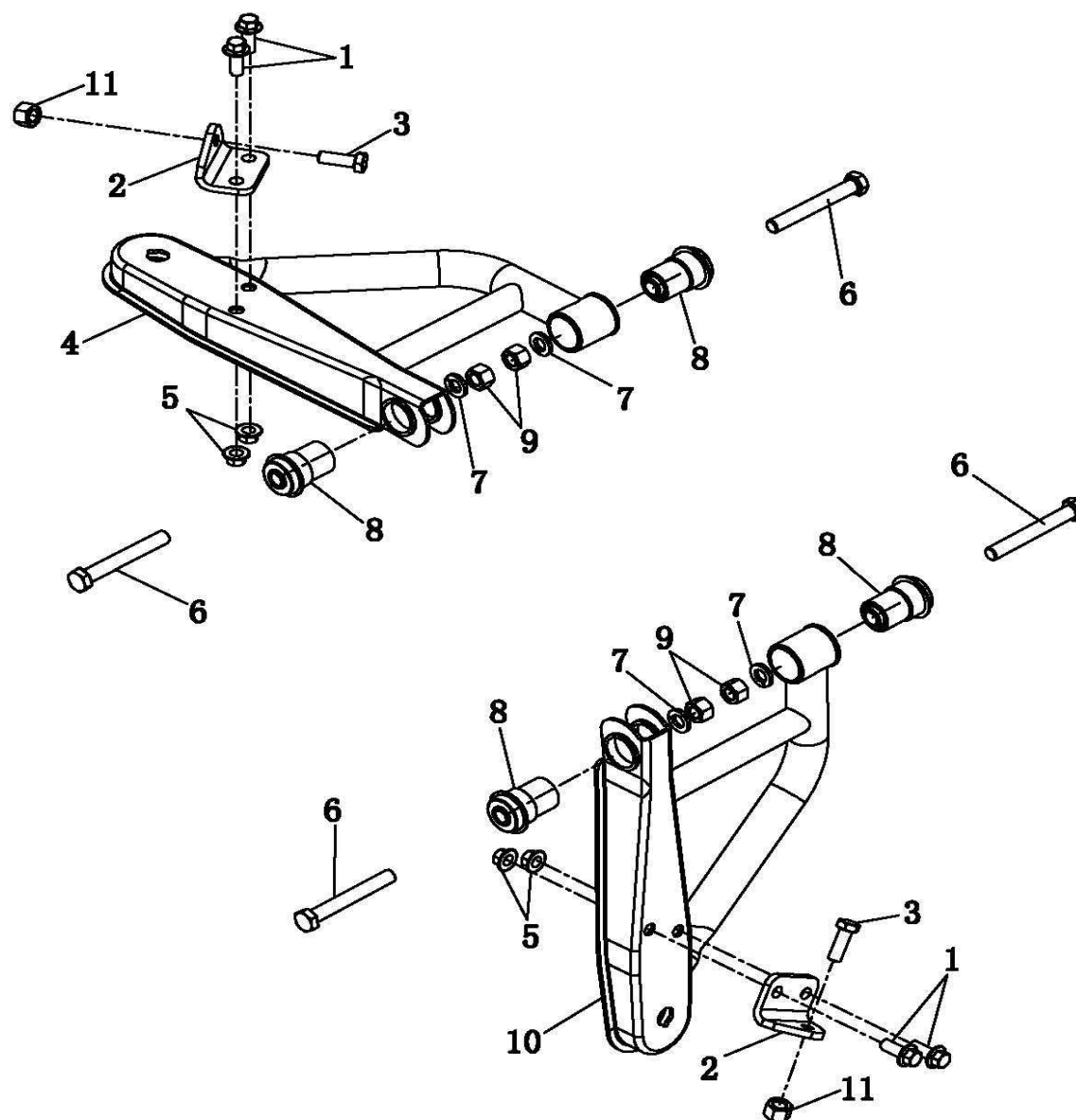
CODE		PART CODE	DESCRIPTION □ EN □	Q'TY	PRIX € TTC
1	A1008170	56610 □ 5000	REARVIEW MIRROR □ R □	1	44
2	J1202020	49120-3090	R □ MAIN PROTECT POLE □ TOP □	1	226
3		GB/T 16674.1 M6×20	BOLT, FLANGE (M6×20)	2	0
4	A1110020	49912 □ 5000	CAP OF HANDLE □ FRAM	2	3
5		GB/T 70.2 M8×55	INNER HEX SCREW (M8×55)	4	7
6		GB/T 70.2 M10×65	INNER HEX SCREW (M10×65)	2	9
7		49111-5000	JOINT □ RUBBER (φ38)	2	6
8	J1204020	49213-3090	RR.R BACKREST STAFF	1	69
9		GB/T 70.2 M8×45	INNER HEX SCREW (M8×45)	4	5
10	A1213010	49230-5000	RR.CUSHION FOR LEANING ON	2	43
11		GB/T 70.2 M10×55	INNER HEX SCREW (M10×55)	2	8
12		GB/T 6187.1 M10	LOCKING NUT (M10)	2	1
13	J1204010	49212-3090	BACKREST STAFF □ L □	1	69
14	J1202010	49110-3090	L □ MAIN PROTECT POLE □ TOP □	1	226
15	A1008160	56510 □ 5000	REARVIEW MIRROR □ L □	1	44
16		GB/T 70.1 M10×30	INNER □ BOLT □ M10×30 □	8	7
17					
18					
19					
20					
21					
22					
23					
24					

F05 FRONT SUSPENSION

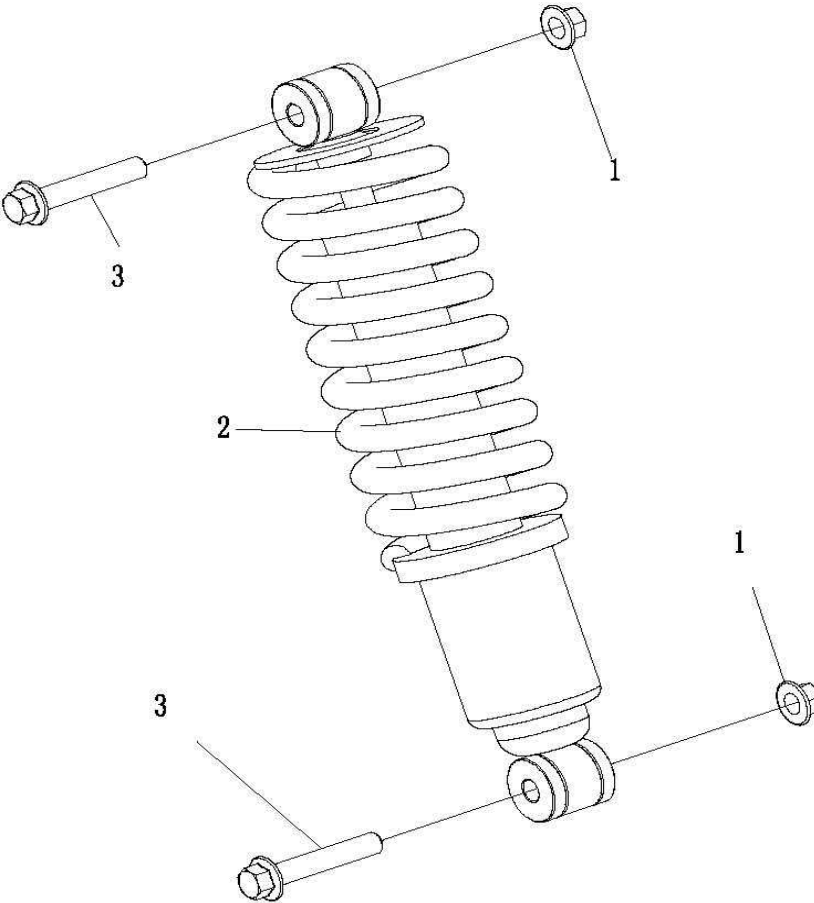
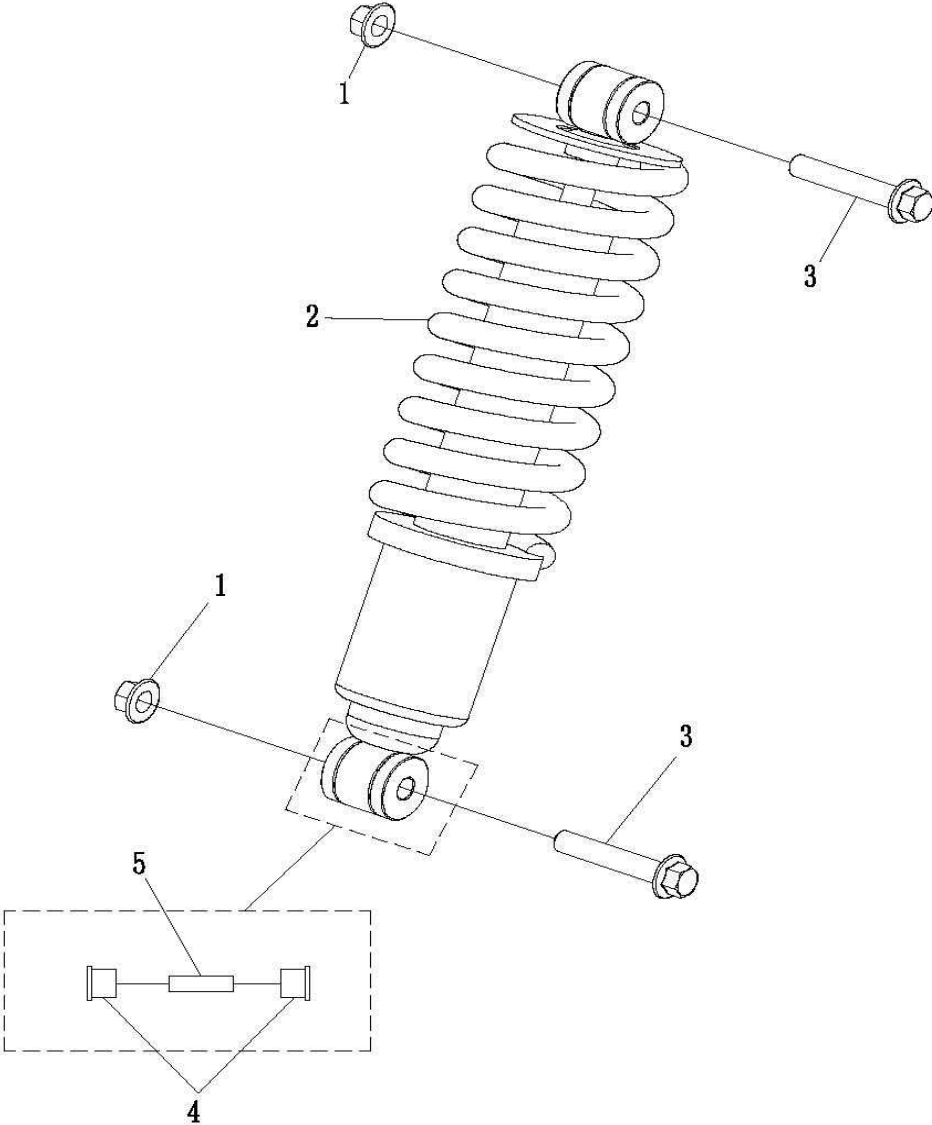


CODE		PART CODE	DESCRIPTION (EN)	Q'TY	PRIX € TTC
1	E0803080	59751-3000	SPRING,FR.BRAKE BLOCK	4	19
2	E0803060	59753-3000	FIXING PIN,BRAKE BLOCK	8	3
3	E0803040	59750-3000	FR.BRAKE BLOCK	4	69
4	E0803070	59754-3000	SPRING	4	7
5	E0803050	59752-3000	FIXING PIN,BRAKE BLOCK SEAT	8	3
6	E0802050	59732-3000	PUMP,L.RR.HYDRAULIC PRESSURE BRAKE	1	65
7		GB/T 16674.1 M10x20	BOLT,FLANGE□M10x20□	8	2
8		GB/T 93 10	SPRING WASHER(φ10)	8	0
		69824-3000□□□69834-3000□□□	COVER,FR BRAKE HUB(L)	2	69
9	E0812010	69824-3000	COVER,FR BRAKE HUB(L)	1	69
9	E0812020	69834-3000	COVER,FR BRAKE HUB(R)	1	69
10		GB/T 93 8	SPRING WASHER(φ8)	8	0
11		GB/T 16674.1 M8x12	BOLT,FLANGE(M8x12)	8	1
12		GB/T 91 3.5x35	PIN,SPLIT(φ3.5x35)	2	0
13	E0505110	52111-3000	FR.ROCKER BUTTONHEAD	2	55
14		GB/T 6187.1 M8	LOCKING NUT(M8)	6	1
15	E0501000	52100-3000	FR.SHOCK ABSORBER ASSY	2	150
16		52411-3000(□)/52421-3000(□)	FR.TRIFURCATE SHAFT(L. OR R.)	2	226
	A0503030	52421-3000(□)	FR.TRIFURCATE SHAFT(L. OR R.)	1	226
	A0503010	52411-3000(□)	FR.TRIFURCATE SHAFT(L. OR R.)	1	226
17		GB/T 6171.2 M12x1.75	NUT(M12x1.75)	2	2
18		GB/T 93 12	SPRING WASHER□φ12□	2	0
19		GB/T 5786.2 M12x55x1.75	BOLT□M12x55x1.75□	2	11
20		GB/T 16674.1 M10x40	BOLT,FLANGE□M10x40□	4	3
21		42112-3000	FR.ROCKER BUTTONHEAD,BOLT	2	39

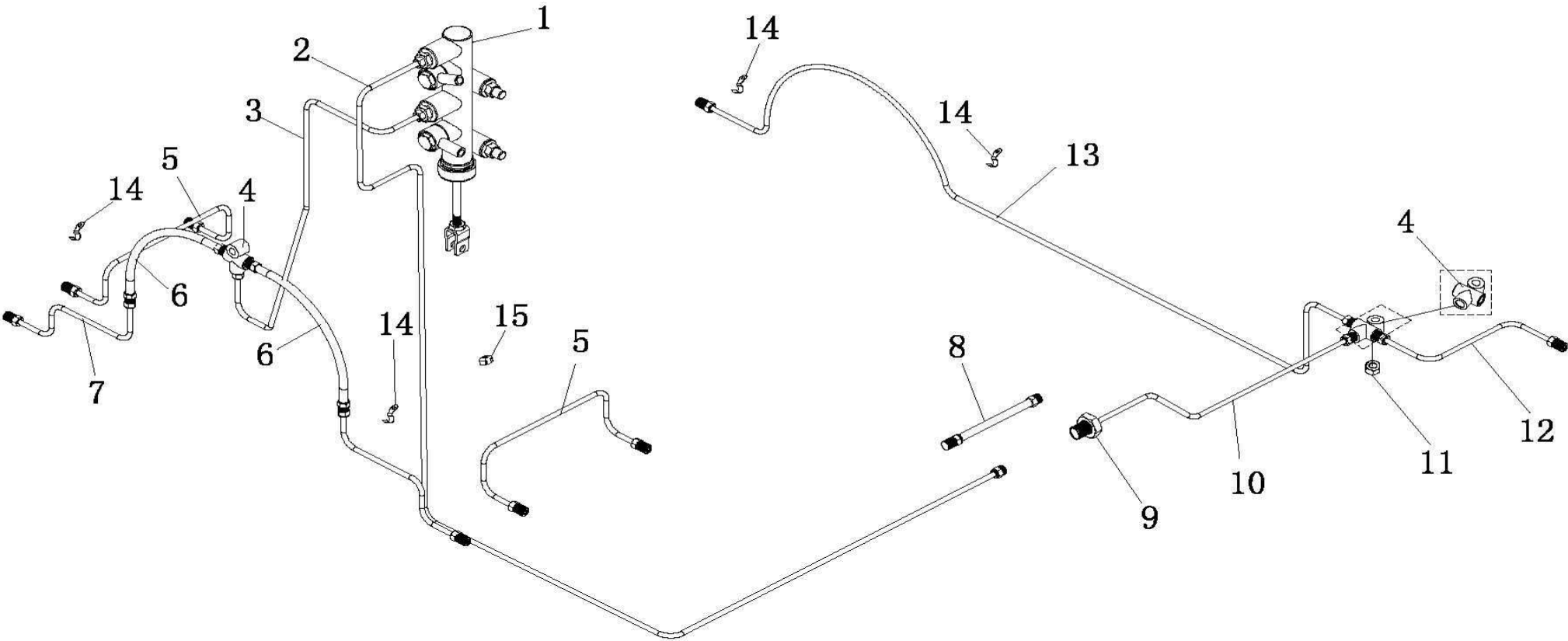
22	E0802030	59731-3000	PUMP,L.FR.HYDRAULIC PRESSURE BRAKE	1	65
23	E0802040	59733-3000	PUMP,R.FR.HYDRAULIC PRESSURE BRAKE	1	65
24	E0802060	59734-3000	PUMP,R.RR.HYDRAULIC PRESSURE BRAKE	1	65



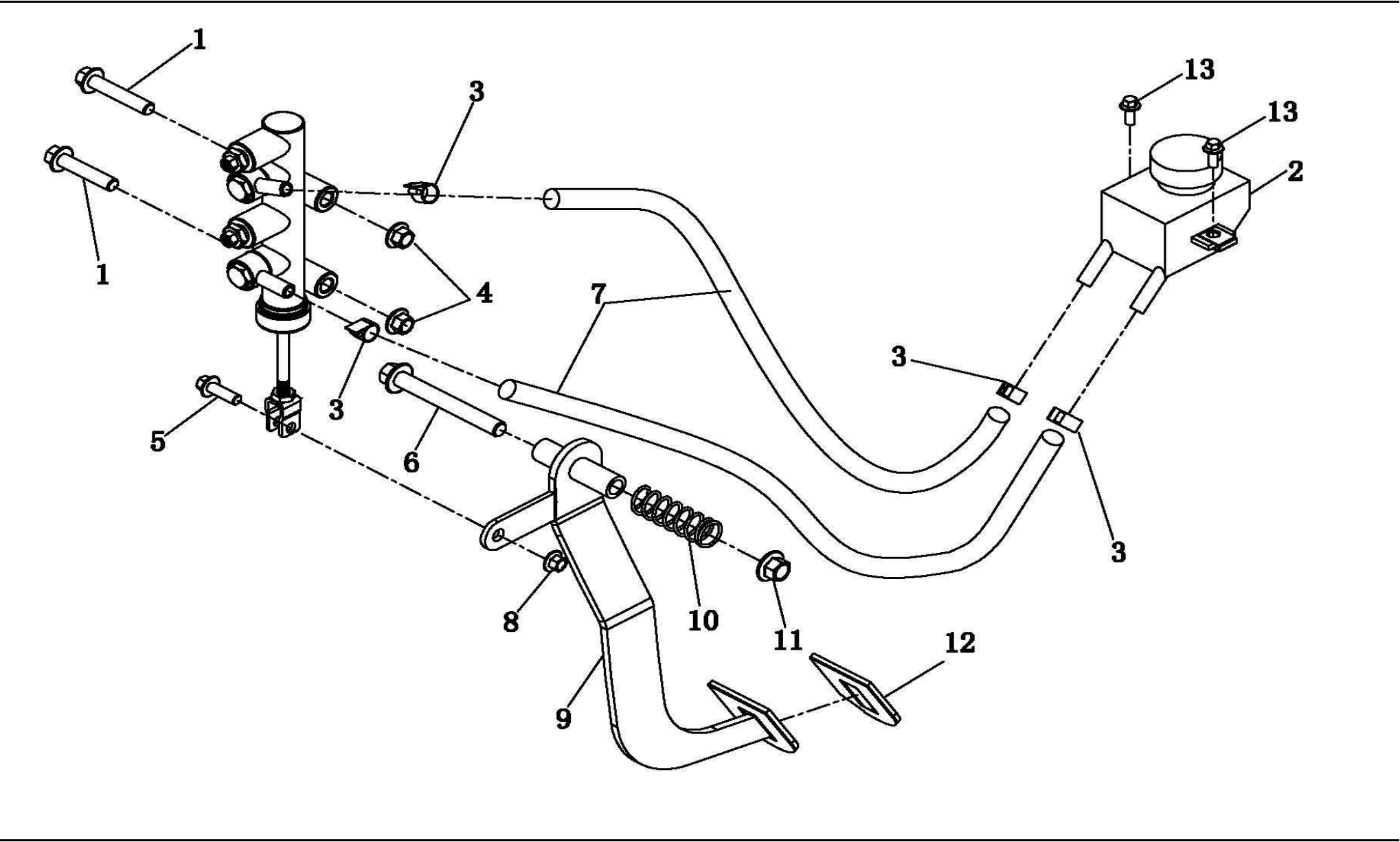
CODE		PART CODE	DESCRIPTION (EN)	Q'TY	PRIX € TTC
1		GB/T 16674.1 M10×25	BOLT,FLANGE□M10×25□	4	2
2		52444-3000	LIMIT,IRON	2	11
	E0906020	52424-3000	LIMIT,IRON	1	11
	E0906030	52444-3000	LIMIT,IRON	1	11
3		GB/T 5783.2 M10×30×1.5	BOLT(M10×30×1.5)	2	3
4	E0505060	52320-3000	L.FR.LOWER SWING ARM	1	61
5		GB/T 6187.2 M10×1.25	LOCKING NUT(M10×1.25)	4	1
6		GB/T 5782.2 M12×90×1.75	BOLT(M12×90×1.75)	4	17
7		GB/T 93 12	SPRING WASHER(φ12)	4	0
8		52361-3000	BUFFER COVER	4	43
9		GB/T 6170 M12	NUT(M12×1.75)	4	2
10	E0505050	52330-3000	R.FR.LOWER SWING ARM	1	61
11		GB/T 6171.2 M10×1.5	NUT(M10×1.5)	2	0



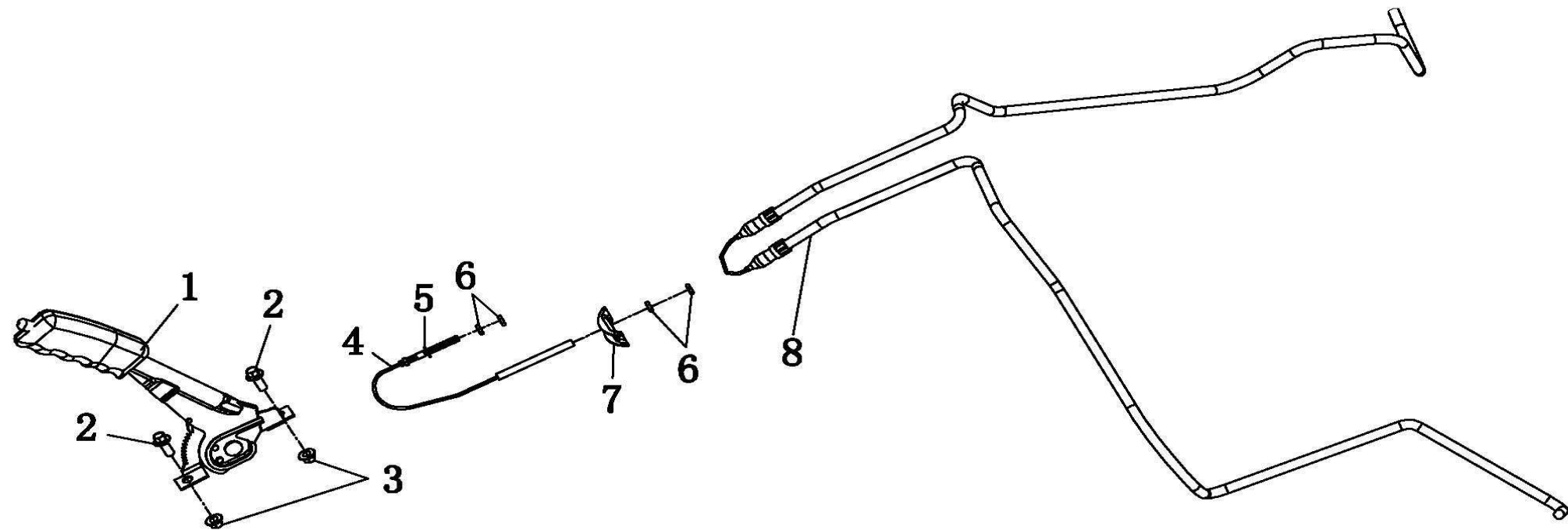
CODE		PART CODE	DESCRIPTION (EN)	Q'TY	PRIX € TTC
1		GB/T 6187.1 M10	LOCKING NUT(M10)	4	1
2	J0502010	52200-3090	RR.SHOCK ABSORBER ASSY	2	90
3		GB/T 16674.1 M10×55	BOLT,FLANGE(M10×55)	4	4
4		52211-3000	SPACER	8	12
5		52212-3000	IRON□SPACER	4	12
6					
7					
8					
9					
10					
11					
12					
13					
14					
15					
16					
17					
18					
19					
20					
21					
22					
23					
24					



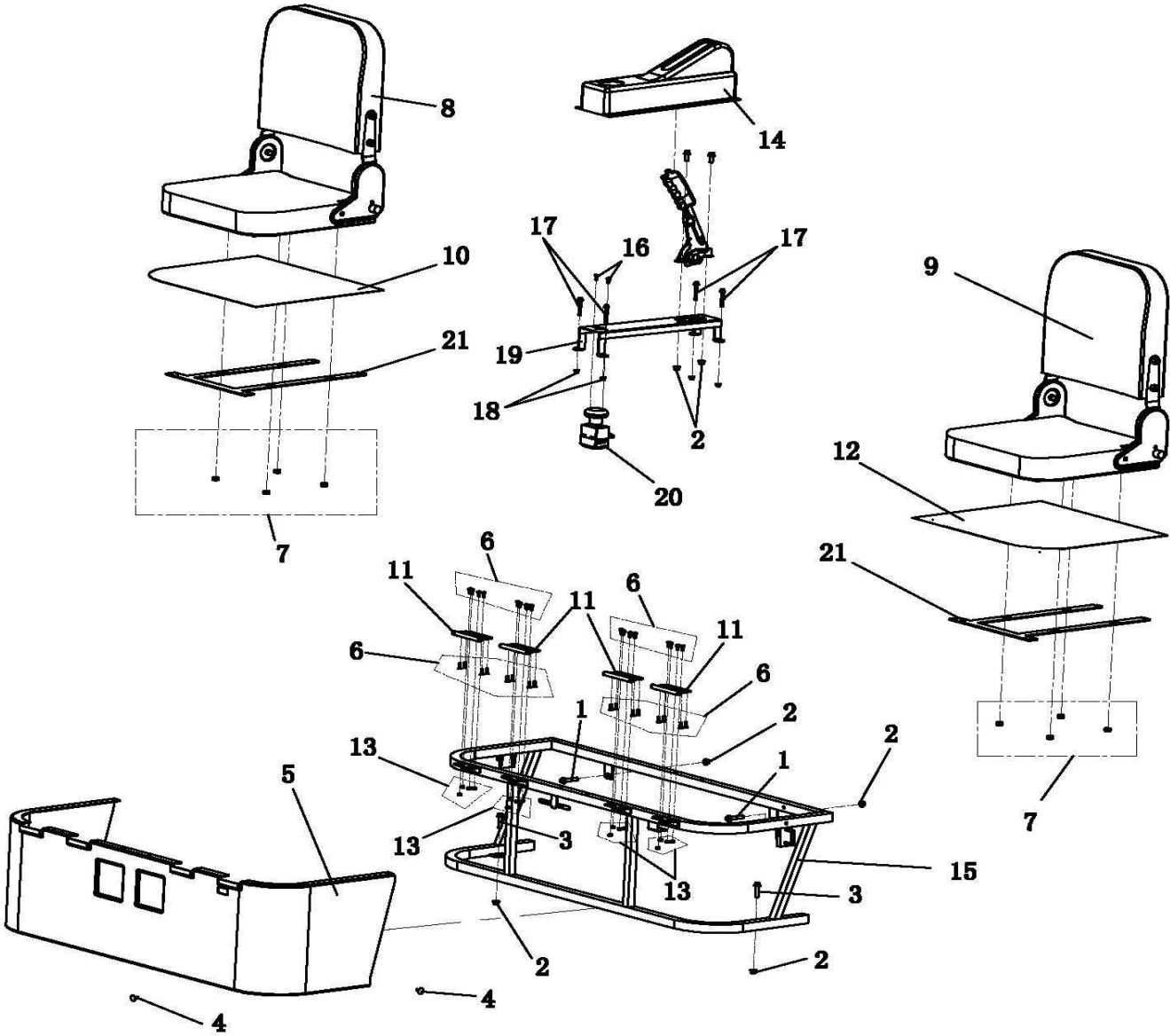
CODE		PART CODE	DESCRIPTION (EN)	Q'TY	PRIX € TTC
1	A0801010	59721□5000	BRAKE PUMP	1	97
2	J0805010	59512-3090	COPPER OIL TUBE,HYDRAULIC PRESSURE BRAKE	1	37
3	E0805130	59513-3000	COPPER OIL TUBE,HYDRAULIC PRESSURE BRAKE	1	37
4	A0807010	59741-3000	HYDRAULIC BRAKE VITTA T-PIECE	2	37
5	E0805110	59512-3090	COPPER OIL TUBE,HYDRAULIC PRESSURE BRAKE	2	19
6	A0805020	59521□5000	FR.HYDRAULIC BRAKE VITTA	2	71
7		59521-3090	COPPER OIL TUBE,HYDRAULIC PRESSURE BRAKE	2	35
8	A0805010	59522-5000	RR.HYDRAULIC BRAKE VITTA	1	53
9		GB/T 6170 M16	NUT(M16)	1	5
10	E0805140	59516-3000	COPPER OIL TUBE,HYDRAULIC PRESSURE BRAKE	1	23
11		GB/T 6170 M8	NUT(M8)	1	0
12	E0805150	59514-3000	COPPER OIL TUBE,HYDRAULIC PRESSURE BRAKE	1	20
13	E0805160	59515-3000	COPPER OIL TUBE,HYDRAULIC PRESSURE BRAKE	1	35
14	A0807020	59611-3000		4	7
15		59612-3000		1	7
16					
17					
18					
19					
20					
21					
22					
23					
24					



CODE		PART CODE	DESCRIPTION (EN)	Q'TY	PRIX € TTC
1		GB/T 16674.1 M10×55	BOLT,FLANGE(M10×55)	2	4
2	A0804000	59711-5000	BRAKE CUP	1	27
3	S0301003	9852-190213	CLAMP(φ13-φ19)	4	3
4		GB/T 6187.1 M10	LOCKING NUT(M10)	2	1
5		GB/T 16674.1 M8×25	BOLT,FLANGE(M8×25)	1	1
6		GB/T 16674.2 M12×1.25×95	BOLT,FLANGE(M12×1.25×95)	1	17
7		59712-3000	HYDRAULIC BRAKE VITTA	1	39
8		GB/T 6187.1 M8	LOCKING NUT(M)	1	1
9		28830-3000	RRAKE PEDAL	1	54
10		28833-3200	PEPLACEMENT SPRING,BRAKE PEDAL	1	3
11		GB/T 6187.2 M12×1.25	LOCKING NUT(M12×1.25)	1	3
12		28838-5000	PAD,BRAKE PEDAL	1	23
13		GB/T 16674.1 M6×15	BOLT,FLANGE(M6×15)	2	0
14					
15					
16					
17					
18					
19					
20					
21					
22					
23					
24					

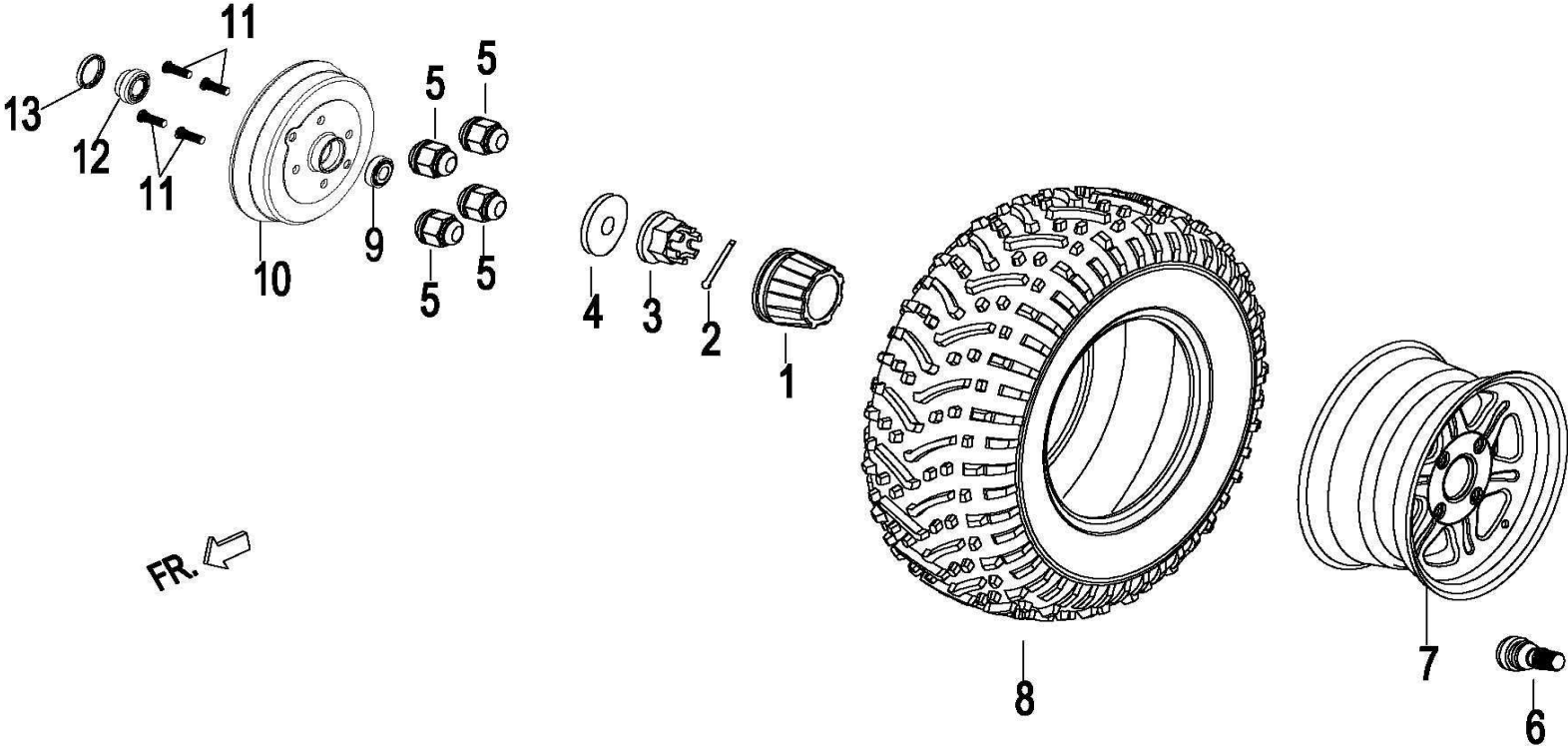


CODE		PART CODE	DESCRIPTION (EN)	Q'TY	PRIX € TTC
1		69840-3000	HAND BRAKE HANDLE	1	69
2		GB/T 16674.1 M8×20	BOLT,FLANGE(M8×20)	2	1
3		GB/T 6187.1 M8	LOCKING NUT(M8)	2	1
4		58580-3000	HAND BRAKE LINE	1	57
5		GB/T 97.1 6	WASHER(φ20×φ6×1)	1	2
6		GB/T 6170 M6	BOLT(M6)	4	0
7		34412-3000	FIXING BRACKET,HAND BRAKE LINE	1	16
8		58581-3090		1	57
9					
10					
11					
12					
13					
14					
15					
16					
17					
18					
19					
20					
21					
22					
23					
24					



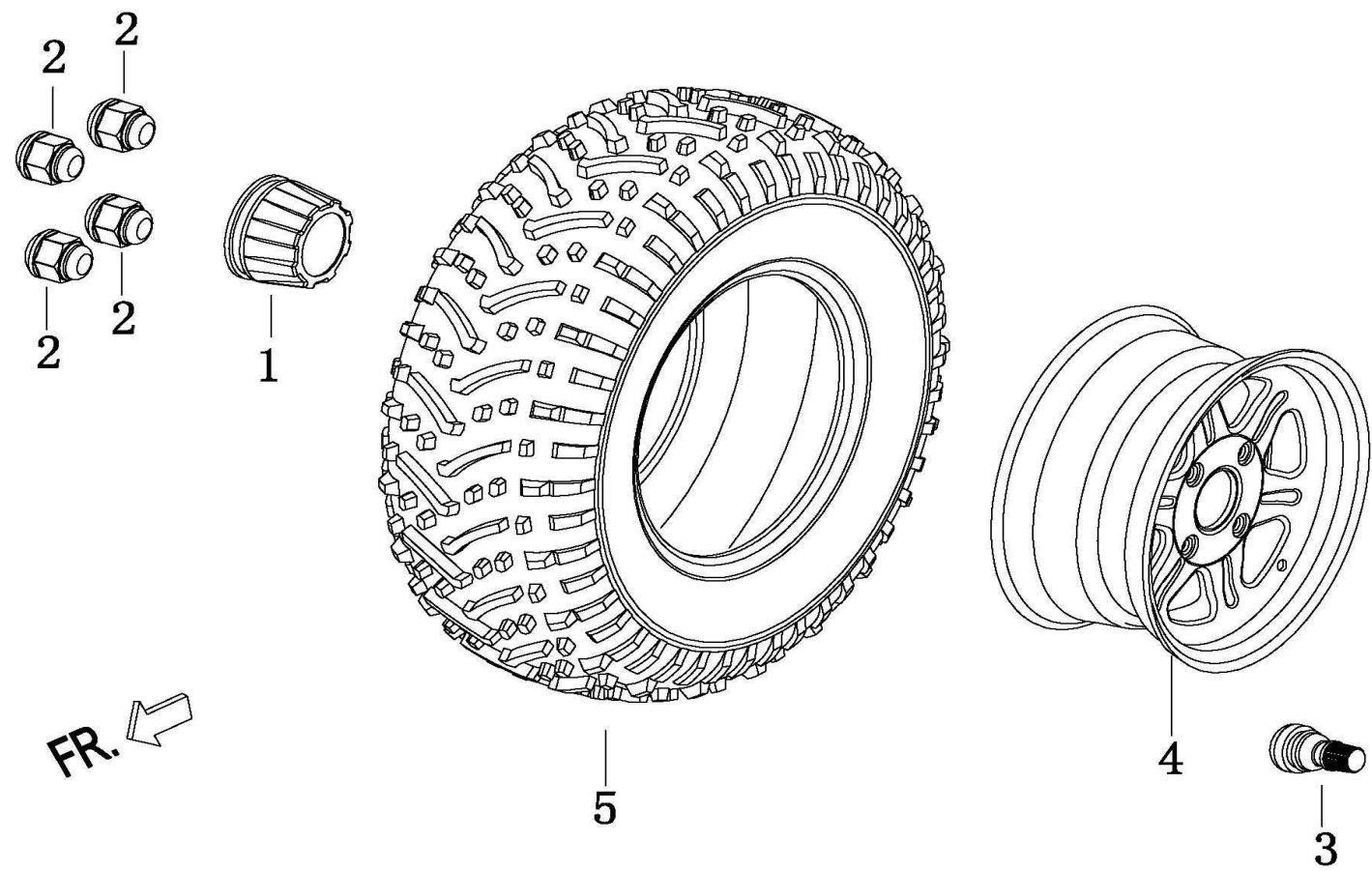
CODE		PART CODE	DESCRIPTION (EN)	Q'TY	PRIX € TTC
1		GB/T 16674.1 M8x45	BOLT,FLANGE(M8x45)	2	2
2		GB/T 6187.1 M8	LOCKING NUT(M8)	6	1
3		GB/T 16674.1 M8x35	BOLT,FLANGE(M8x35)	2	2
4		GB/T12617 5x20	RIVET 5x20	30	0
5		47396-3090	SEAT BOX COVER	1	181
6		GB/T 819.1 M5x12	SCREW(M5x12)	32	0
7		GB/T 6170 M8	BOLT(M8)	8	0
8		49310-5000	L.SEAT	1	242
9		49320-5000	R.SEAT	1	242
10		47398-3090		1	59
11		49391-3000	GEMEL	4	35
12		47397-3090		1	59
13		GB/T 6170 M5	BOLT(M5)	16	0
14		47399-3090		1	28
15		49301-3090	SEAT BOX	1	218
16		GB/T 818 M5x12	SCREW(M5x12)	4	0
17		GB/T 16674.1 M6x45	BOLT,FLANGE(M6x45)	4	1
18		GB/T 6187.1 M6	LOCKING NUT(M6)	4	1
19		49320-3090		1	58
20		37111-3090		1	87
21		49330-3090		2	67
22					
23					
24					

F12 FRONT WHEEL ASSY

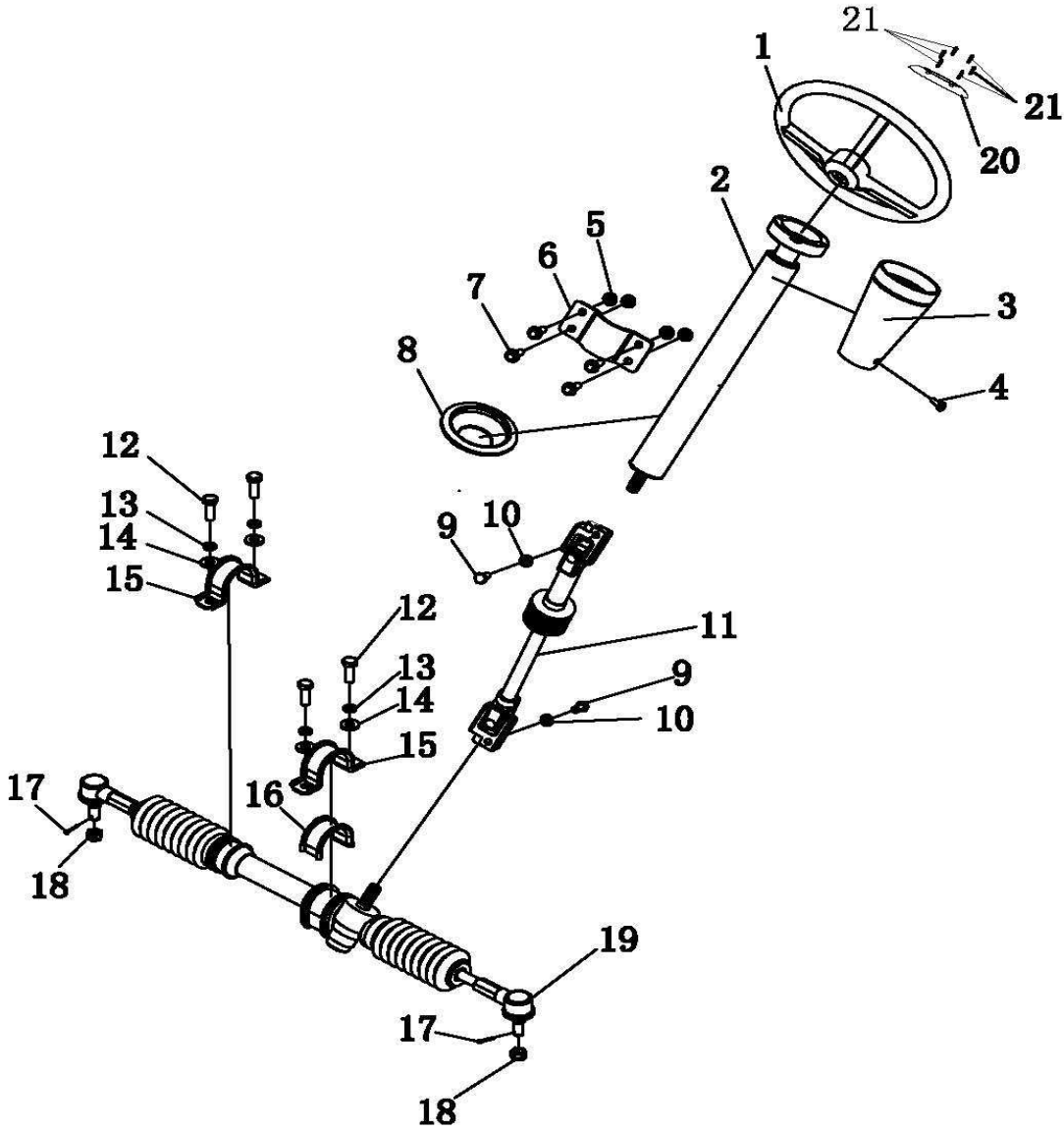


CODE		PART CODE	DESCRIPTION (EN)	Q'TY	PRIX € TTC
1		47391-5000	CAP,WHEEL CENTER	2	11
2		GB/T 91 3.5×35	SPLIT PIN(φ3.5×35)	2	0
3		GB/T 9457 M20×1.5	NUT,CASTLE(M20×1.5)	2	11
4		54113-5000	WASHER	2	8
5		9422-120255	NUT,WHEEL(M12×1.25)	8	4
6		55190-5000	VALVE,RIM	2	7
7		54111-5000	RIM,FR.WHEEL	2	277
8		55111-5000	FR.TYRE□25×8□12□	2	182
9		GB/T 276 30204-2	TAPER BEARING(30204-2)	2	36
10		59761-3000	FR.BRAKE HUB	2	80
11		9291-120303	BOLT,WHEEL(M12×35×1.25)	8	35
12		GB/T 276 30205-2	TAPER BEARING(30205-2)	2	40
13		54112-3000	OIL SEAL	2	40
14					
15					
16					
17					
18					
19					
20					
21					
22					
23					
24					

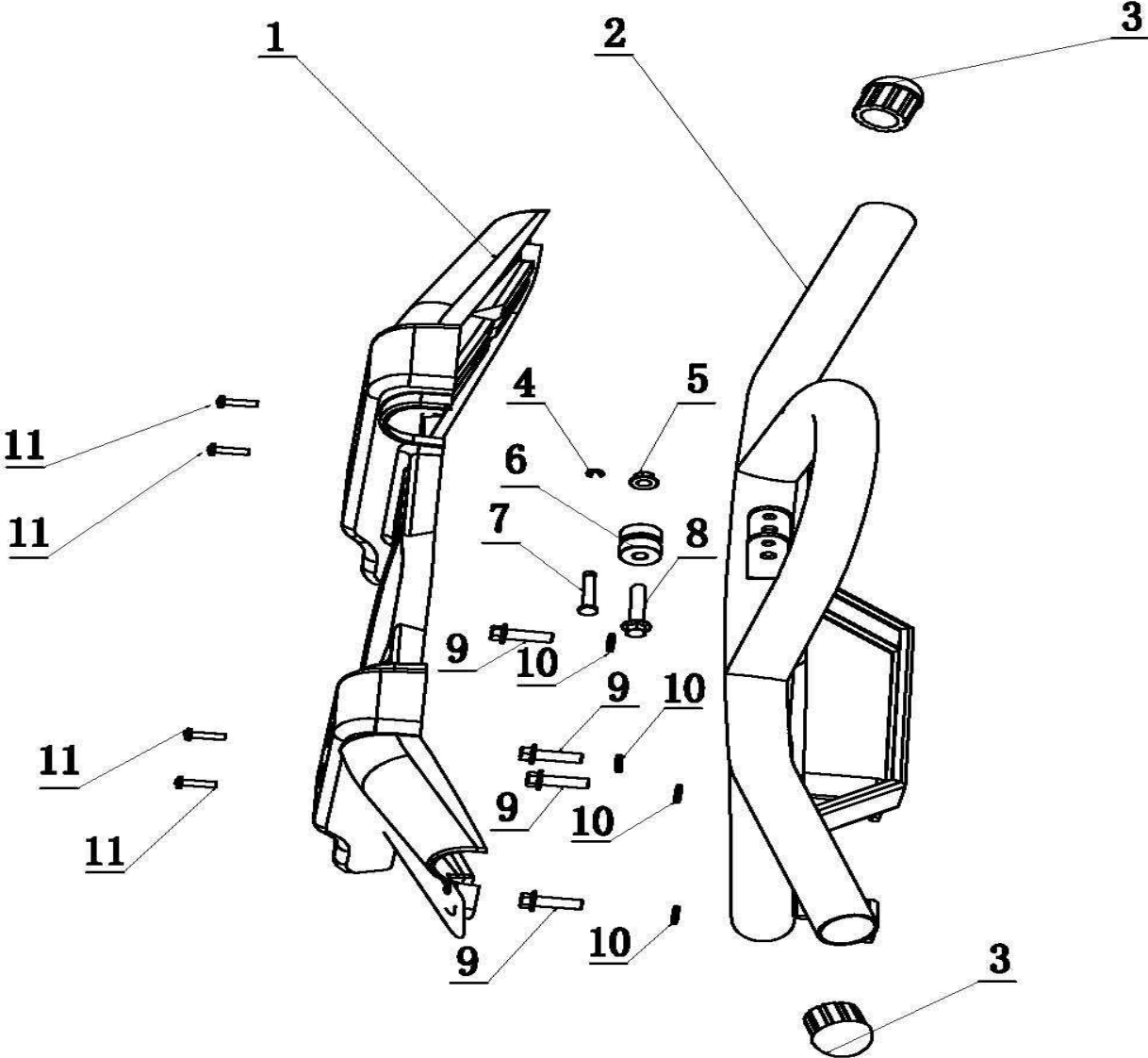
F13 REAR WHEEL ASSY



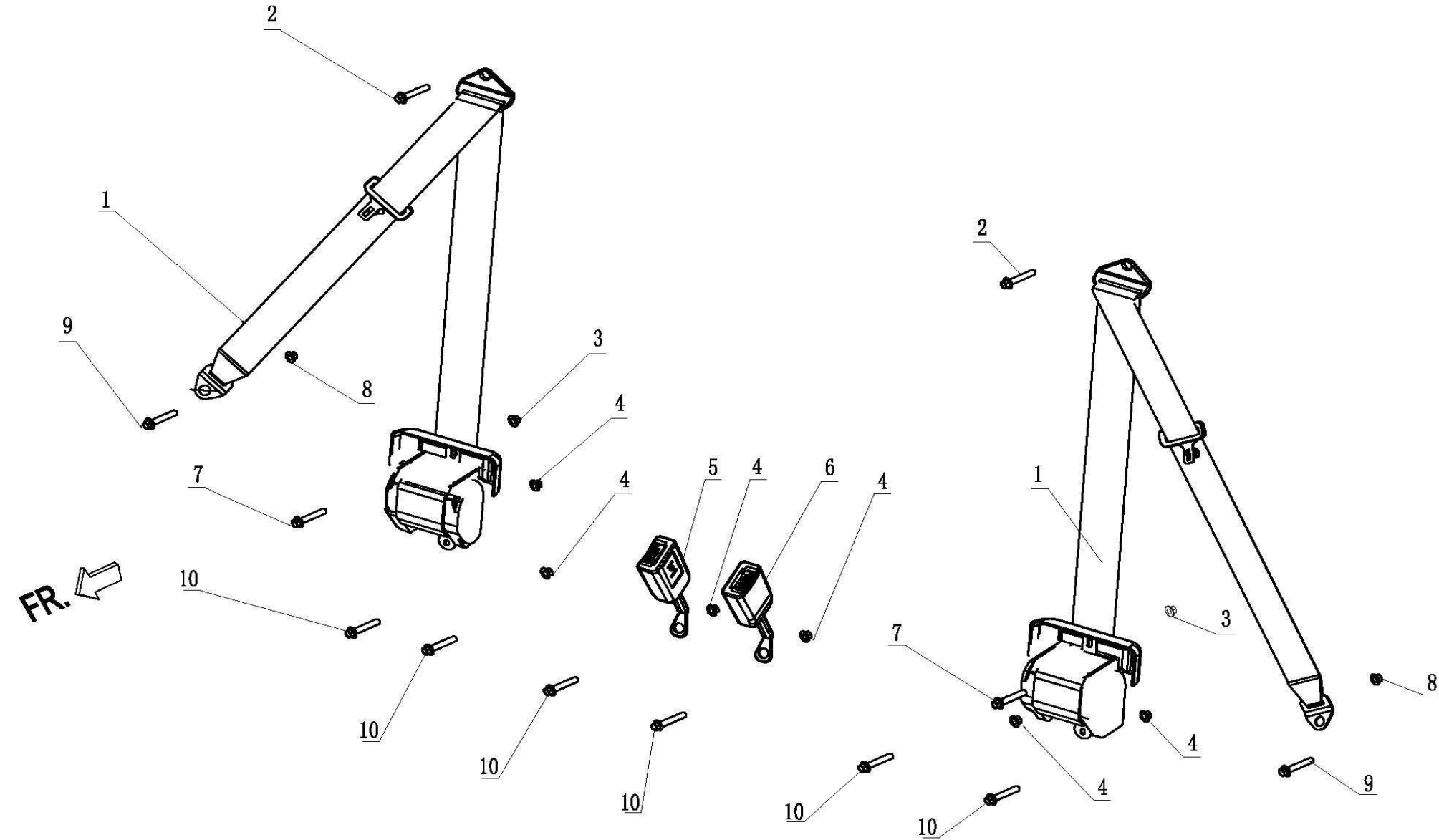
CODE		PART CODE	DESCRIPTION (EN)	Q'TY	PRIX € TTC
1		47391-5000	CAP,WHEEL CENTER	2	11
2		9422-120255	NUT,WHEEL(M12×1.25)	8	4
3		55190-5000	VALVE,RIM	2	7
4		54112-5000	RIM,RR.WHEEL	2	284
5		55112-5000	REAR TIRE □25×10 □12 □	2	199
6					0
7					0
8					
9					
10					
11					
12					
13					
14					
15					
16					
17					
18					
19					
20					
21					
22					
23					
24					



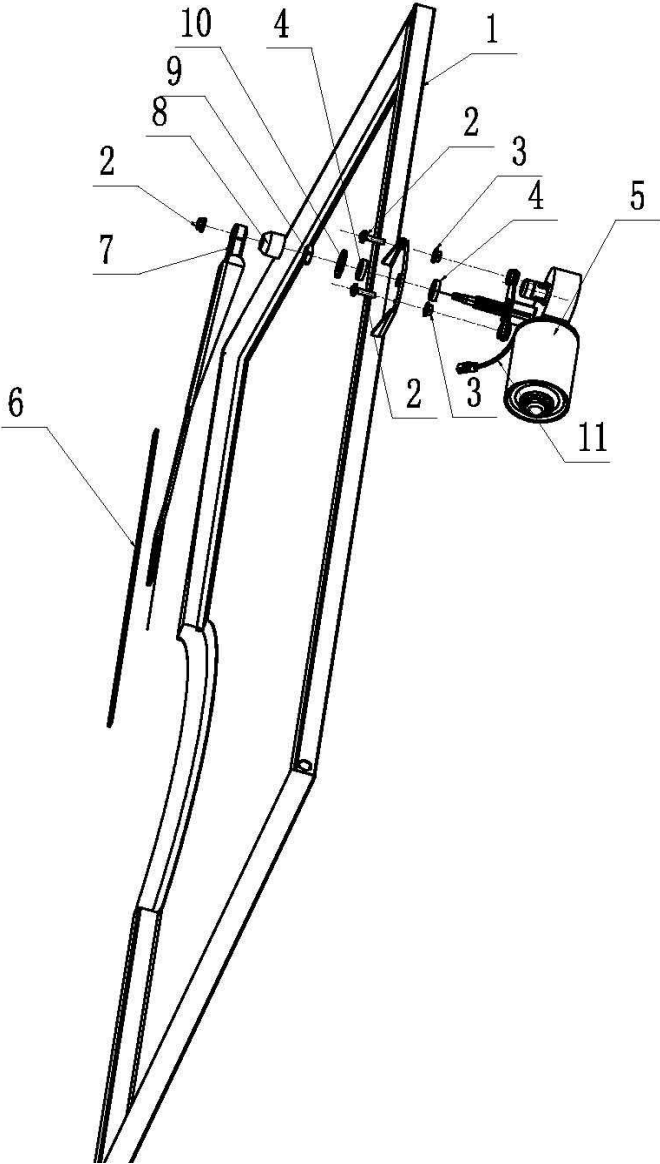
CODE		PART CODE	DESCRIPTION (EN)	Q'TY	PRIX € TTC
1		27203-5000	STEERING WHEEL	1	111
2		27201-5000	BEAING POLE	1	157
3		27223-5000	DUSTPROOF COVER,BEAING POLE	1	23
4		GB/T 823 M6×12	SCREW(M6×12)	1	0
5		GB/T 6187.1 M8	LOCKING NUT(M8)	4	1
6		42231-3000	PLATE,BEAING POLE	1	31
7		GB/T 16674.1 M8×35	BOLT,FLANGE(M8×35)	4	2
8		27216-5000	DUSTPROOF COVER,REDIRECTOR	1	6
9		GB/T 5783 M8×25	BOLT(M8×25)	2	1
10		GB/T 93 8	SPRING WASHER(φ8)	2	0
11		27212-3000	GIMBAL	1	97
12		GB/T 5786 M10×1.25×30	BOLT(M10×1.25×30)	4	3
13		GB/T 93 10	SPRING WASHER(φ10)	4	0
14		GB/T 97.1 10	WASHER(φ10)	4	0
15		27221-5000	REDIRECTOR,PIPE	2	14
16		27222-5000	REDIRECTOR,PIPE	1	23
17		GB/T 91 3.5×16	SPLIT PIN(φ3.5×16)	2	0
18		GB/T 9457 M12	REDIRECTOR,NUT(M12)	2	3
19		27202-3000	REDIRECTOR	1	191
20		27224-5000	SWITCH□HORN	1	7
21		GB/T 70 M5×16	INNER HEX SCREW□M5×16□	6	1
22					
23					
24					



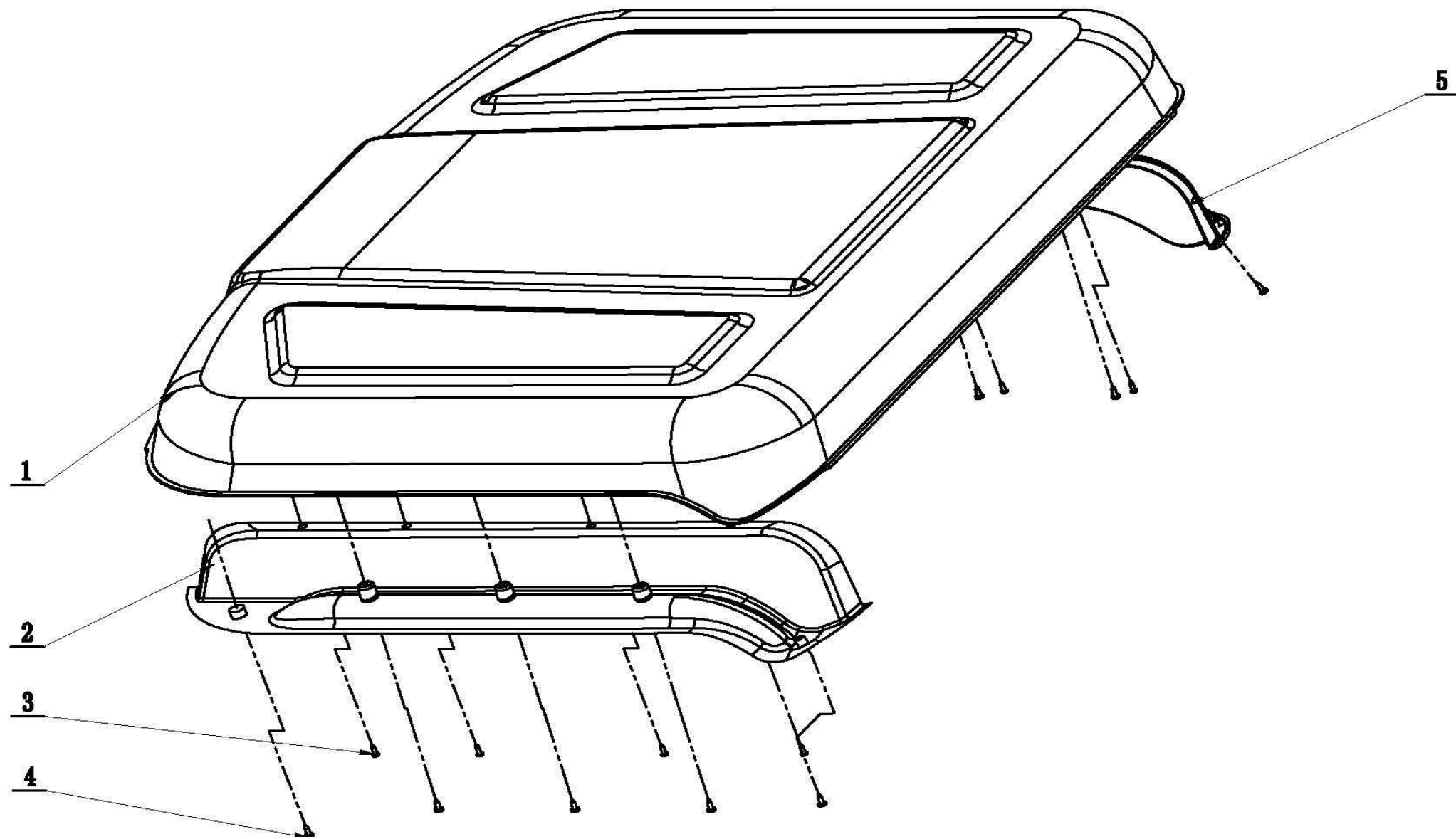
CODE		PART CODE	DESCRIPTION □ EN □	Q'TY	PRIX € TTC
1		47351 □ 5000	BUMPER COVER	1	61
2		84210 □ 5000	BUMPER	1	218
3		94221 □ 5000	PUBBER COVER,BUMPER	2	11
4		GB/T 896 6	SPRING WASHER(6)	1	1
5		GB/T 6187.2 M10×1.25	LOCKING NUT(M10×1.25)	1	1
6		84221-5000	PULLEY SLED	1	27
7		84222-5000	PIN	1	11
8		GB/T 16674.1 M10×1.25×55	BOLT,FLANGE(M10×1.25×55)	1	4
9		GB/T 16674.1 M10×1.25×25	BOLT,FLANGE(M10×1.25×25)	4	2
10		GB/T 93 10	SPRING WASHER(φ10)	4	0
11		GB/T 818 M6×15	SCREW(M6×15)	4	0
12					
13					
14					
15					
16					
17					
18					
19					
20					
21					
22					
23					
24					



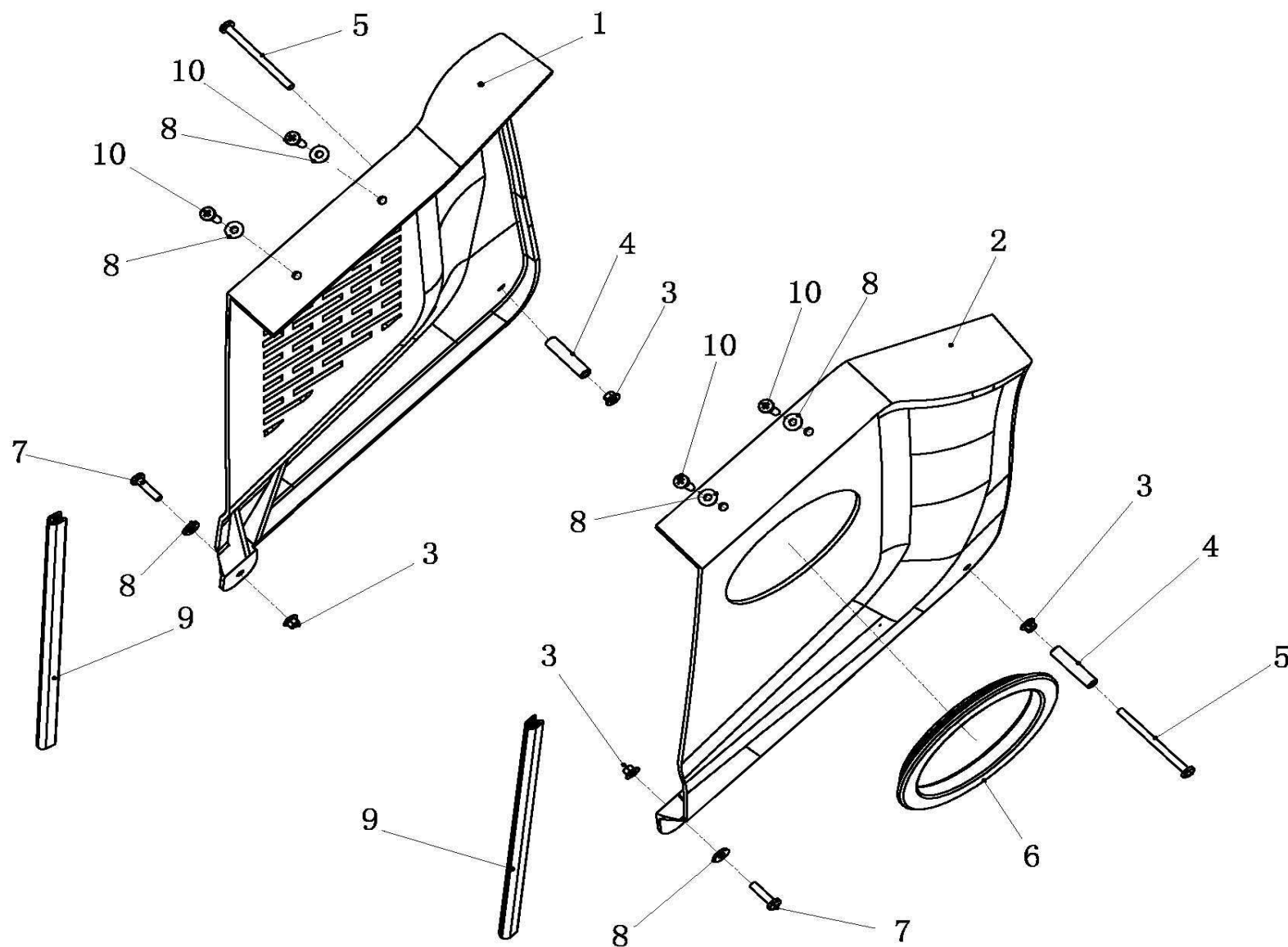
CODE		PART CODE	DESCRIPTION (EN)	Q'TY	PRIX € TTC
1		49920-5000	SAFETY BELT	2	71
2		GB/T 70 M8×30	INNER HEX SCREW(M8×30)	2	2
3		GB/T 6187.1 M8	NUT FLANGE(M8)	2	1
4		GB/T 6187.1 M10	NUT FLANGE(M10)	4	1
5		49940-5000	R.CUSHION	1	62
6		49930-5000	L.CUSHION	1	62
7		GB/T 70.2 M8×25	INNER HEX SCREW(M8×25)	2	2
8		GB/T 6187.1 M12	NUT FLANGE(M12)	2	3
9		GB/T 70.2 M12×30	INNER HEX SCREW(M12×30)	2	10
10		GB/T 70.2 M10×55	INNER HEX SCREW(M10×55)	6	8
11					
12					
13					
14					
15					
16					
17					
18					
19					
20					
21					
22					
23					
24					



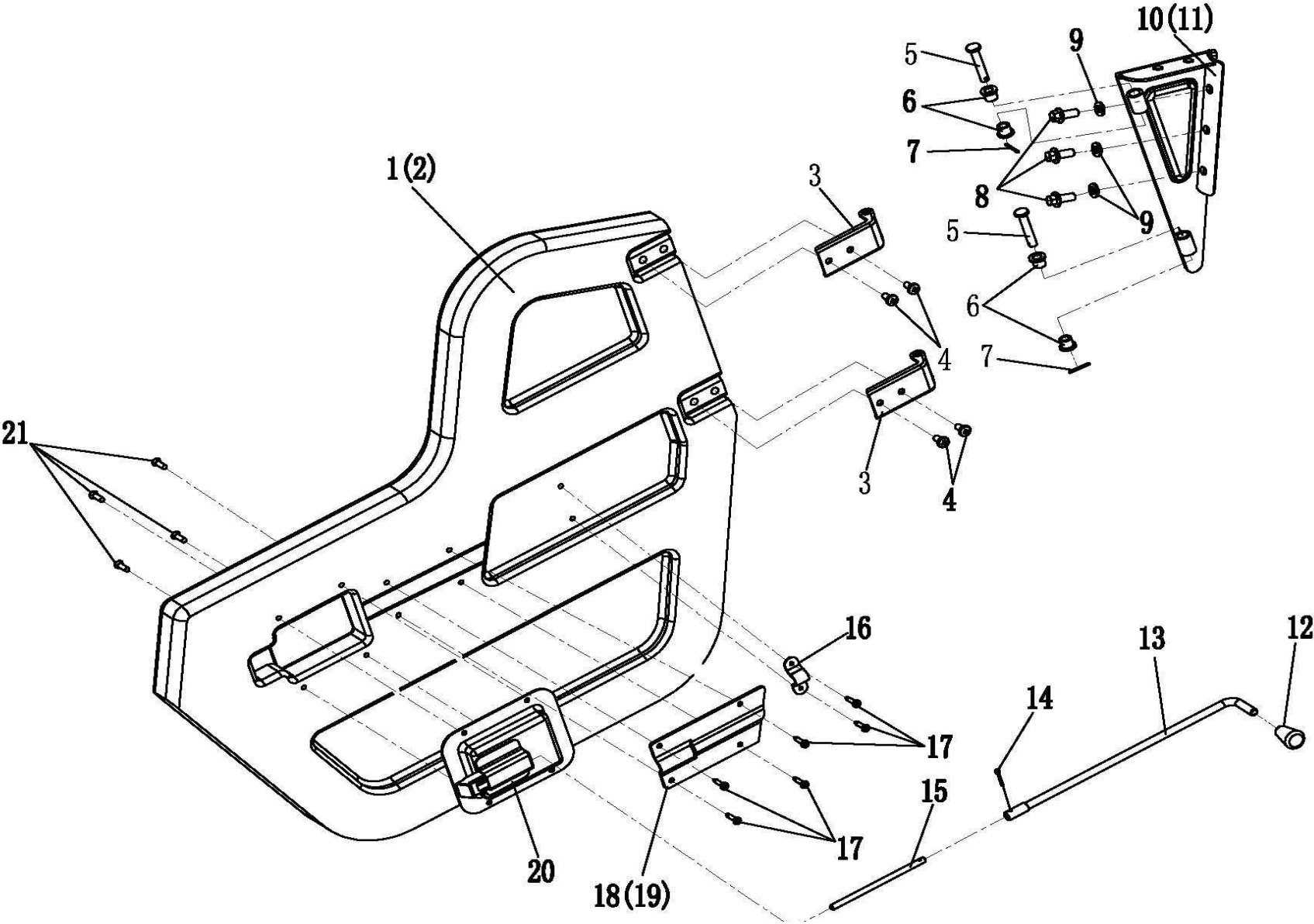
CODE		PART CODE	DESCRIPTION □ EN □	Q'TY	PRIX € TTC
1		49100 □ 5002	WINDSHIELD	1	174
2		GB/T 16674.1 M6×60	BOLT □ FLANGE(M6×60)	2	1
3		GB/T 6187.1 M6	LOCKING NUT(M6)	3	0
4		9015 □ 060160	RUBBER WASHER	2	1
5		38910 □ 5000	WIPER	1	139
6		38920 □ 5000	WIPER BLADE	1	19
7		38930 □ 5000	WIPER ARM	1	19
8		38991 □ 5000	DUST COVER,RUBBER	1	6
9		GB/T 6174 M12	NUT(M12)	1	2
10		GB/T 97.1 12	WASHER (Φ12)	2	0
11		38992-5000	CONNETED □ LINE	1	54
12					
13					
14					
15					
16					
17					
18					
19					
20					
21					
22					
23					
24					



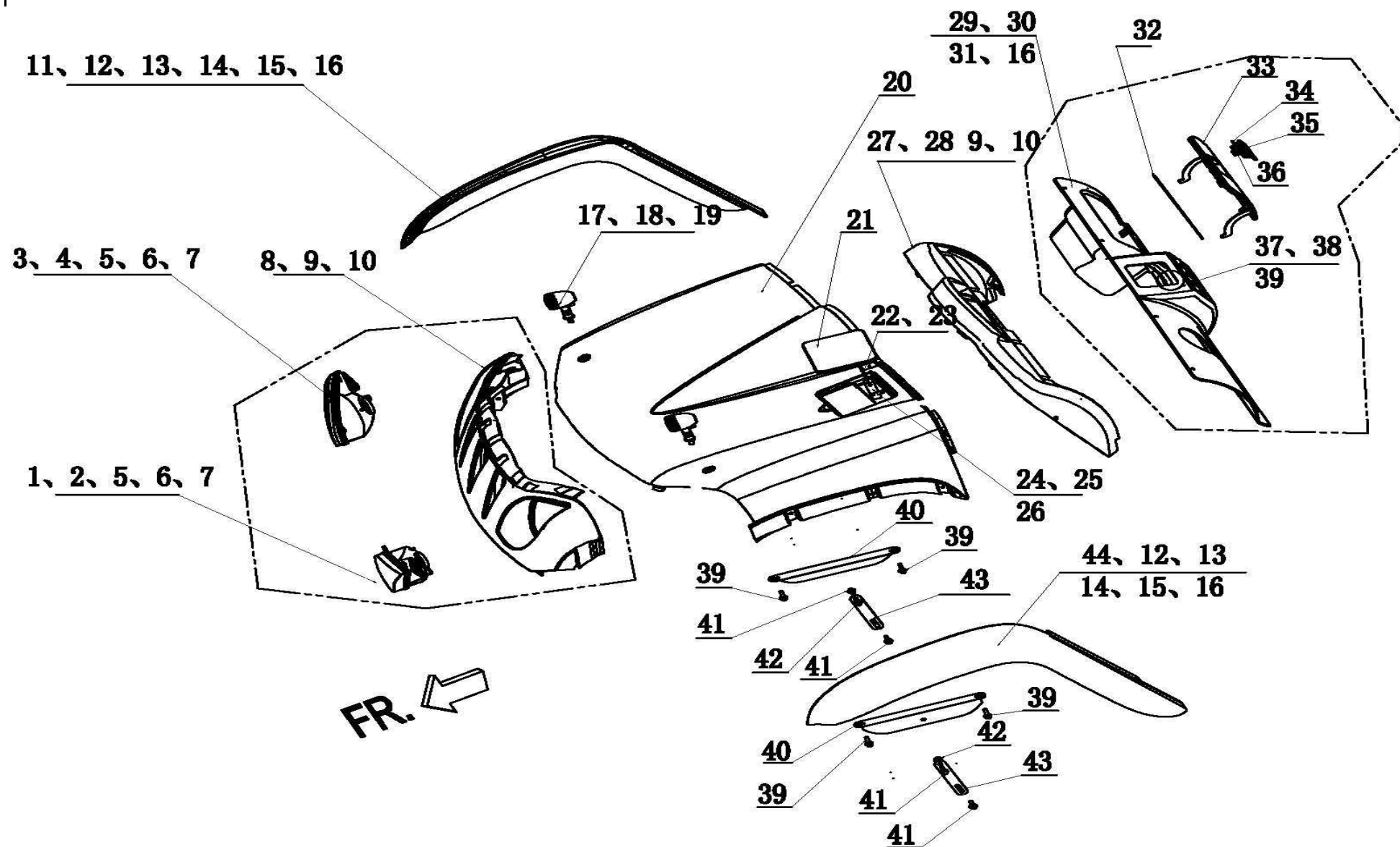
CODE		PART CODE	DESCRIPTION □ EN □	Q'TY	PRIX € TTC
1		47341-5000	CEILING	1	360
2		47342-5000	L.CONNETED,CEILING	1	43
3		GB/T 845 ST4.2×10	SCREW,TAP	8	0
4		GB/T 845 ST4.8×16	SCREW,TAP	10	0
5		47343-5000	R.CONNETED,CEILING	1	43
6					
7					
8					
9					
10					
11					
12					
13					
14					
15					
16					
17					
18					
19					
20					
21					
22					
23					
24					



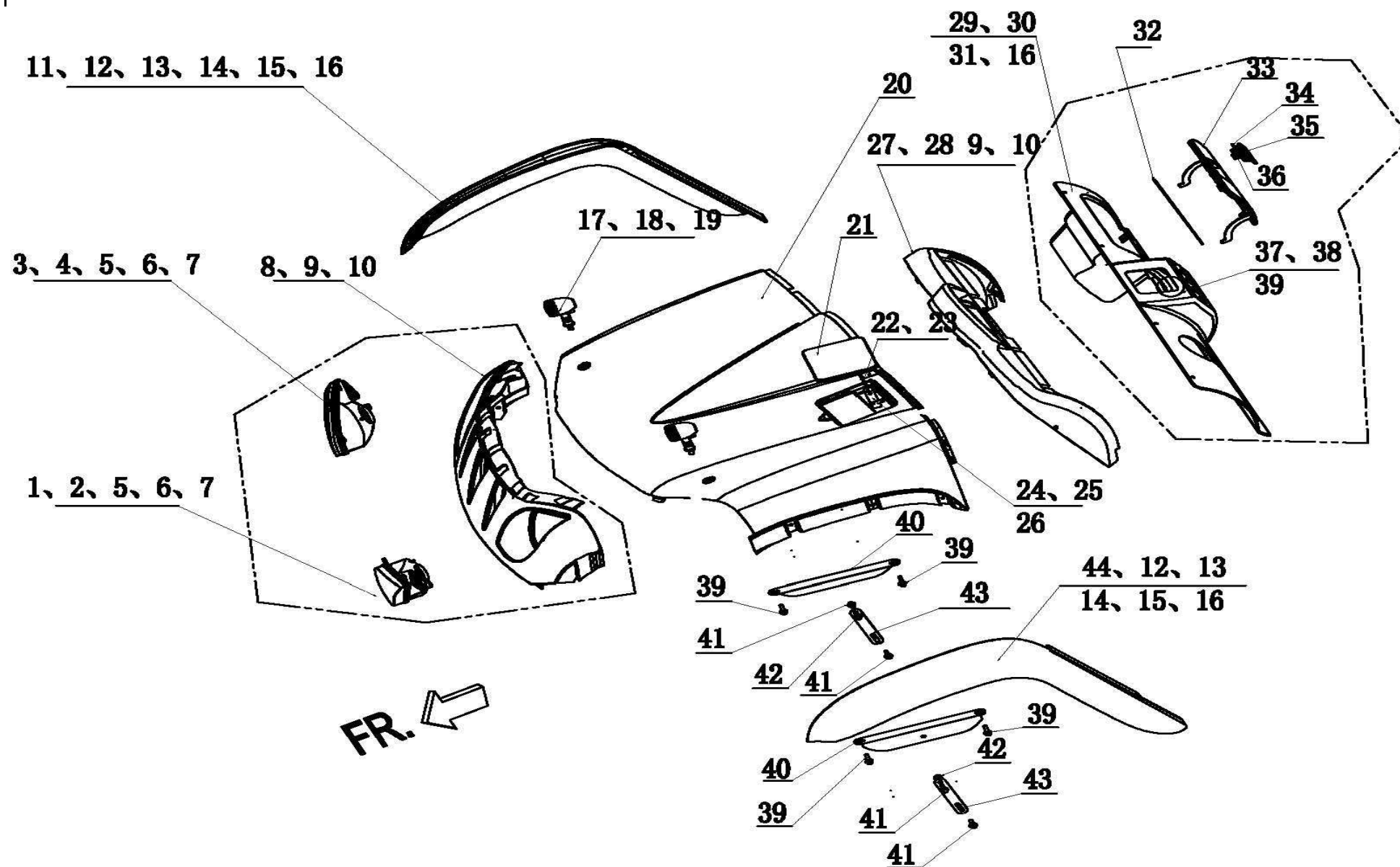
CODE		PART CODE	DESCRIPTION □ EN □	Q'TY	PRIX € TTC
1		47321 □ 5000	RR.R SIDE BOARD	1	52
2		47311 □ 5000	RR.L SIDE BOARD	1	52
3		GB/T 6177.1 M6	LOCKING NUT (M6)	4	0
4		41954 □ 5000	CENTER SPACER □ SIDE BOARD	2	9
5		GB/T 818 M6×60	SCREW □ M6×60 □	2	1
6		47331 □ 5000	LEATHER CASE,OIL FILLER	1	22
7		GB/T 818 M6×25	SCREW □ M6×25 □	2	0
8		9015 □ 060160	CUSHION RUBBER	6	1
9		47332 □ 5000	ARTICLE CARD	2	27
10		GB/T 818 M6×20	SCREW □ M6×20 □	4	0
11					
12					
13					
14					
15					
16					
17					
18					
19					
20					
21					
22					
23					
24					



CODE		PART CODE	DESCRIPTION EN	Q'TY	PRIX € TTC
1		49510 5002	HALF DOOR L	1	139
2		49610 5002	HALF DOOR R	1	139
3		49533 5002	HALF DOOR,ARM	4	31
4		GB/T 818 M6x12	SCREW(M6x12)	8	1
5		GB/T 882 8x45	PIN(8x45)	4	3
6		49531 5002	SPACER,ARM	8	6
7		GB/T 91 Φ3.2x12	SPLIT PIN(Φ3.2x12)	4	0
8		GB/T 16674.1 M8x22	BOLT,FLANGE(M8x22)	6	1
9		GB/T 93 8	SPRING WASHER(Φ8)	6	0
10		49520 5002	L,FIXED BLOCK,HALF DOOR	1	61
11		49560 5002	R,FIXED BLOCK,HALF DOOR	1	61
12		49595 5002	TIE ROD JOINT,HALF DOOR LOCK	2	5
13		49593 5002	TIE ROD A,HALF DOOR LOCK	2	15
14		GB/T 91 2.5x12	SPLIT PIN(Φ2.5x12)	2	0
15		49594 5002	TIE ROD B,HALF DOOR LOCK	2	3
16		49597 5002	FASTNESS BUCKLE, DRAG HOOK	2	5
17		GB/T 846 ST3.5x19	SCREW(ST3.5x19)	12	0
18		49596 5002	L.HALF DOOR,LOCKING COVER	1	3
19		49696 5002	R.HALF DOOR,LOCKING COVER	1	3
20		49540 5002	HALF DOOR,LOCKING GROUPWARE	2	34
21		GB/T 819.1 M5x18	SCREW(M5x18)	8	0
22					
23					
24					

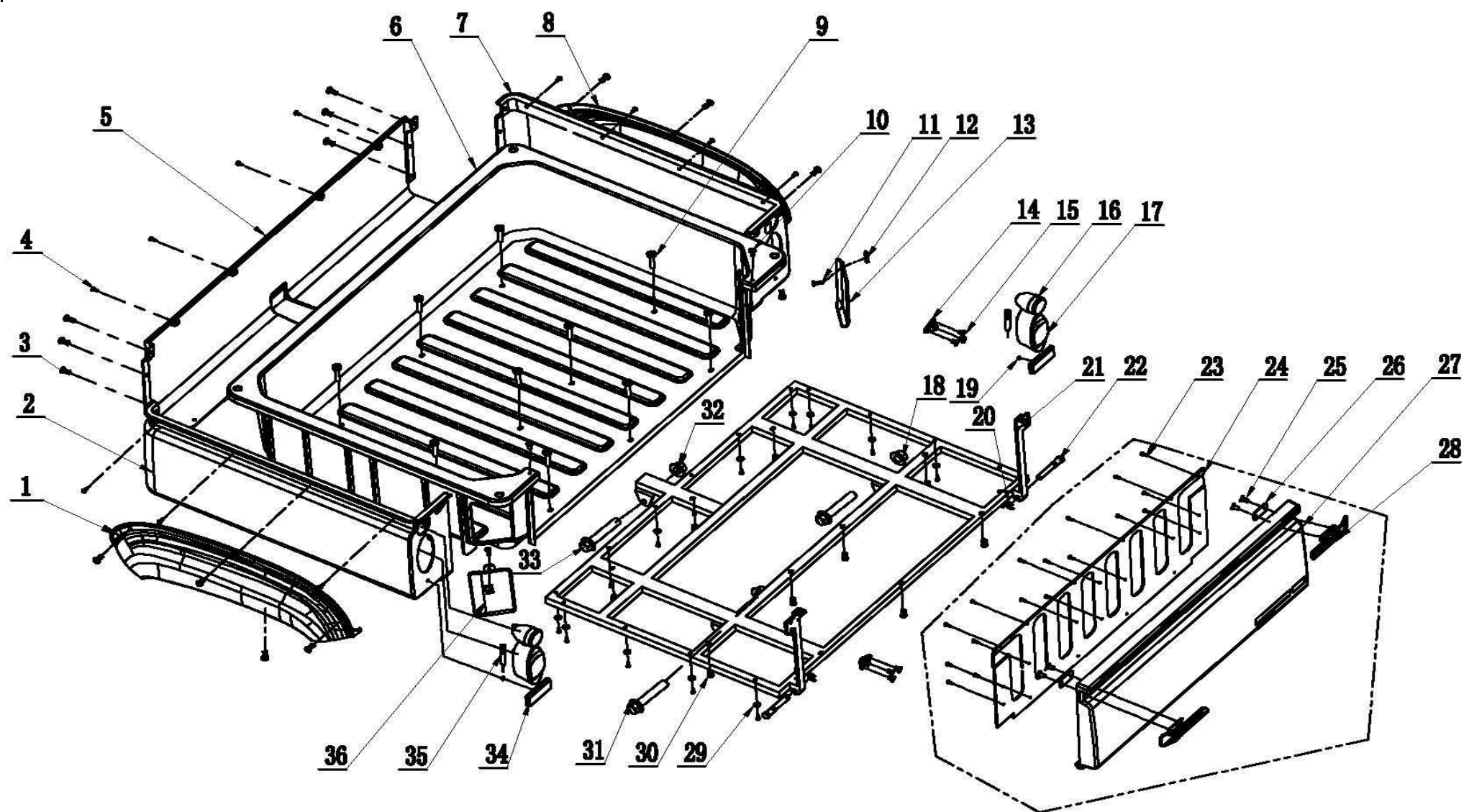


CODE		PART CODE	DESCRIPTION □ EN □	Q'TY	PRIX € TTC
1		35101 □ 5002	HEAD L.LIGHT	1	144
2		35101 □ 5000	HEAD L.LIGHT	1	69
3		35102 □ 5002	HEAD R.LIGHT	1	144
4		35102 □ 5000	HEAD R.LIGHT	1	69
5		GB/T 845 ST4.8×30	SCREW,TAP(ST4.8×30)	6	0
6		GB/T 6170 M5	NUT(M5)	6	0
7		GB/T 5287 5	WASHER	6	0
8		47691 □ 5002	BRACKET OF HEAD LIGHT	1	123
9		GB/T 845 ST4.8×16	SCREW,TAP(ST4.8×16)	8	0
10		GB/T 5287 5	WASHER	8	0
11		47693 □ 5000	FR.R.SPLASH BOARD	1	42
12		GB/T 845 ST4.2×16	SCREW,TAP(ST4.2×16)	2	0
13		GB/T 820 M6×12	SCREW(M6×12)	10	0
14		GB/T 96 6	WASHER	12	0
15		GB/T 823 M6×16	SCREW(M6×16)	2	0
16		GB/T 6187.1 M6	NUT FLANGE M6	6	1
17		35610 □ 5000	TURNING LIGHT(EEC)	2	42
18		35610 □ 5001	TURNING LIGHT(EPA)	2	27
19		GB/T 6170 M10	NUT(M10)	2	0
20		47611 □ 5000	FR.EMGINE COVER	1	296
21		47620 □ 5000	FILLER COVER	1	15
22		98391 □ 250000	FILLER COVER SPRING A	1	6
23		98392 □ 250000	FILLER COVER SPRING B	1	6
24		41684 □ 5000	BASE □ SMALL HOOD	1	3

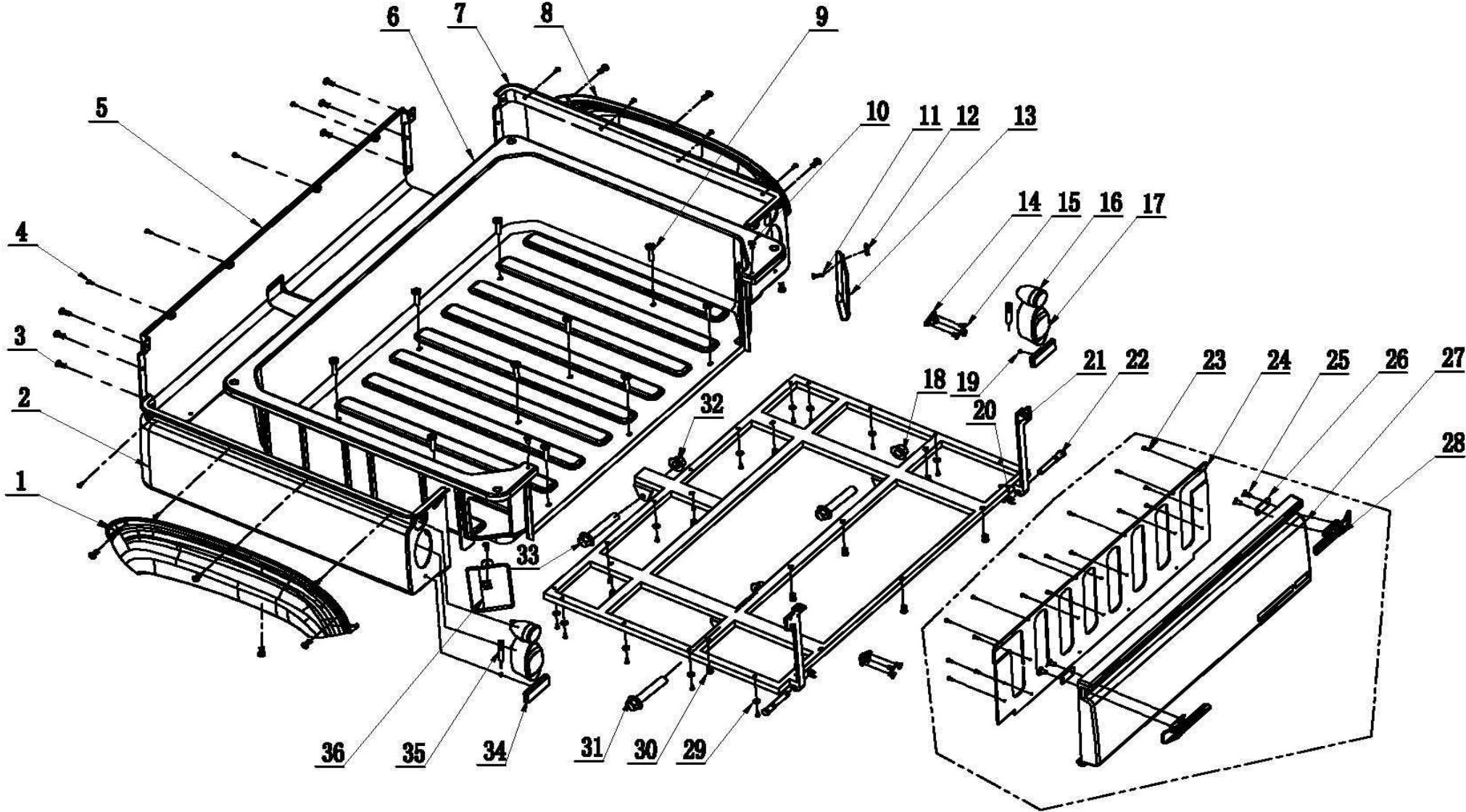


CODE		PART CODE	DESCRIPTION EN	Q'TY	PRIX € TTC
25		GB/T 818 M4x16	SCREW(M4x16)	2	0
26		GB/T 6170 M4	NUT M4	2	0
27		47651 5000	METER HOLDER	1	94
28		9305-060200	EXPANSION SCREW	4	2
29		47660 5000	METER,PANEL	1	98
30		GB/T 818 M6x16	SCREW(M6x16)	8	0
31		9015 060160	METER,PANEL	8	1
32		47664 5000	PIN SHAFT,BOX DOOR	1	9
33		47661 5000	BOX DOOR,METER PANEL	1	66
34		47665 5000	PIN SHAFT HANDLE	1	1
35		47662 5000	DEBRIS LID HANDLE	1	9
36		9811 250357	SPRING	1	3
37		41681 5000	L.METER,PANEL	1	19
38		41682 5000	R.METER,PANEL	1	19
39		GB/T 16674.1 M8x12	BOLT FLANG M8x12	4	1
40		42272 5000	HOLDER ENGINE COVER	2	19
41		GB/T 16674.1 M8x16	BOLT FLANG M8x16	4	1
42		GB/T 6187.1 M8	LOCK NUT M8	4	1
43		42271 5000	PANEL,ENGINE COVER	2	21
44		47692 5000	FR.L.SPLASH BOARD	1	42
45					
46					
47					
48					

F22 □□□□ CARGO BOX ASSY

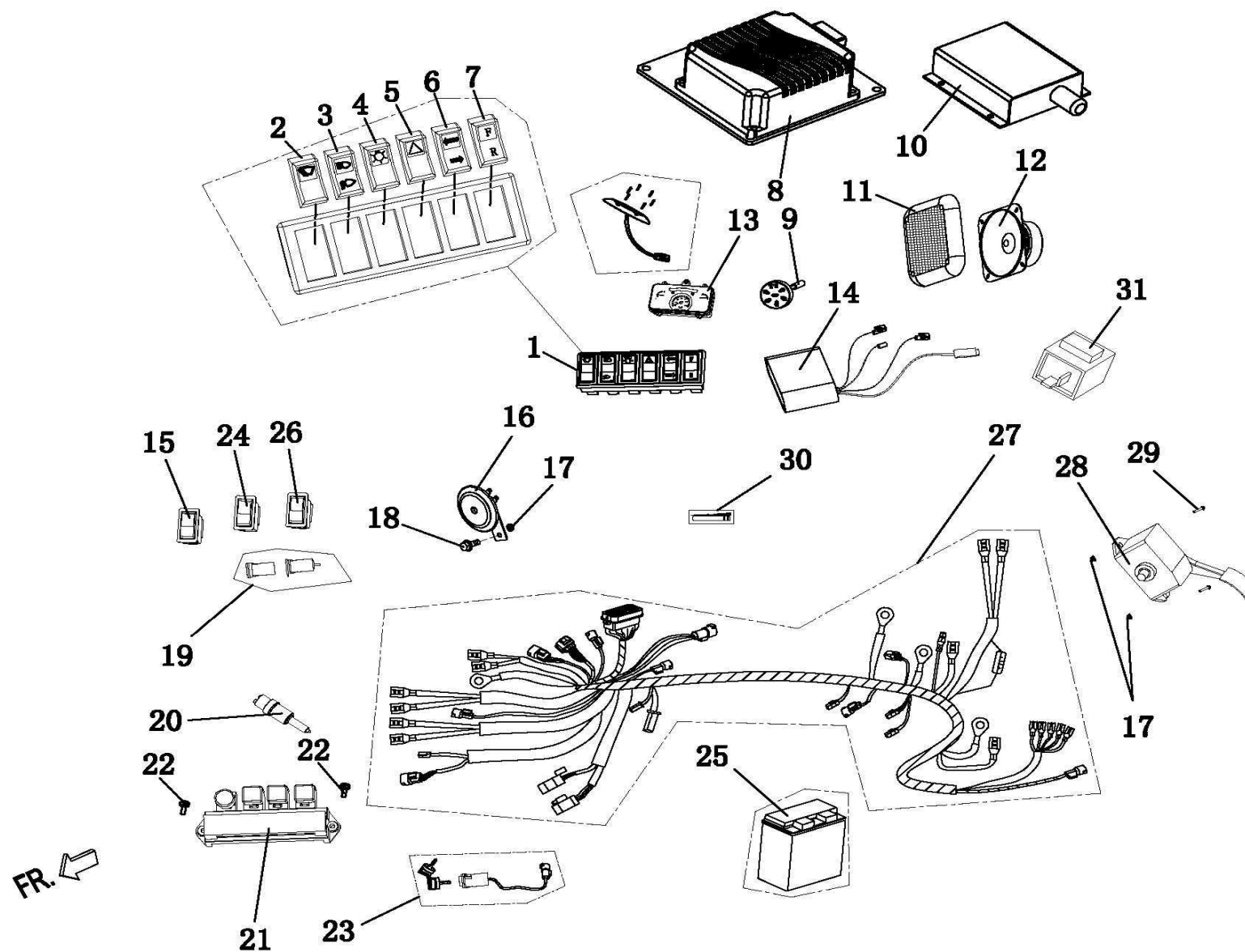


CODE		PART CODE	DESCRIPTION □ EN □	Q'TY	PRIX € TTC
1		46616 □ 5000	L.SPLASH BOARD	1	42
2		46613 □ 5000	CARGO BOX L.PLATE	1	59
3		9305-060200	EXPANSION SCREW(M6×20)	14	2
4		GB/T 845 ST4.8×15	SCREW,TAP(ST4.8×15)	12	0
5		46612 □ 5000	CARGO BOX FR.PLATE	1	54
6		46611 □ 5000	CARGO BOX	1	598
7		46614 □ 5000	CARGO BOX R.PLATE	1	59
8		46617 □ 5000	R.SPLASH BOARD	1	42
9		GB/T 818 M8×45	SCREW(M8×45)	10	1
10		GB/T 819.1 M6×12	SCREW(M6×12)	2	0
11		GB/T 818 M6×20	SCREW(M6×20)	2	0
12		9401-060003	NUT,CLIP(M6)	2	1
13		46618 □ 5000	MAINTAIN COVER □ TAILLIGHT □ R □	1	39
14		46634 □ 5000	BUCKLE □ BOARD	2	11
15		GB/T 819.1 M6×12	SCREW(M6×12)	6	0
16		35620 □ 5000	RR.TURNING LIGHT	2	42
17		35710 □ 5000	TAIL LIGHT	2	51
18		GB/T 6187.2 M12×1.25	LOCKING NUT(M12×1.25)	2	3
19		GB/T 6187.1 M5	LOCKING NUT(M5)	2	0
20		GB/T 896 12	SPRING WASHER(12)	2	1
21		46601 □ 5000	CHASSIS □ CARGO BOX	1	272
22		46631 □ 5000	CARGO BOX DOOR PIN	2	15
23		GB/T 845 ST4.2×16	SCREW,TAP(ST4.2×16)	36	0
24		46621 □ 5000	FROM PLATE □ CARGO BOX	1	56

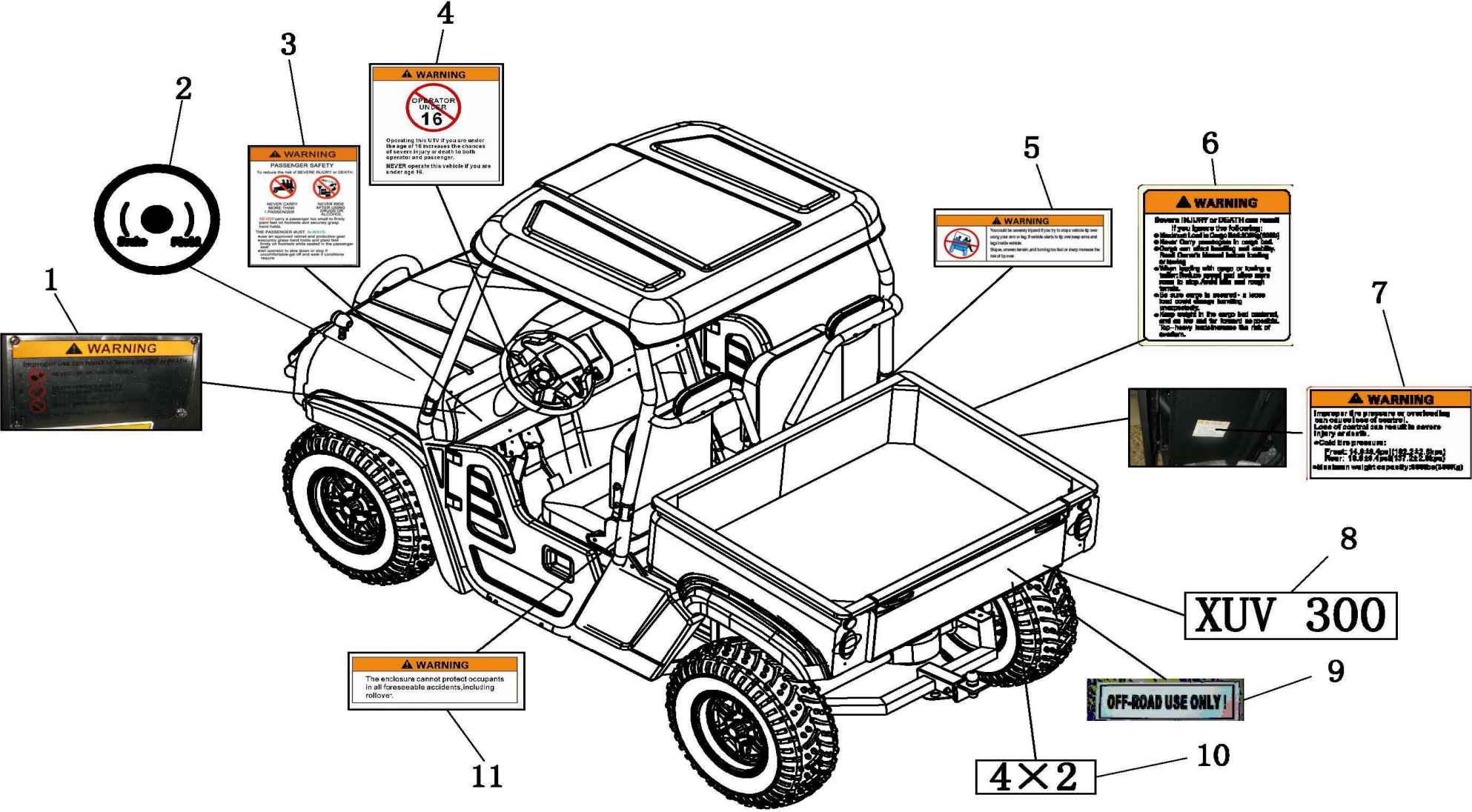


CODE		PART CODE	DESCRIPTION □ EN □	Q'TY	PRIX € TTC
25		GB/T 819.1 M6×16	SCREW(M6×16)	4	0
26		46633 □ 5000	FIXED PLATE □ BOARD BUCKLE	2	7
27		46622 □ 5000	REAR PLATE □ CARGO BOX	1	104
28		46632 □ 5000	BUCKLE □ PLATE	2	11
29		GB/T 96 5	WASHER	14	0
30		GB/T 17880.1 M8	NUT □ RIVET □ M8 □	10	4
31		GB/T 16674.2 M10×1.25×65	BOLT,FLANGE(M10×1.25×65)	2	5
32		GB/T 6187.1 M10	LOCKING NUT(M10)	2	1
33		GB/T 16674.1 M10×55	BOLT,FLANGE M10×55	2	4
34		35991 □ 5000	RR.REFLECTER	2	7
35		35711 □ 5000	TAIL LIGHT CONNECTED	2	9
36		46615 □ 5000	MAINTAIN COVER □ TAILLIGHT □ L □	1	39
37					0
38					0
39					
40					
41					
42					
43					
44					
45					
46					
47					
48					

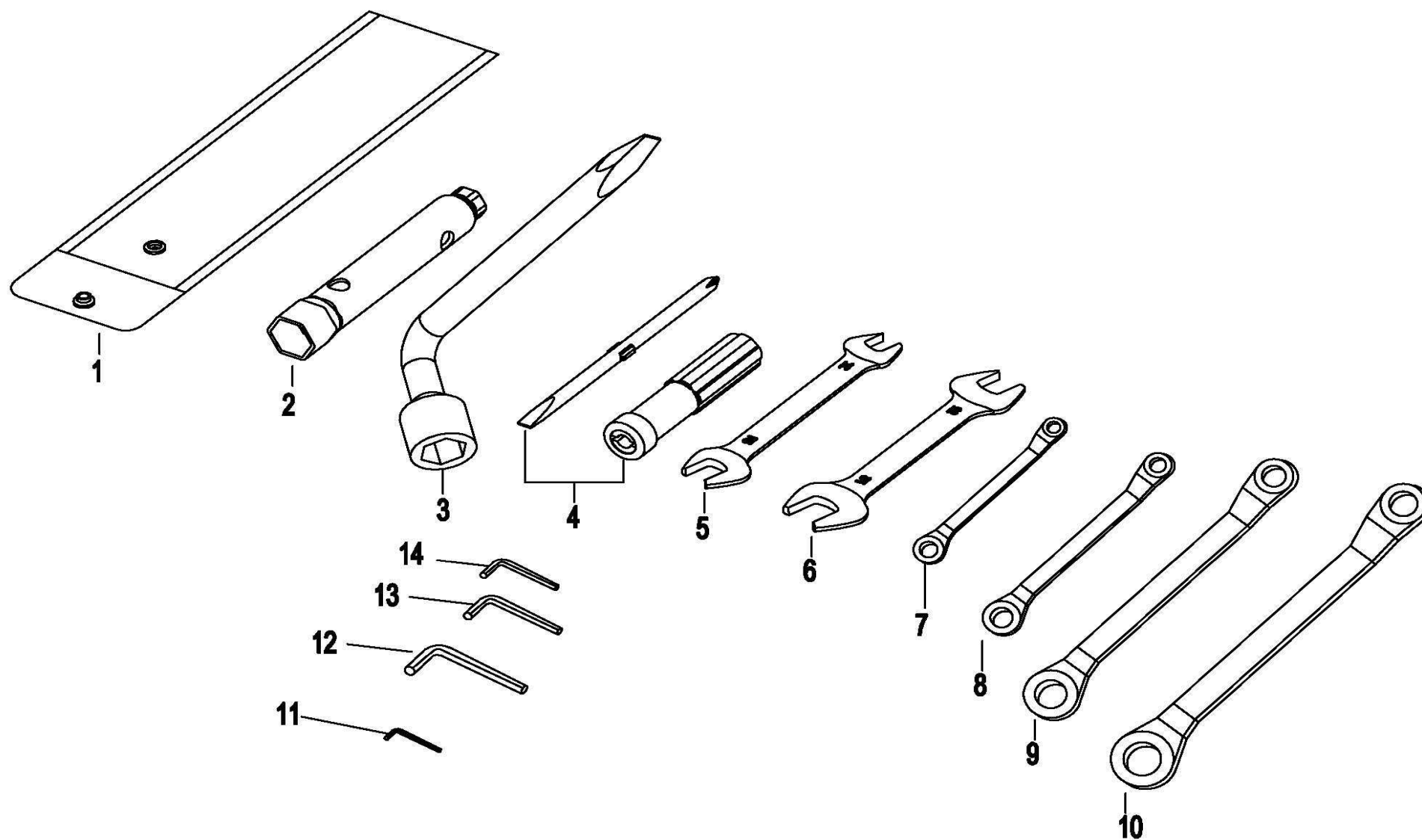
CODE		PART CODE	DESCRIPTION □ EN □	Q'TY	PRIX € TTC
1		37300-3090	COMBINED SWITCH ASSY	1	182
2		37311-5000	WINDSHIELD WIPER SWITCH	1	37
3		37312-5000	HIGH BEAM//LOW BEAM,SWITCH	1	37
4		37313-5000	LIGHT.SWITCH	1	37
5		37314-5000	EMERGENCY LIGHT.SWITC	1	11
6		37315-5000	TURNING.SWITC	1	37
7		37316-3090		1	37
8		28110-3090		1	1589
9		39820-5000	MP3 SWITCH	1	28
10		28120-3090		1	450
11		39991-5000	MP3 HORN COVER	2	6
12		39991-5000	MP3 HORN COVER	2	6
13		34000-3090	METER	1	209
14		39810-5000	MP3 PLAYER	1	153
15		37340 □ 5000	POWER SUPPLY MAIN SWITCH □ WITH WIRE □	1	37
16		38500-5000	BUGLE	1	67
17		GB/T 6187.1 M8	LOCKING NUT(M8)	1	1
18		GB/T 16674.1 M8×15	BOLT □ FLANGE(M8×15)	1	1
19		39400-5000	CIGARETTE LIGHT	1	7
20		37701-5000	BRAKE LIGHT SWITCH	1	15
21		36710-3090	FUSE BOX ASSY	1	62
22		GB/T 16674.1 M6×20	BOLT □ FLANGE (M6×20)	2	0
23		37100-5000	IGNITION SWITCH	1	76
24		37330-5000	SWITCH OF WINCH	1	44



CODE		PART CODE	DESCRIPTION □ EN □	Q'TY	PRIX € TTC
25		33610-3090	BATTERY	8	598
26		37320-3090	SWITCH OF UPHOLD STICK	1	37
27		36600-3090	MAIN CABLE ASSY	1	556
28		28710-3090		1	219
29		GB/T 16674.1 M8x25	BOLT □ FLANGE(M8x25)	2	1
30		37400-3090		1	106
31		37313-3090		1	18
32				1	751
33					0
34					0
35					0
36					0
37					0
38					0
39					
40					
41					
42					
43					
44					
45					
46					
47					
48					



CODE		PART CODE	DESCRIPTION □ EN □	Q'TY	PRIX € TTC
1		68421-5000	ALUMINIUM BRAND,WARNING LABEL	1	10
2		68712-5000	LABEL,BLAKE FLUID	1	3
3		68415-5000	LABEL,SAFETY MESSAGES	1	10
4		68416 □ 5000	LABEL,AGE LIMITED	1	6
5		68417 □ 5000	WARNING LABEL(R)	1	11
6		68717 □ 5000	LABEL,TYRE PRESSURE 2	1	11
7		68719 □ 5000	LABEL,TYRE PRESSURE 1	1	11
8		68911-3000	NAMEPLATE	1	10
9		68412-5000	LABEL,OFF-ROAD	1	3
10		68912-3000	MARKS □ DRIVE FORMAT	1	10
11					
12					
13					
14					
15					
16					
17					
18					
19					
20					
21					
22					
23					
24					



CODE		PART CODE	DESCRIPTION (EN)	Q'TY	PRIX € TTC
1		86591-5010	BAG,TOOL	1	41
2		86511-5010	WRENCH,PLUG	1	0
3		86512-5000	WHEEL,PLUG	1	0
4		86561-5010	SCREWDRIVER	1	0
5		86531-5010	SPANNER□12-14□	1	0
6		86532-5010	SPANNER□13-15□	1	0
7		86544-5010	SPANNER□5.5-7□	1	0
8		86541-5010	SPANNER□8-10□	1	0
9		86542-5010	SPANNER□14-17□	1	0
10		86543-5010	SPANNER□17-19□	1	0
11		86554-5010	INNER HEX SPANNER□4mm□	1	0
12		86553-5010	INNER HEX SPANNER□8mm□	1	0
13		86552-5010	INNER HEX SPANNER□6mm□	1	0
14		86551-5010	INNER HEX SPANNER□5mm□	1	0
15					
16					
17					
18					
19					
20					
21					
22					
23					
24					