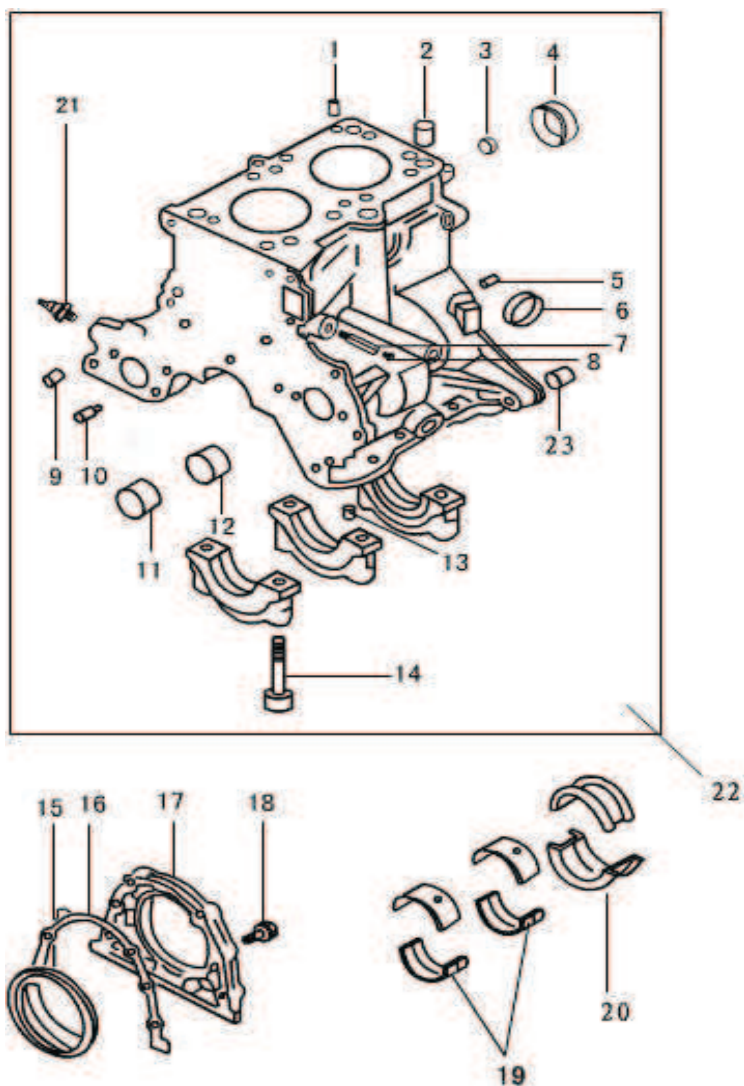


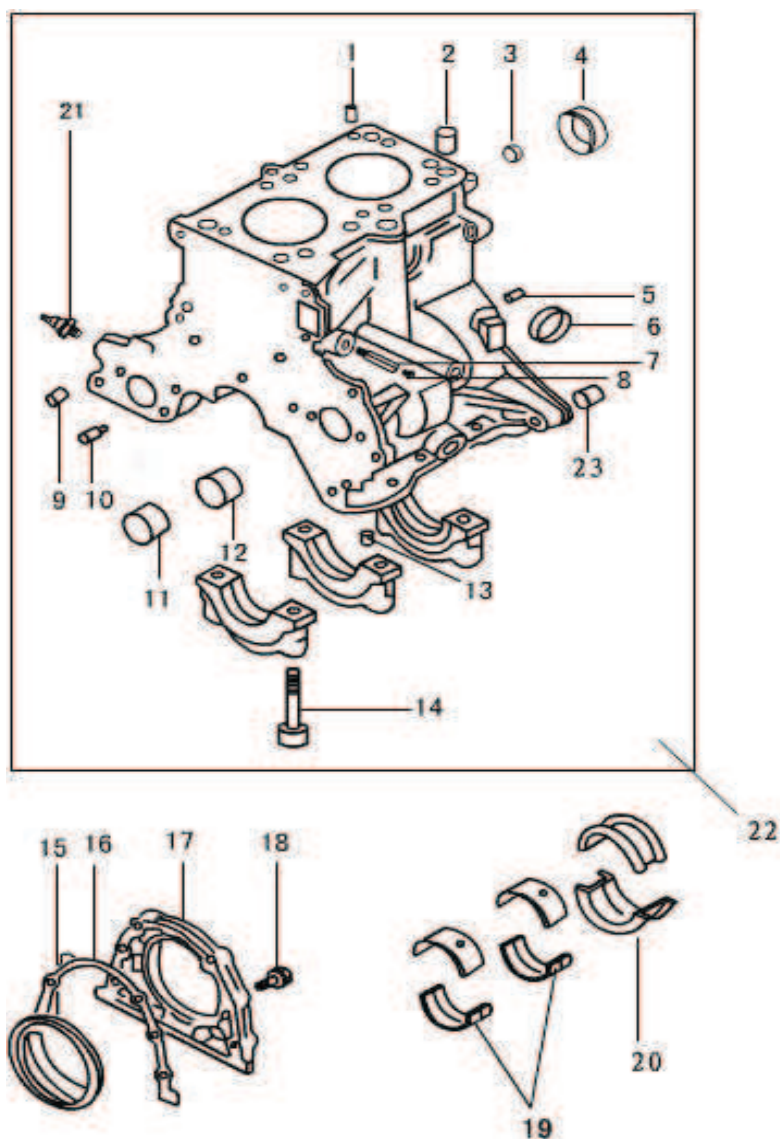
PARTS MANUAL

1 CYLINDER BLOCK PART



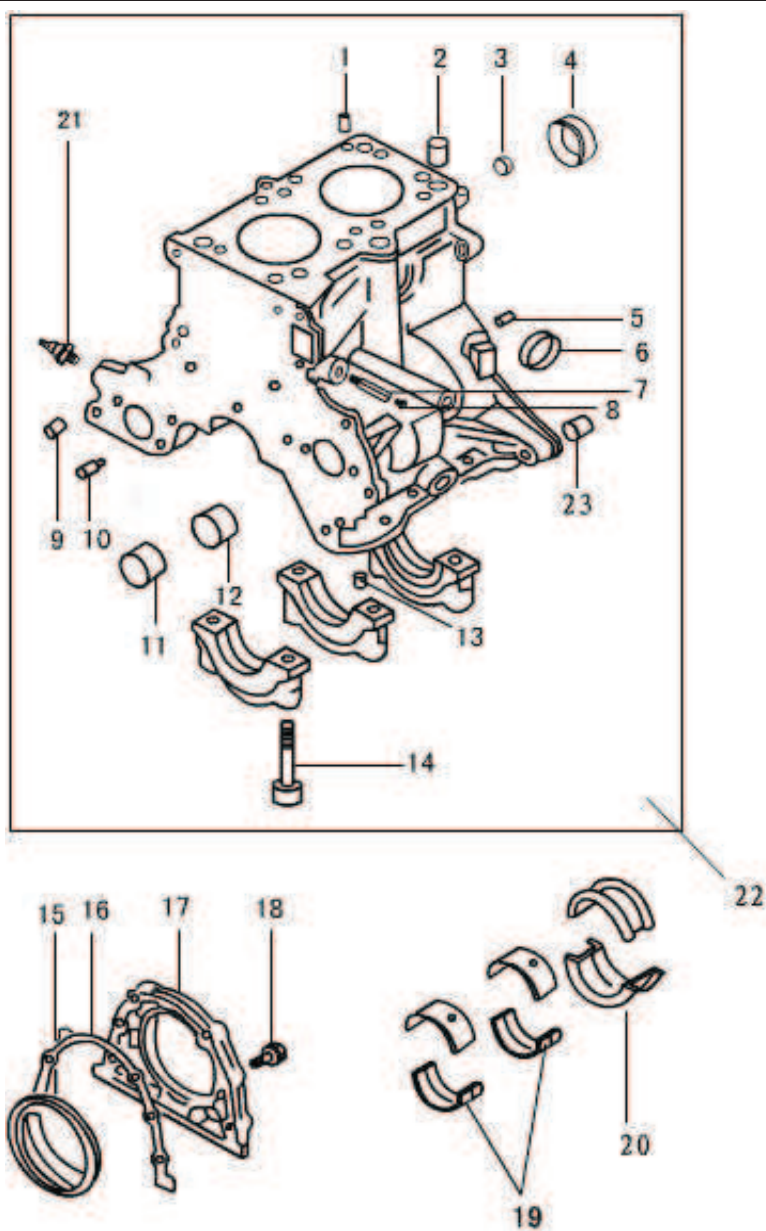
No.	Code name	Description	Qty
1	270Q—02009	oil feed plug	1
2	LJ462Q—1—1000028D	Cylinder head locating dowel	2
3	QTB55	Plug $\phi 10.5 \times 7$	1
4	QTB54	freeze plug $\phi 40$	1
5	GB/T119—1986	Pin $\phi 6 \times 18$	2
6	QTB542	freeze plug $\phi 30$	3

1 CYLINDER BLOCK PART



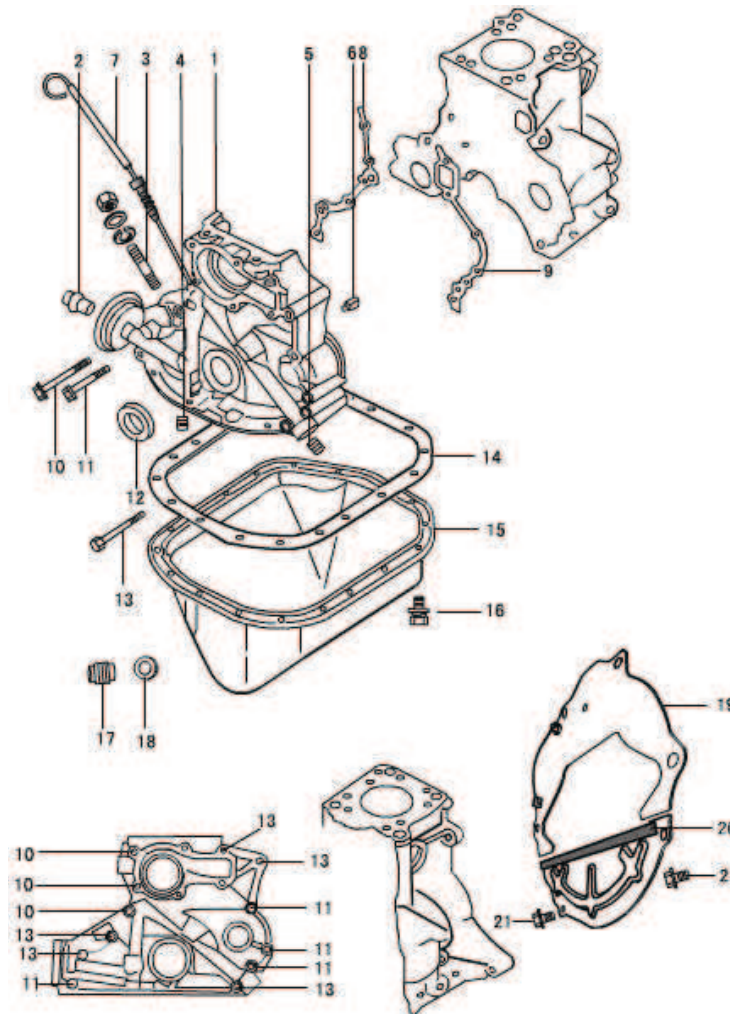
No.	Code name	Description	Qty
7	270Q—02013	Tie-in pipe of drive valve	1
8	QTB28	Hexagon-headed taper bolt NPT1/4	1
9	QTB42	Hollow-swage locating pin $\phi 11 \times 12$	2
10	270Q—02004	Jetting pipe	1
11	270Q—02003	Front bearing of balancing shaft	2
12	270Q—02011	Rear bearing of balancing shaft	2
13	QTB54	Calathiform plug 8×9	1
14	270Q—02102	Main bearing cap bolt	6
15	QTB53A	Crankshaft rear oil seal with unidirectional flow around FB60×78×7	1

1 CYLINDER BLOCK PART



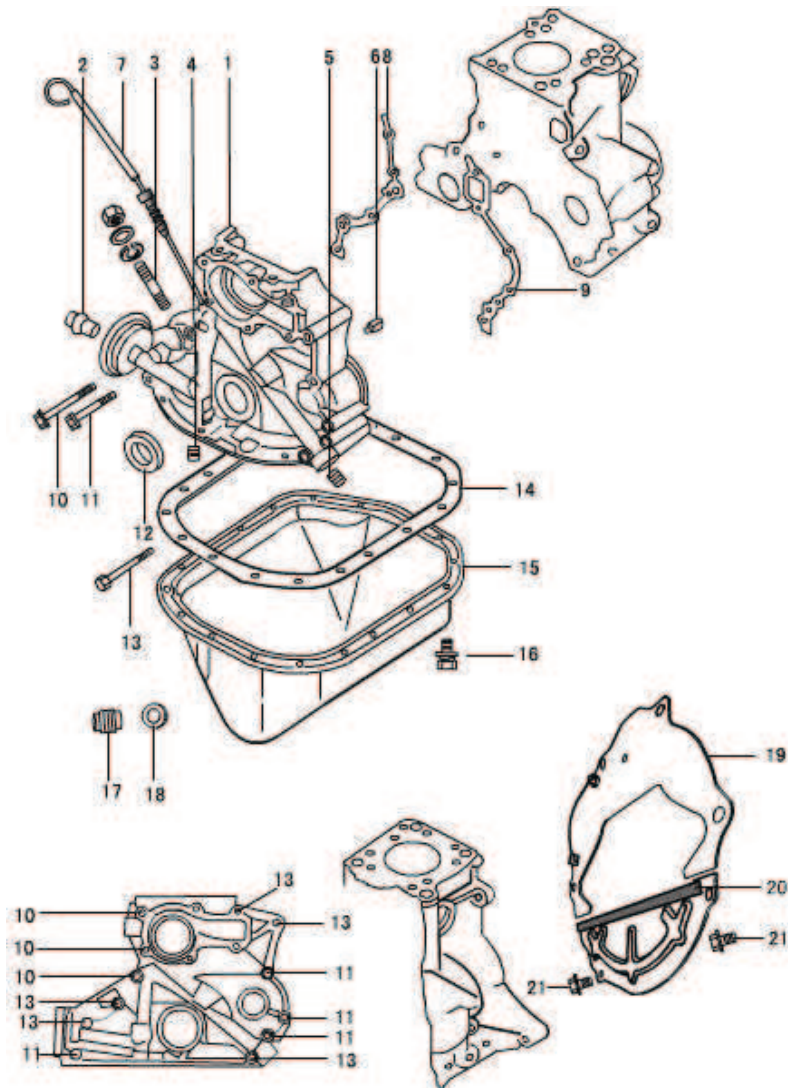
No.	Code name	Description	Qty
16	270Q-02008	Rear oil seal housing gasket	1
17	270Q-02007A	Rear oil seal housing	
18	LJ462Q-1-1000082D	Flywheel bolt	4
19	270Q-04007	Crankshaft bearing bushing	4
20	270Q-04008	Crankshaft thrust bearing bushing	2
21	270Q-02006C	Oil pressure switch	1
22	276Q-0210D	Cylinder block and bearing cap assembly	1
23	QTB42	Hollow-swage locating pin $\phi 13 \times 15.5$	2

2 SPROCKET COVER AND OIL PAN PART



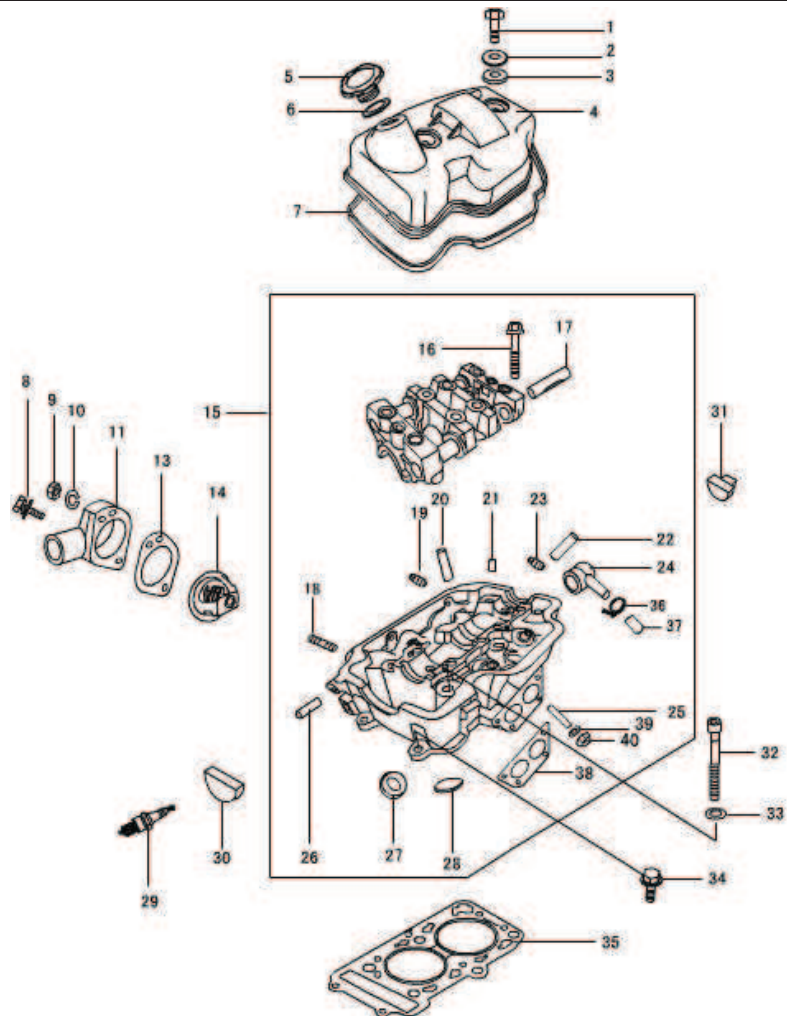
No.	Code name	Description	Qty
1	276Q—02201	Sprocket cover	1
2	270Q—02202	Oil filter threaded sleeve	1
3	GB/T900—88	Taper bolt AGM8—M8×22—8.8	1
4	QTB23	Hexagon-headed taper bolt NTP1/4	1
5	QTB23	Hexagon-headed taper bolt NTP3/8	1
6	270Q—02004	Jetting pipe	1
7	LJ276MT—2—02400	Dipstick	1
8	-2001	Left gasket of sprocket cover	1
9	-2002	Right gasket of sprocket cover	1
10	QTB10	Hexagon-headed bolt with edge M8×88	3
11	QTB10	Hexagon-headed bolt with edge M8×68	4

2 SPROCKET COVER AND OIL PAN PART



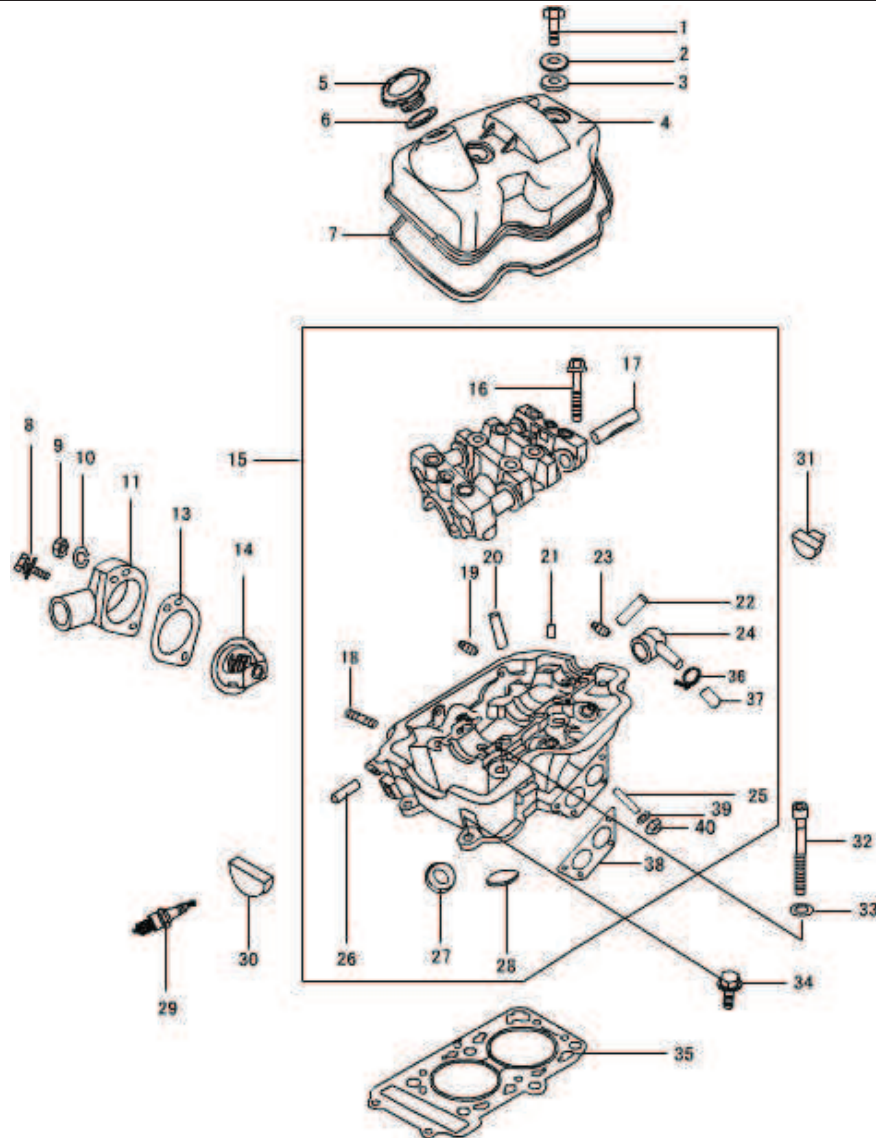
No.	Code name	Description	Qty
12	QTB53A	Crankshaft front oil seal with unidirectional flow around FB35×50×8	1
13	QTB10	Hexagon-headed bolt with edge M8×78	3
14	270—02005A	Oil Pan gasket	1
15	LJ276MT—2—02300	Oil Pan assembly	1
16	GB/T9074.17-1988	Bolt assembly M6×12	18
17	QTB24	Drain Plug M14×1.5	1
18	270Q—02303B	Drain Plug gasket	1
19	276MT—2—02500	backing plate	1
20	LY—1701220—01	Third and forth gear assy	1
21	QTB10	Hexagon-headed bolt with edge M6×10	2

3 CYLINDER HEAD PART



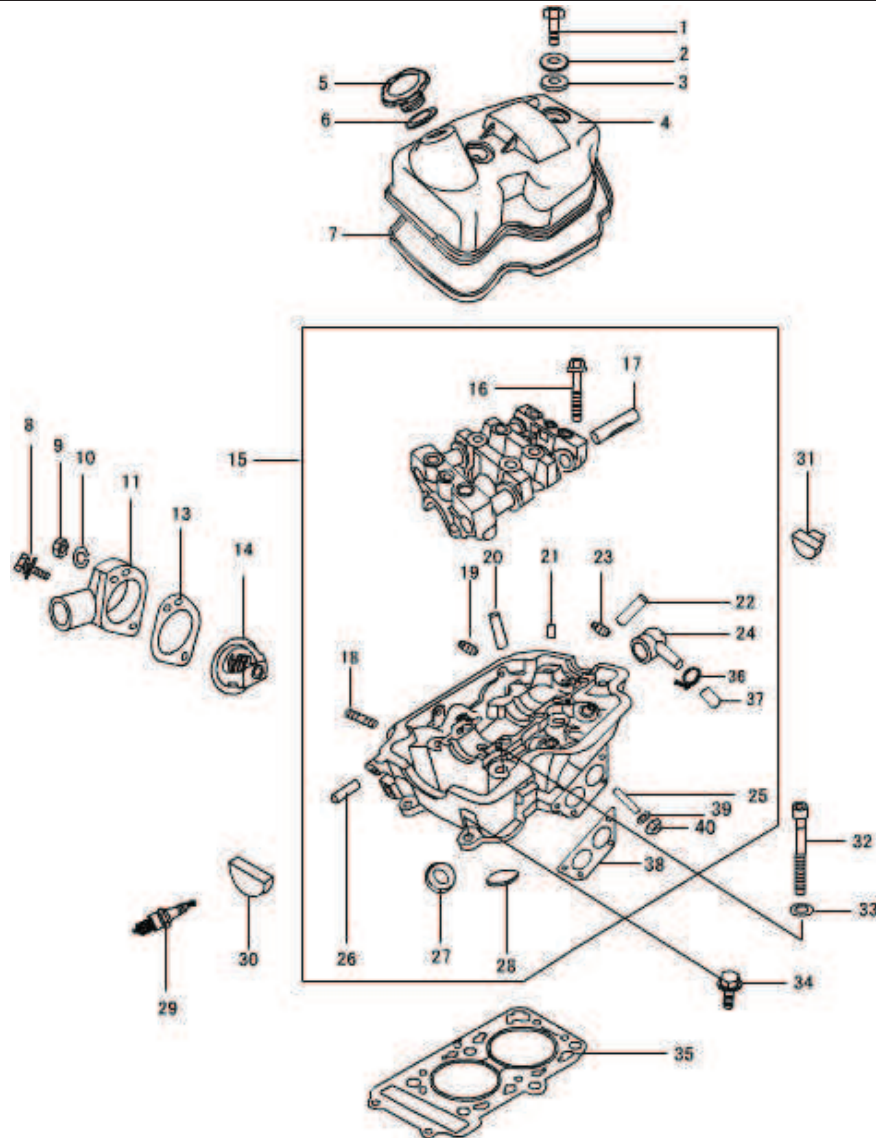
No.	Code name	Description	Qty
1	GB/T5782—1986	Bolt M8×40	2
2	270Q—01009	washer of cylinder head cover bolt	2
3	270Q—01011	Rubber pad of cylinder head cover bolt	2
4	276Q—01300	Cylinder head cover assembly	1
5	270Q—01400B	Filler cap assembly	1
6	270Q—01403	Filler cap rubber washer	1
7	270Q—01012B	Seal ring of cylinder head cover	1
8	GB/T9074.17—1988	Unit bolt M8×30	1
9	QTB15	Nut M8—8	5
10	GB/T93—1987	Spring washer φ8	5

3 CYLINDER HEAD PART



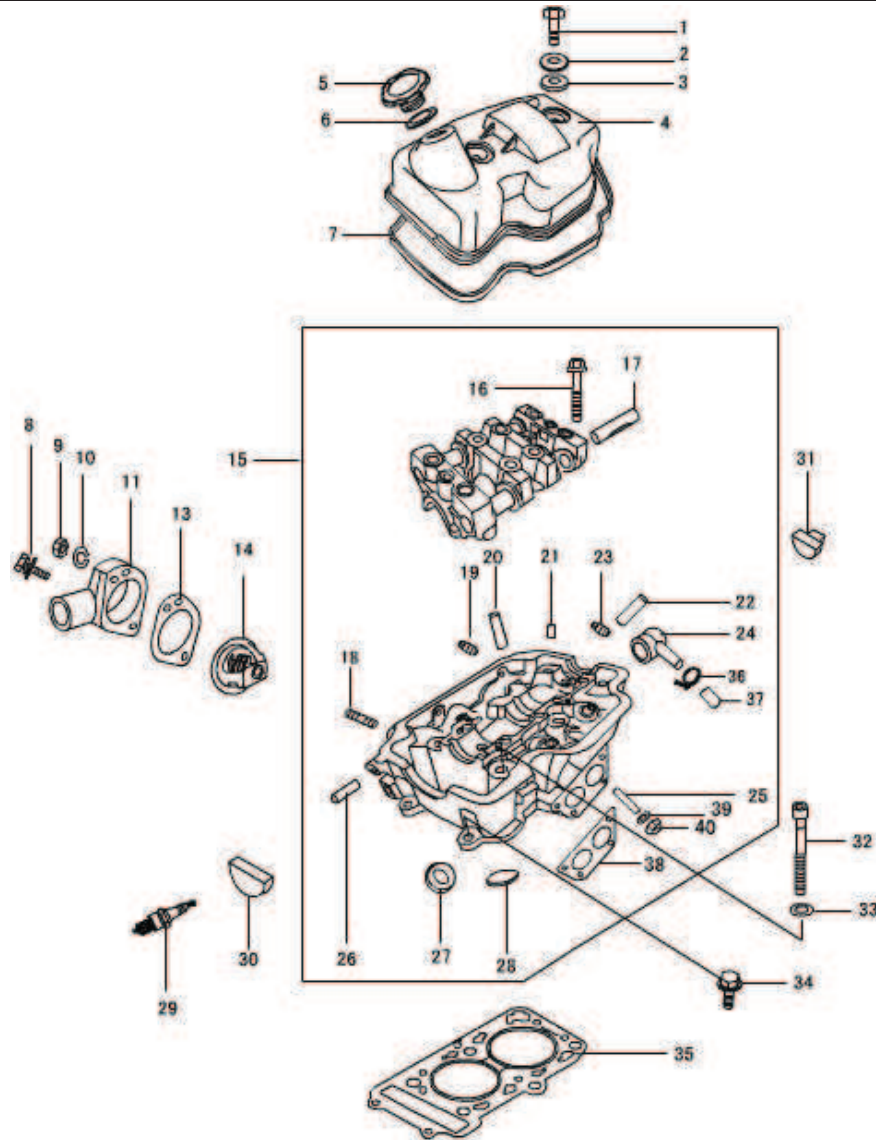
No.	Code name	Description	Qty
11	270Q—01017	Thermostat housing	1
13	270Q—01016	Thermostat gasket	1
14	270Q—01015	Thermostat	1
15	270Q—01100	Cylinder head and camshaft bearing part	
16	270Q—01109	Camshaft bearing bushing cap bolt	8
17	270Q—01007	Valve rocker arm shaft	4
18	GB/T898—1988	Stud AGM8×25—8.8	4
19	GB/T899—88	Stud AGM8×28—8.8	1
20	270Q—01104	Inlet valve guide	2
21	QTB40	Locating pin ϕ 6×14	6

3 CYLINDER HEAD PART



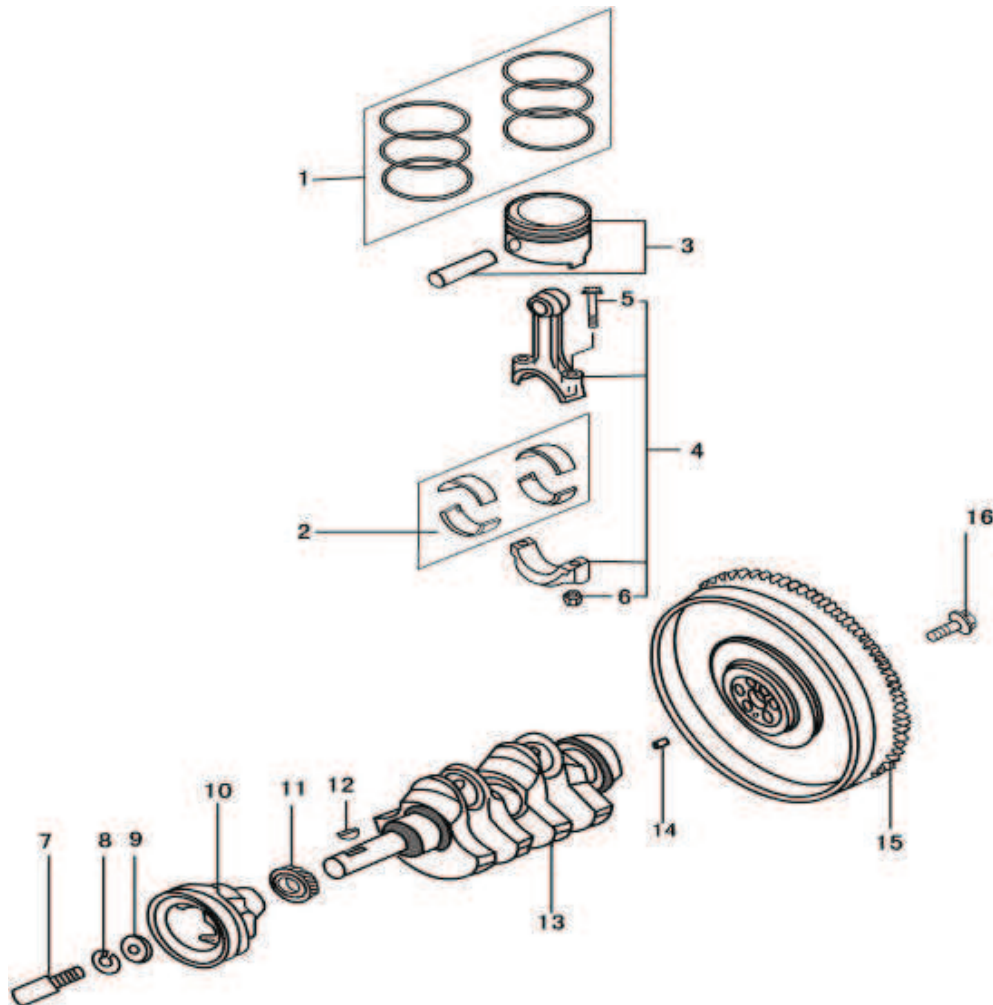
No.	Code name	Description	Qty
22	270Q—01105	Exhaust valve guide	2
23	GB/T899—88	bolt	1
24	270Q—01023A	Hexagon -headed taper plug	1
25	GB/T898—1988	Stud AGM8-M8×20—8.8	4
26	270Q—01018	Minor water pipe	1
27	270Q—01102	Intake valve seat	2
28	270Q—01103B	Exhaust valve seat	2
29	270Q—01019B	Water Temperature sender unit	1
30	270Q—01013	Front Semi-Circle Oil Seal	1
31	270Q—01014	Rear Semi-Circle Oil Seal	1

3 CYLINDER HEAD PART



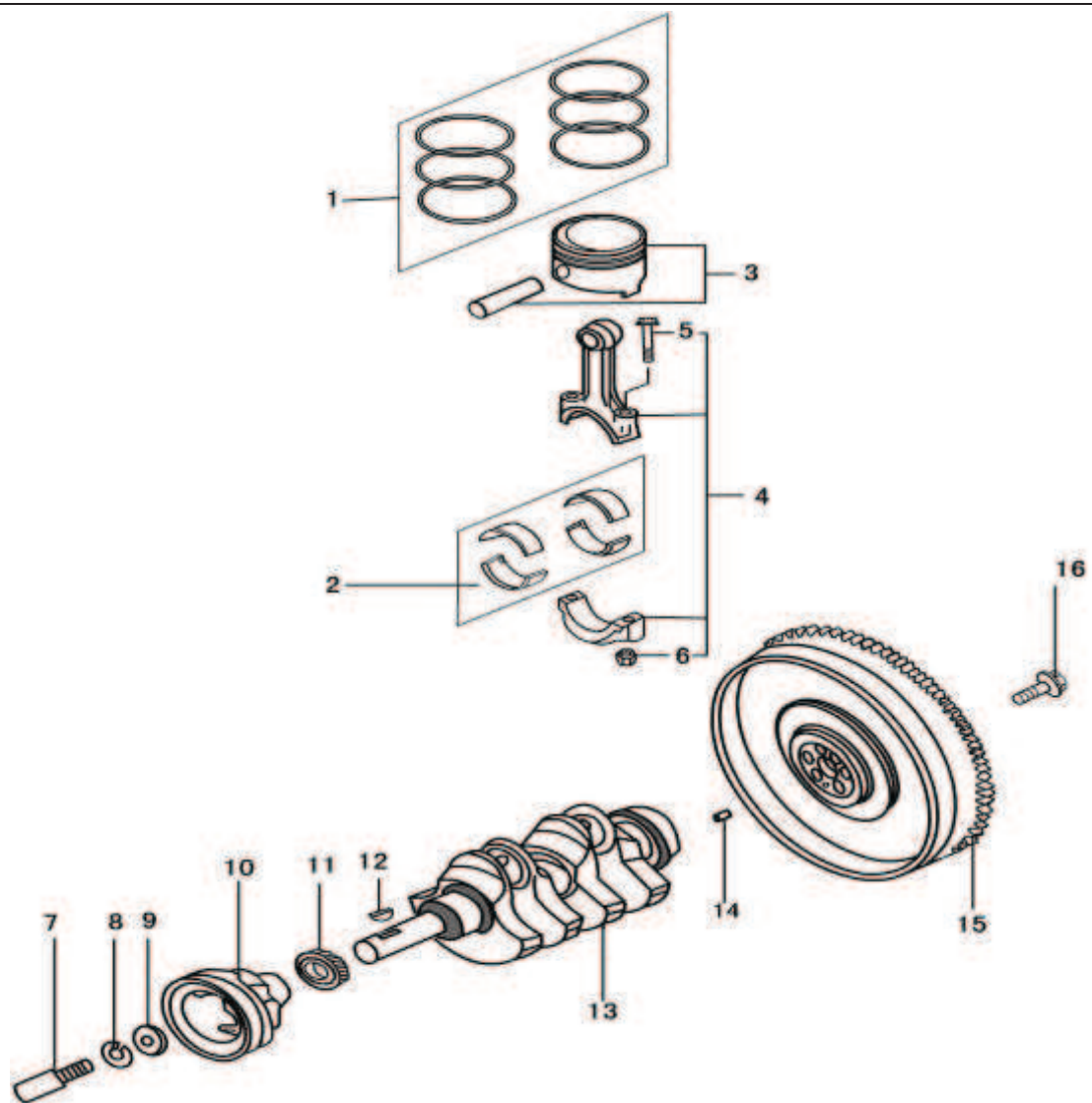
No.	Code name	Description	Qty
32	270Q—01022	Cylinder head bolt	6
33	GTB30	head bolt washer $\phi 21 \times \phi 11 \times 3$	6
34	GB/T9074.17—1988	Bolt assembly M8×28	2
35	276Q—01021	Cylinder head gasket	1
36	270Q—01025	Rubber blanking plug	1
37	ZB/TT32005.1—88	hose clamp	1
38	270Q—01024	Exhaust pipe gasket	1
39	GB/T93—1987	Washer8	4
40	QTB15	Nut M8—8	4

4 PISTON , CONNETING ROD AND CRANKSHAFT PART



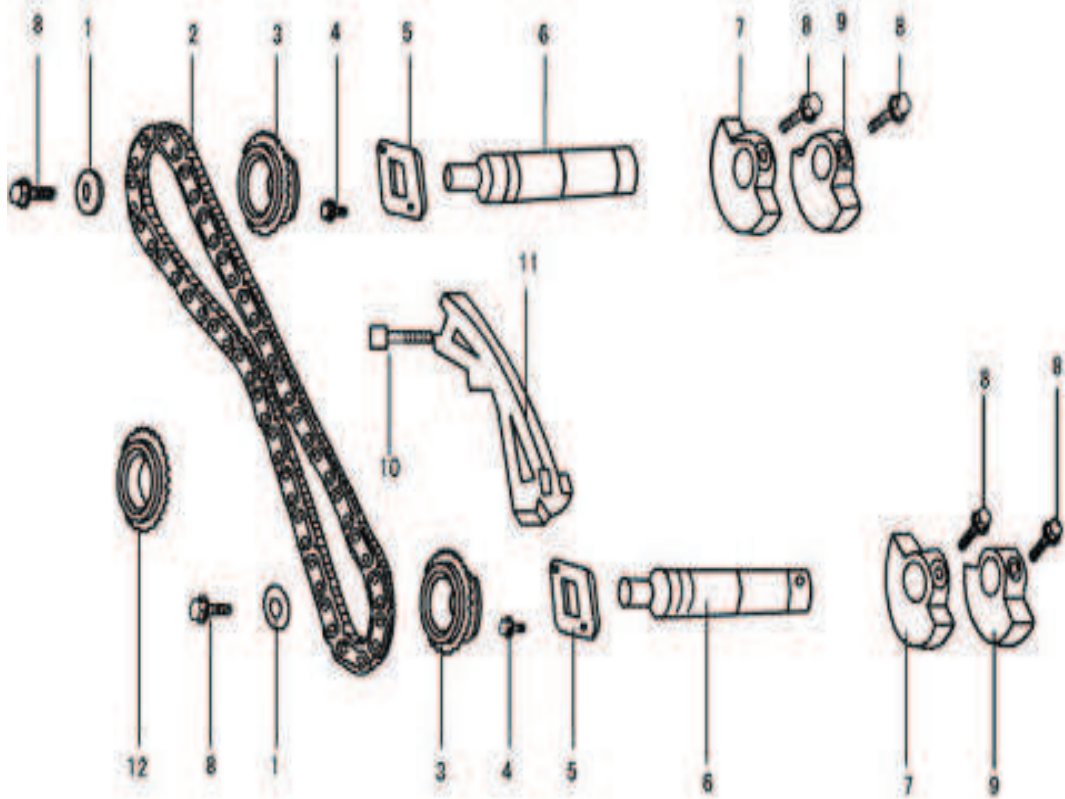
No.	Code name	Description	Qty
1	276Q—03002	Piston ring (1)	2
	276Q—03003	Piston ring (2)	2
	276Q—03200	Piston ring (3)	2
2	270Q—03006	Connecting rod bearing	4
3	276Q—03001	Piston	2
	276Q—03004B	Piston Pin	2
4	270Q—03100	Connecting rod assembly(1)	2
		Connecting rod assembly(2)	2
5	270Q—03103	Connecting rod bolt	4
6	270Q—03104	Connecting rod nut	4
7	270Q—04001	Front pulley bolt	1

4 PISTON , CONNETING ROD AND CRANKSHAFT PART



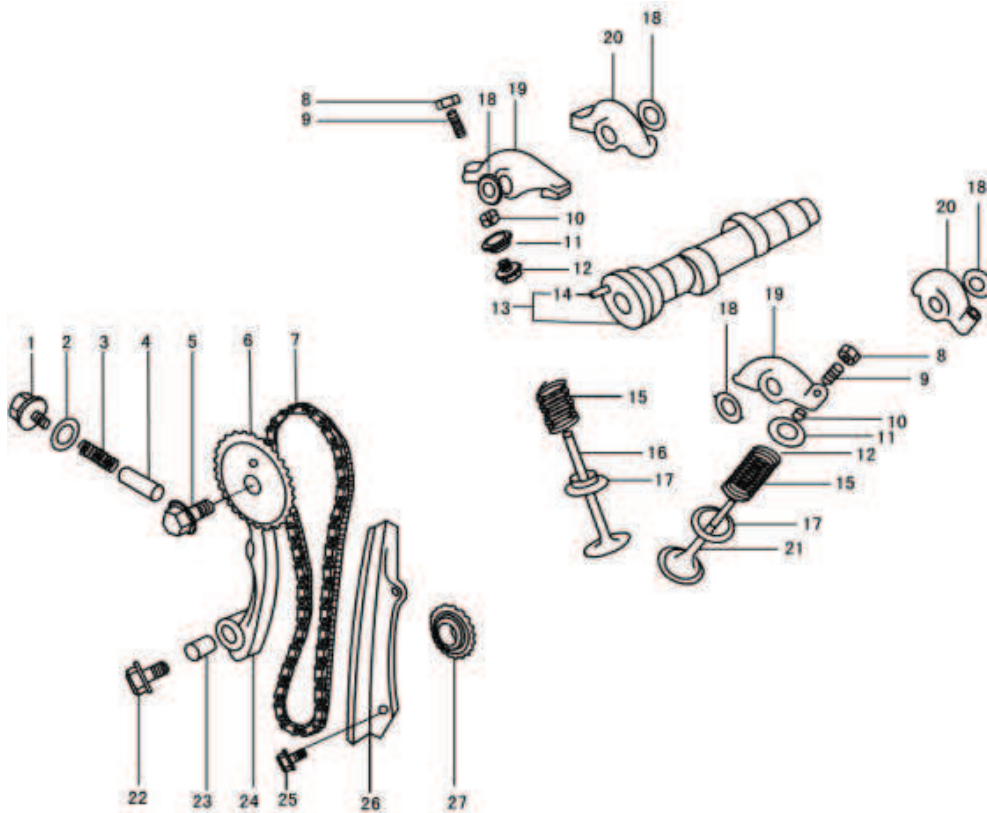
No.	Code name	Description	Qty
8	GB/T859—1987	Spring washer 12	1
9	270Q—04002	Washer	1
10	270Q—04003	Crankshaft belt pulley	1
11	270Q—04004A	Driven bevel gear	1
12	QTB44	Woodruff key4×19	2
13	276Q—04006B	Crankshaft	1
14	LJ462Q1—1000135D	Locating pin of fly wheel	1
15	LJ368—1005011	Ring gear assembly of fly wheel	1
16	LJ462Q—1—1005014D	Flywheel bolt	6

5 BALANCING SHAFT PART



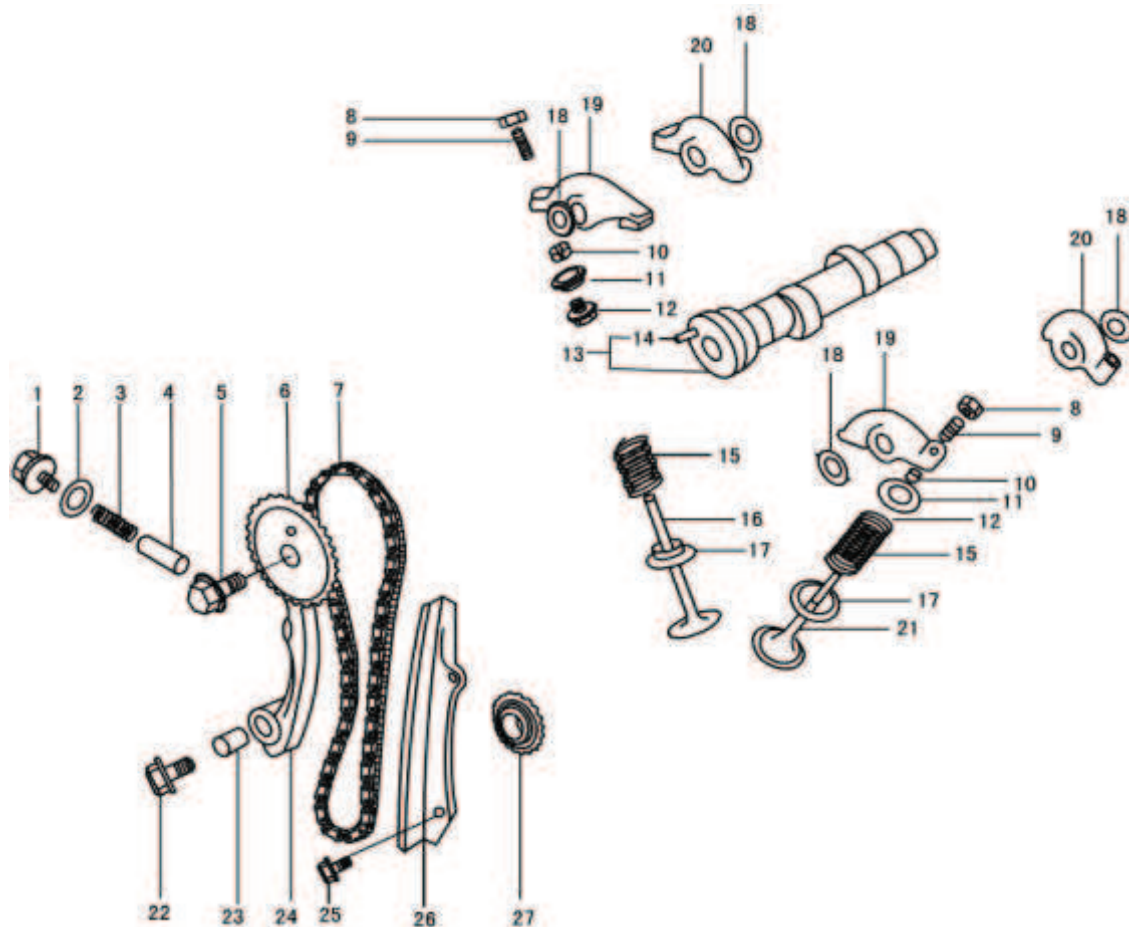
No.	Code name	Description	Qty
1	QTB30	Thick washer $\phi 24 \times \phi 8.5 \times 3$	2
2	270Q—04400	Balancing chain assembly	1
3	270Q—04310A	Balancing shaft sprocket assembly	2
4	QTB10	Hexagon-headed bolt with edge M6×10	4
5	270Q—04301	Baffle plate of Balancing shaft	2
6	270Q—04302A	Balancing shaft	2
7	270Q—04303	Front balancing weight	2
8	270Q—04305	Balancing weight bolt	6
9	270Q—04304	Rear balancing weight	2
10	QTB10	Hexagon-headed bolt with edge M6×45	2
11	270Q—04200B	Guide pad assembly of balancing chain	1
12	270Q—04012A	Cam chain drive sprocket	1

6 CAMSHAFT AND CHAIN TRAIN PART



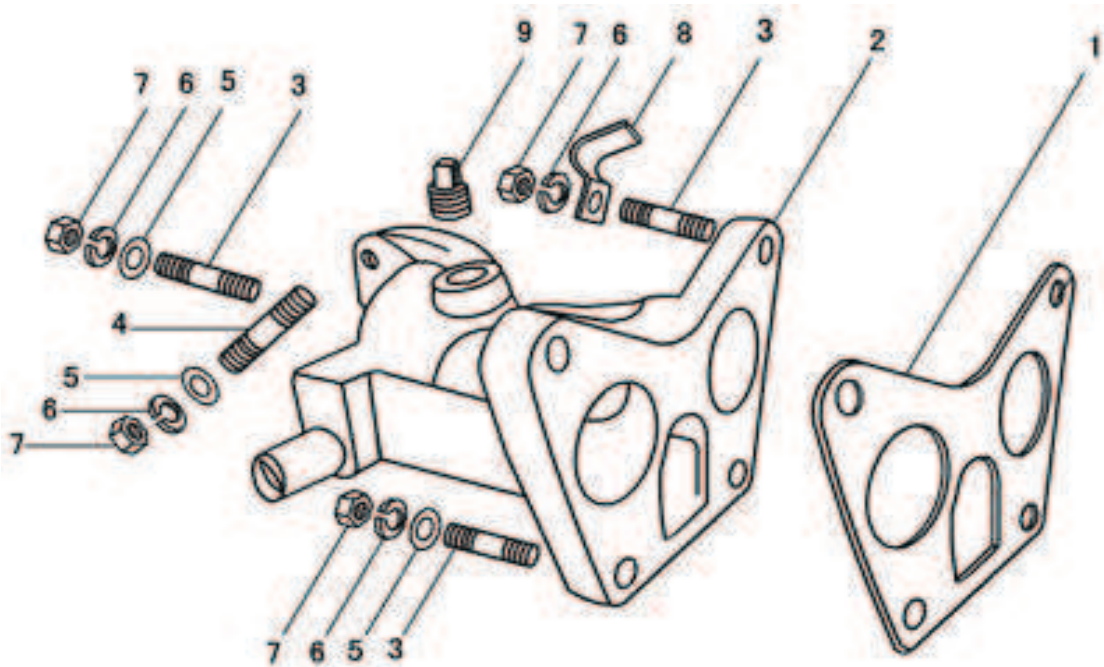
No.	Code name	Description	Qty
1	270Q—05400	Bolt assembly	1
2	270Q—05007	Washer	1
3	270Q—05005A	Tensioning spring	1
4	270Q—05004	Tensioning spring plate	1
5	QTB13	Small hexagon-headed bolt with edge M12×1.25×30	1
6	270Q—05002A	Camshaft timing sprocket wheel	1
7	270Q—05100	Timing chain assembly	1
8	270Q—01502	Valve clearance adjusting nut	4
9	270Q—01501	Valve clearance adjusting bolt	4
10	270Q—01004	Valve locker	8
11	270Q—01003	Retainer	4
12	270Q—01200	Stem seal	4
13	276Q—05001	Camshaft	1
14	QTB40	Dowel pin $\phi 6 \times 14$	1

6 CAMSHAFT AND CHAIN TRAIN PART



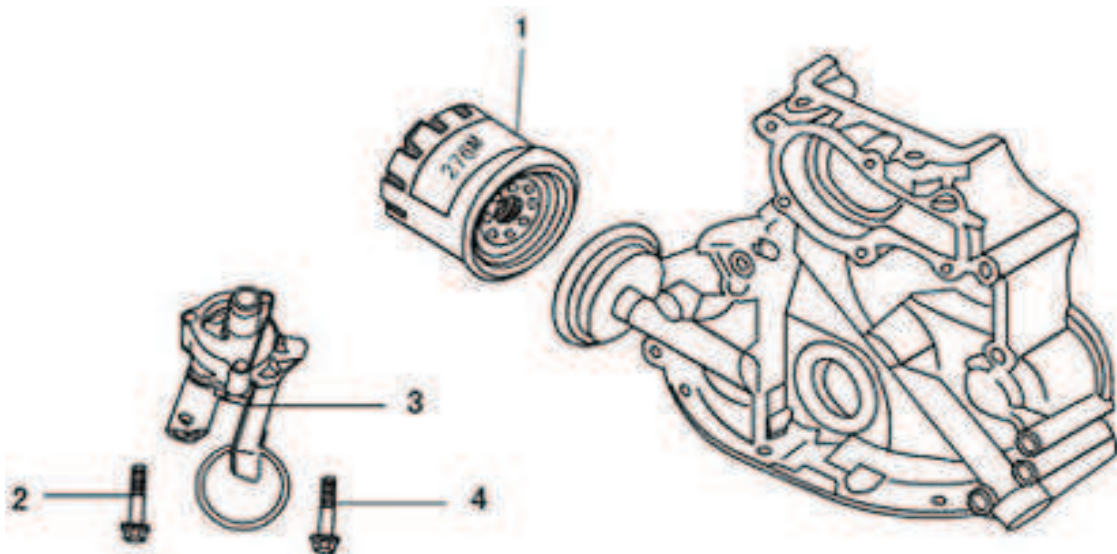
No.	Code name	Description	Qty
15	276Q—01002A	Valve spring	4
16	270Q—01005A	Intake Valve	2
17	270Q—01001	Lower seat of valve spring	4
18	270Q—01008	Wave form washer	4
19	270Q—01510	Valve rocker arm of first cylinder	2
20	270Q—01610	Valve rocker arm of second cylinder	2
21	270Q—01006	Exhaust Valve	2
22	QTB13	Small hexagon-headed bolt with edge M8×32	1
23	270Q—05003	Dowel	1
24	270Q—05300	Chain tighten	1
25	QTB10	Hexagon-headed bolt with edge M6×10	2
26	270Q—05200	Chain guide plate	1
27	270Q—04005A	Crankshaft timing chain sprocket	1

7 INTAKE MANIFOLD PART



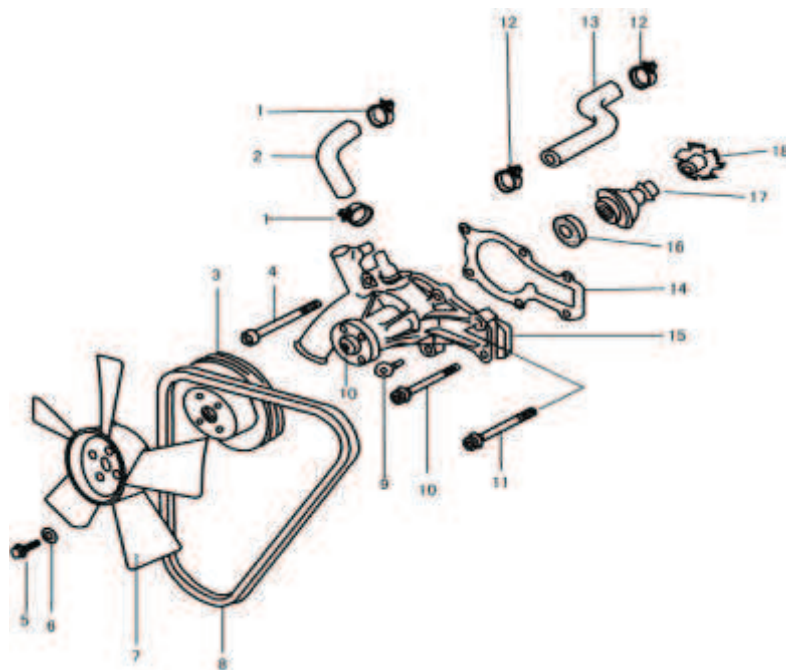
No.	Code name	Description	Qty
1	270Q—06006	Intake manifold paper gasket	1
2	LJ276MT—2—06000	Intake manifold	1
3	GB/T898—1988	Stud AC—M8×25—8.8	4
4	GB/T848—1985	Stud AC—M8×28—8.8	1
5	QTB77	Flat washer	6
6	GB/T93—1978	Spring washer $\phi 8$	6
7	QTB15	Nut M8—8	2
8	QTB26	Clip	3
9	GB/T899—1988	Square head taper plug Z 3/8 "	1

8 OIL FILTER AND OIL PUMP PART



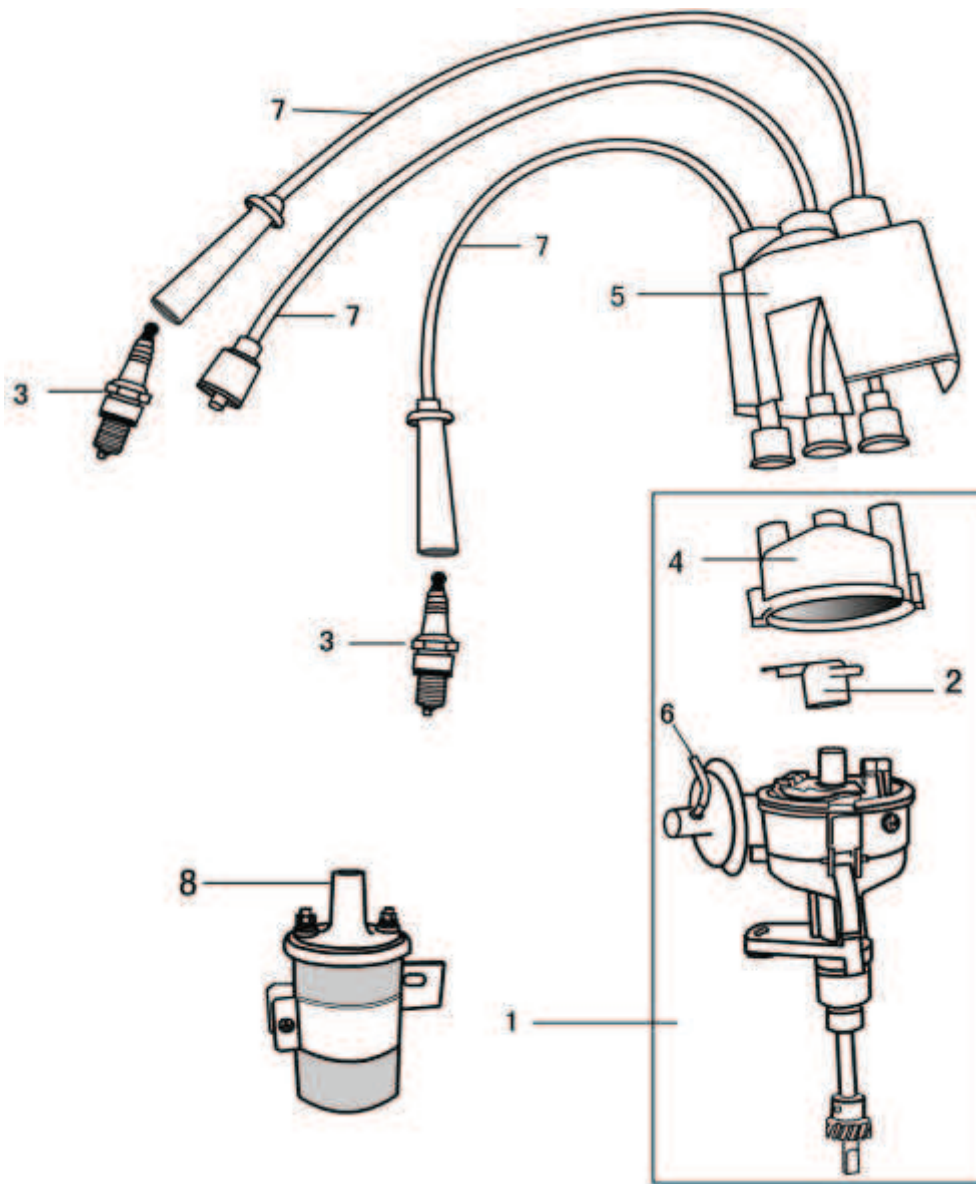
No.	Code name	Description	Qty
1	270Q-17000	Oil Filter assembly	1
2	GB/T9074.17-1988	Bolt assembly M6×48	2
3	LJ276MT-2-16000	Oil pump subassembly	1
4	GB/T9074.17-1988	Bolt assembly M6×53	1

9 WATER PUMP AND FAN PART



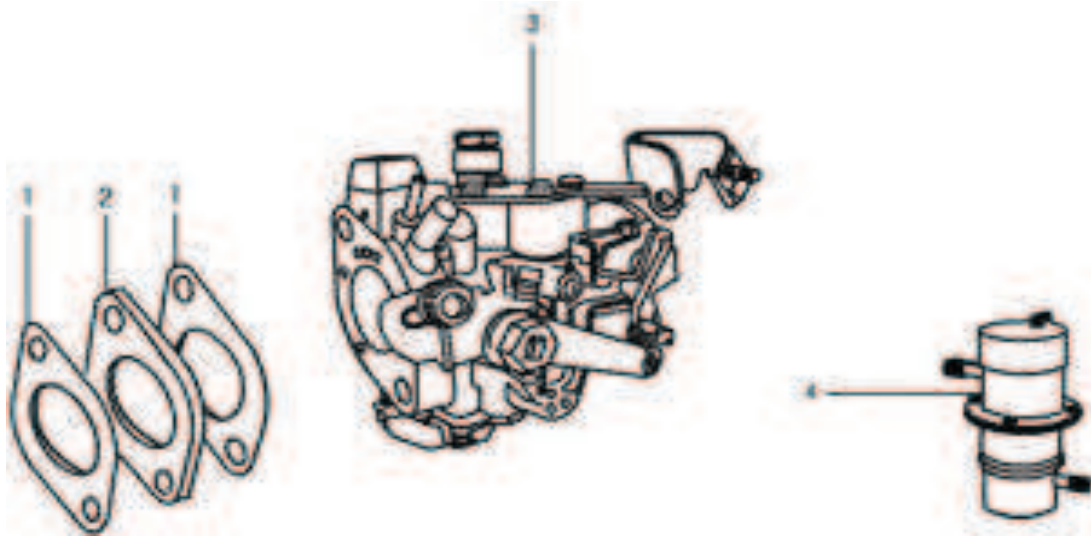
No.	Code name	Description	Qty
1	ZB/TT32005.1—88	Hose clamp	2
2	270Q—19011	Rubber pipe (2)	1
3	270Q—19013	water pump pulley	1
4	QTB10	Hexagon-headed bolt with edge M8×88	2
5	GB/T9074.15—1988	Hexagon head bolt M6×20	4
6	QTB32	Washer 7.5	4
7	276Q—19200	Fan assembly	1
8	QTB93A	Fan belt AV10×845	1
9	QTB10	Hexagon-headed bolt with edge M8×23	2
10	270Q—19002B	bolt	1
11	QTB10	Hexagon-headed bolt with edge M8×78	2
12	ZB/TT32005.1—88	Hose clamp	2
13	LJ276MT—2—19009	Rubber pipe (1)	1
14	276Q—19001	Water pump gasket	1
15	276Q—19100	Water pump assembly	1
16	GB276—64	Roller bearing E60101	2
17	270Q—F12—00	Water seal assembly	1
18	276Q—19003	Impeller	1

10 DISTRIBUTOR AND ITS LINE UNIT



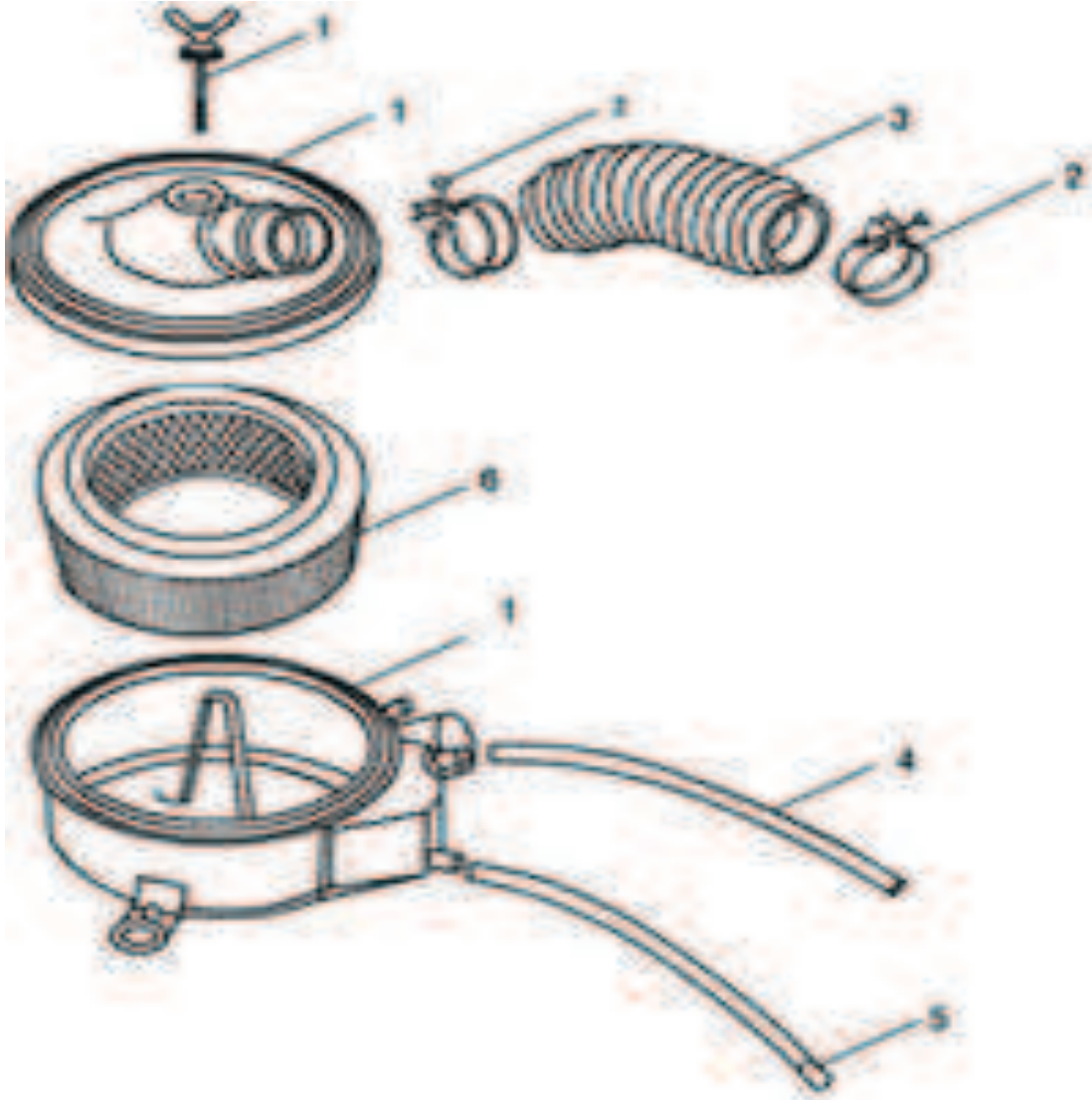
No.	Code name	Description	Qty
1	270Q-23510W	Distributor assembly (non contact)	1
2	FDQ-60000	Rotor assembly	1
3	F6RTC	Spark plug(damping)	2
4	FDQ-1-50000	Distributor cap assembly	1
5	270Q-23901	Distributor protective cover	1
6	LJ276MT-2-23501	Vacuum rubber tube	1
7	ZN410-163A	High - tension leads(anti-jamming)	2
8	LJ462Q-1-3705010DW	Ignition coil assembly	1

11 CARBURETOR PART



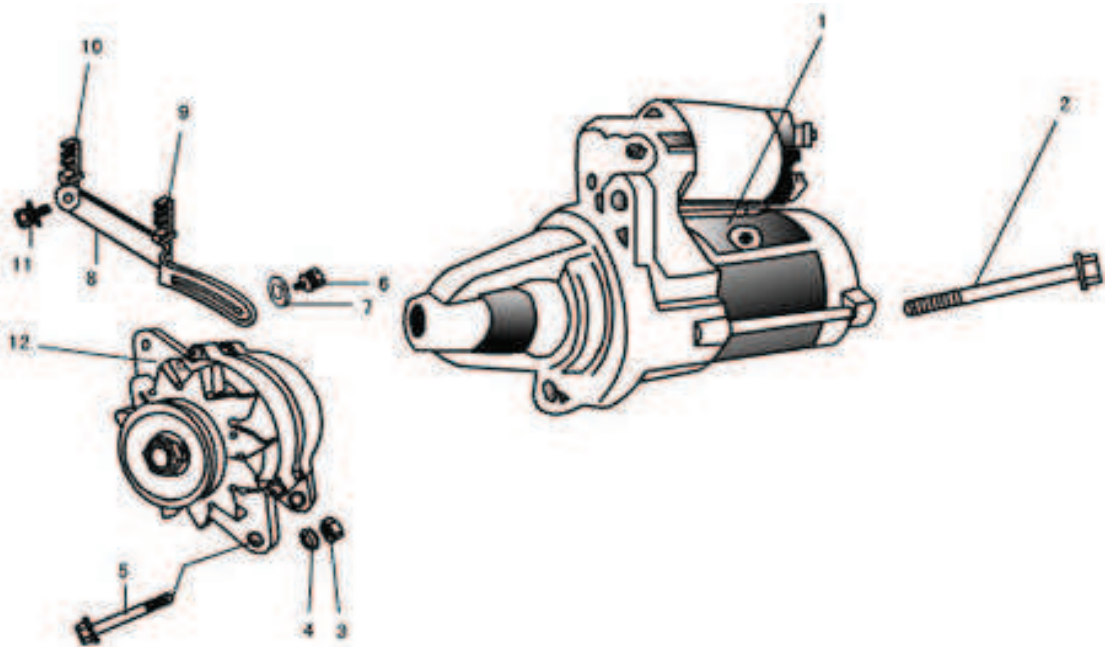
No.	Code name	Description	Qty
1	270Q—06004	Carburetor gasket	2
2	270Q—06003	Carburetor insulator	1
3	276Q—13000-2	Carburetor assembly (blue marked)	1
4	JB12D—H	Electric petrol pump	1

12 AIR FILTER AND PIPE LINE PART



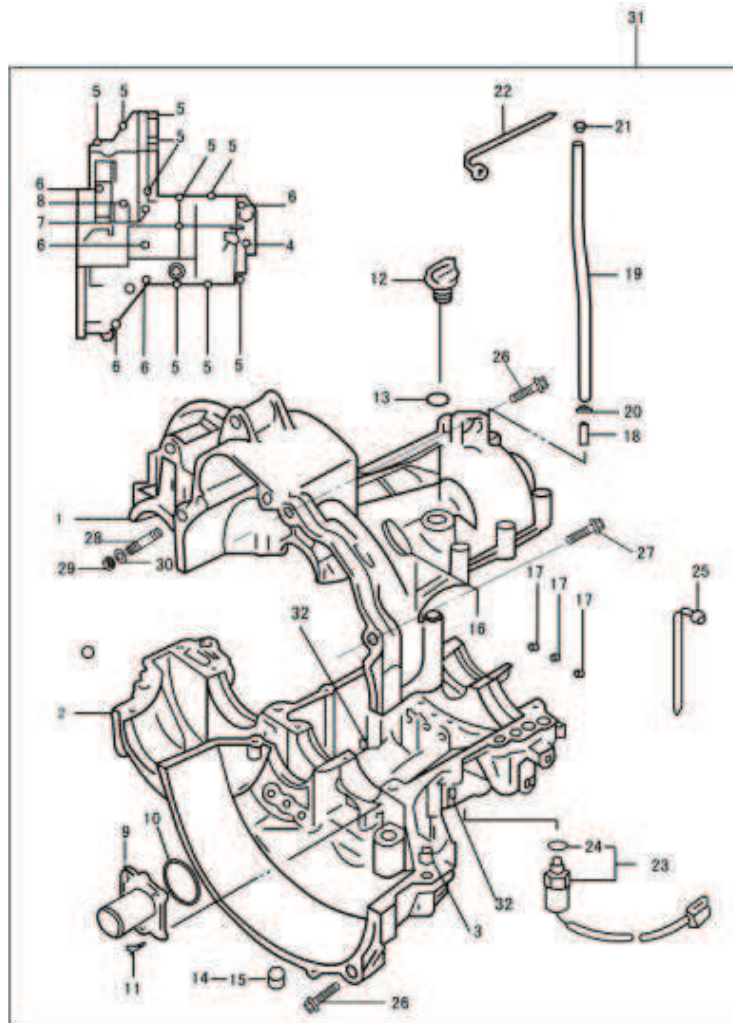
No.	Code name	Description	Qty
1	LJ276MT-2-07100F	Air filter housing	1
2	QK1706-03	Flexible hose clamp	2
3	LJ276MT-2-07001F	Flexible intake hose	1
4	LJ276MT-2-07002F	Rubber breathing pipe	1
5	270Q-07003	Storing dust pipes	1
6	QK1706-05	air filter(marked)	1

13 STARTER , ALTERNATOR AND THEIR FASTENING PIECE



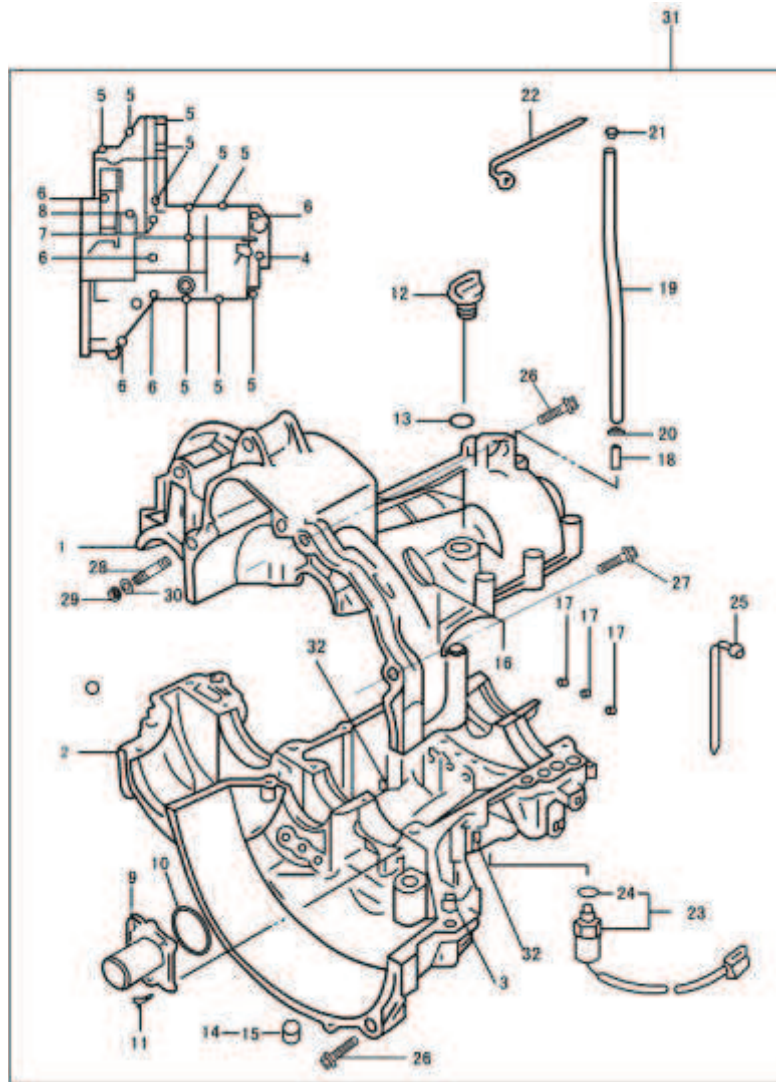
No.	Code name	Description	Qty
1	LJ368Q—3708010	Starter assembly	1
2	LJ368Q—1000068	Starter clamp bolt	2
3	QTB15	Hexagon nut M8—8	1
4	GB/T93—1987	Spring washer 8	1
5	270Q—02203A	Adjusting bolt	1
6	GB/T9074.15—1988	Bolt assembly M8×25	1
7	QTB30	Thick washerφ24×φ8.5×3	1
8	270Q—25010A	Alternator bracket	1
9	270Q—25001	Second fixed swift	1
10	270Q—25020	First fixed swift (insert)	1
11	GB/T9074.15—1988	Bolt assembly M8×20	1
12	LJ462Q—1—3701010D	Alternator	1

14 TRANSMISSION TANK



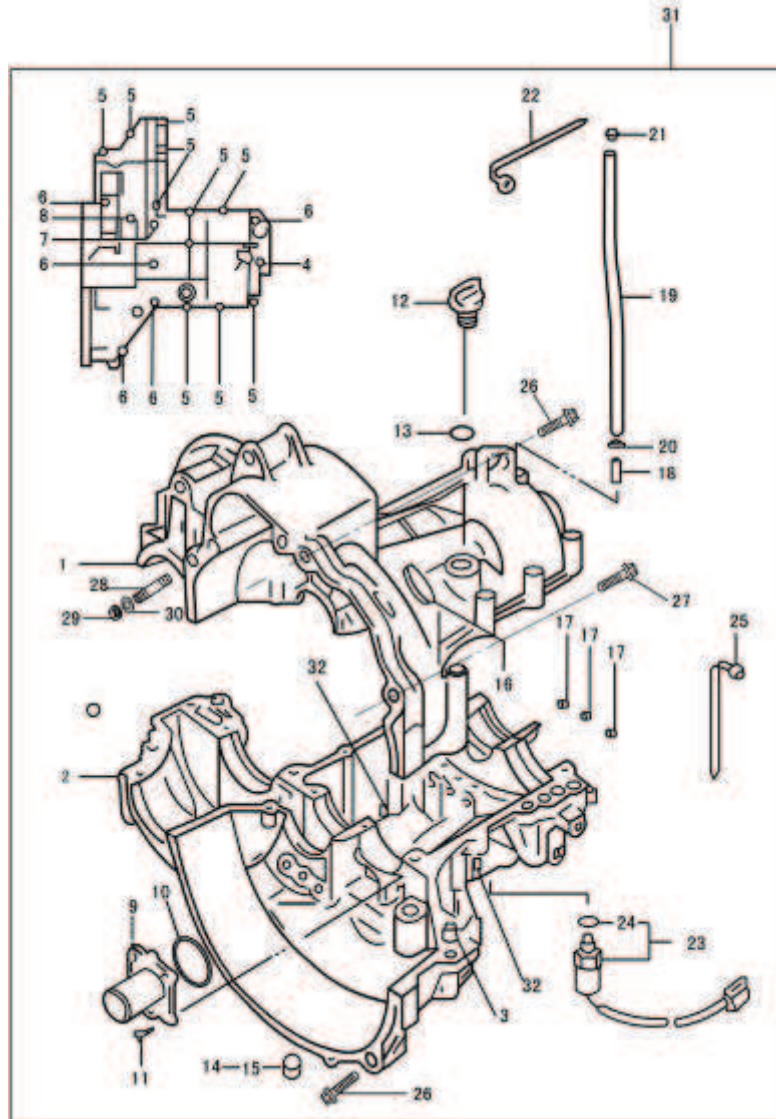
No.	Code name	Description	Qty
1	1701111	Upper housing of transmission	1
2	1701112	Lower housing of transmission	1
3	1701113	Locating pin	2
4	GBT5787—86	Bolt M6×40	1
5	GBT5787—86	Bolt M8×50	10
6	GBT5787—86	Bolt M8×70	5
7	GBT5787—86	Bolt M8×90	1
8	GBT5787—86	Bolt M8×135	1
9	1701301	Baffle plate of seal ring of the first shaft	1
10	GB3452.1—82	“O” type seal ring 40×2.65	1
11	GB819—85	Bolt M6×16	4

14 TRANSMISSION TANK



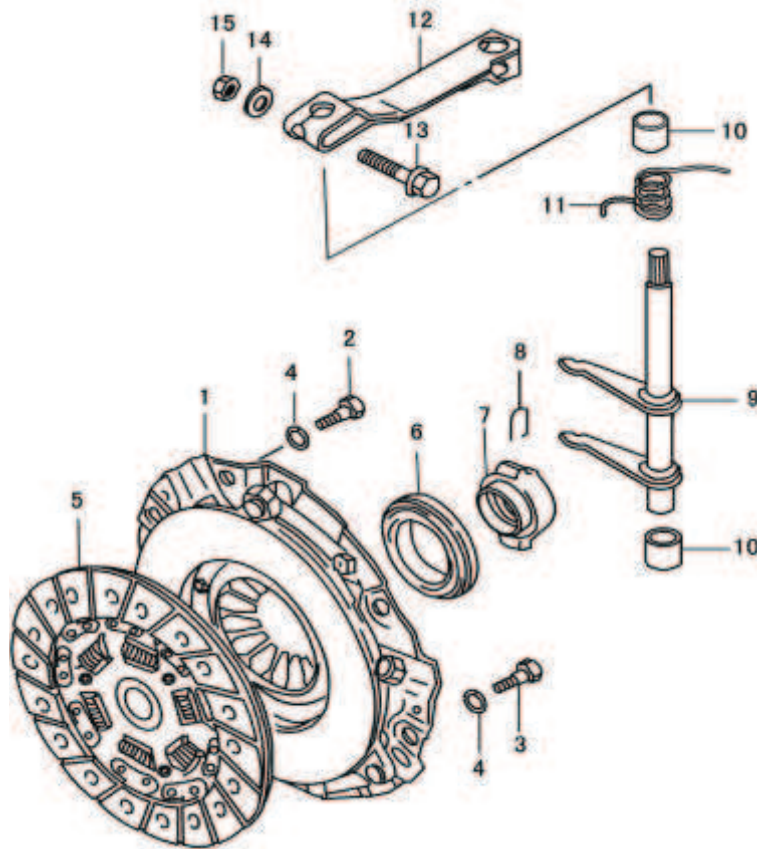
No.	Code name	Description	Qty
12	1701140	Dip stick assembly	1
13	GB3452.1—82	“O” type seal ring15×2.65	1
14	ZBT32001.3—87	Bolt Z 1 / 2" —14	1
15	ZBT32001.9—87	Bolt Z 1 / 2" —14(magnetism)	1
16	1701017	Sight hole cover	1
17	1702050	Sealing cover assembly of shift lever	3
18	1701025	Breathing pipe tie-in	1
19	1701026	Breathing pipe	1
20	1701023	Perkins joint	1
21	1701027	Breathing pipe plug	1
22	1701024	Line fastener	1

14 TRANSMISSION TANK



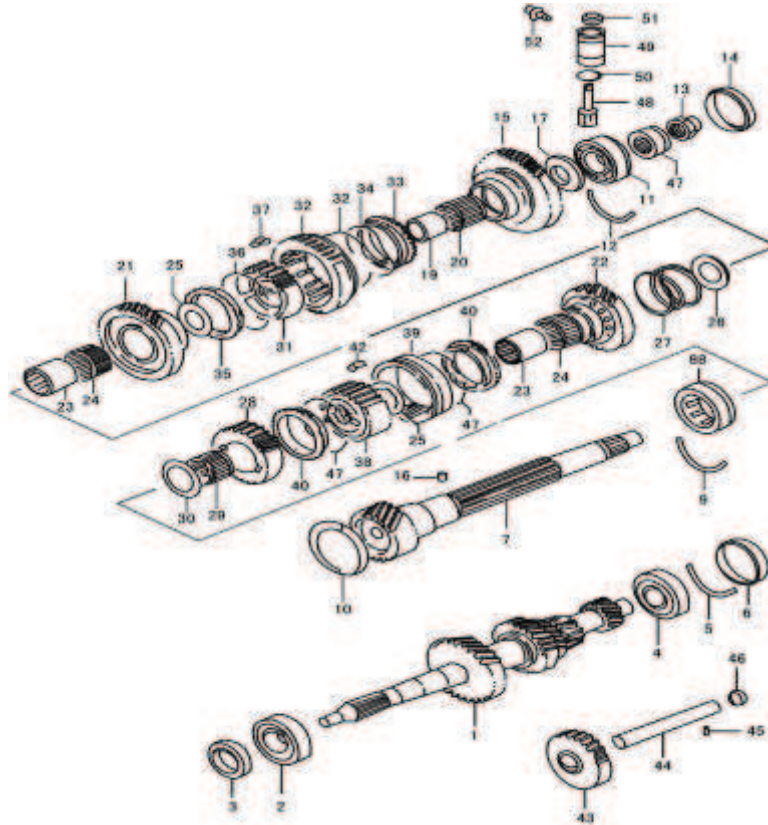
No.	Code name	Description	Qty
23	3729010	Reverse switch	1
24	GB3452.1—82	“O” type seal ring15×2.65	1
25	1000013	Supporting piece	1
26	1701024	Line fastener	1
27	LJ368Q—1000163	Shouldered tap bolt	2
28	LJ368Q—1000169	Shouldered tap bolt	1
29	LJ368Q—1000167	Stud	1
30	GB/T6171—1986	Nut M10×1.25	1
31	GB/T848—1985	Washer10	1
32	4T06C	Transmission assembly	1

15 CLUTCH, SHIFTER SHAFT AND ROCKER ARM



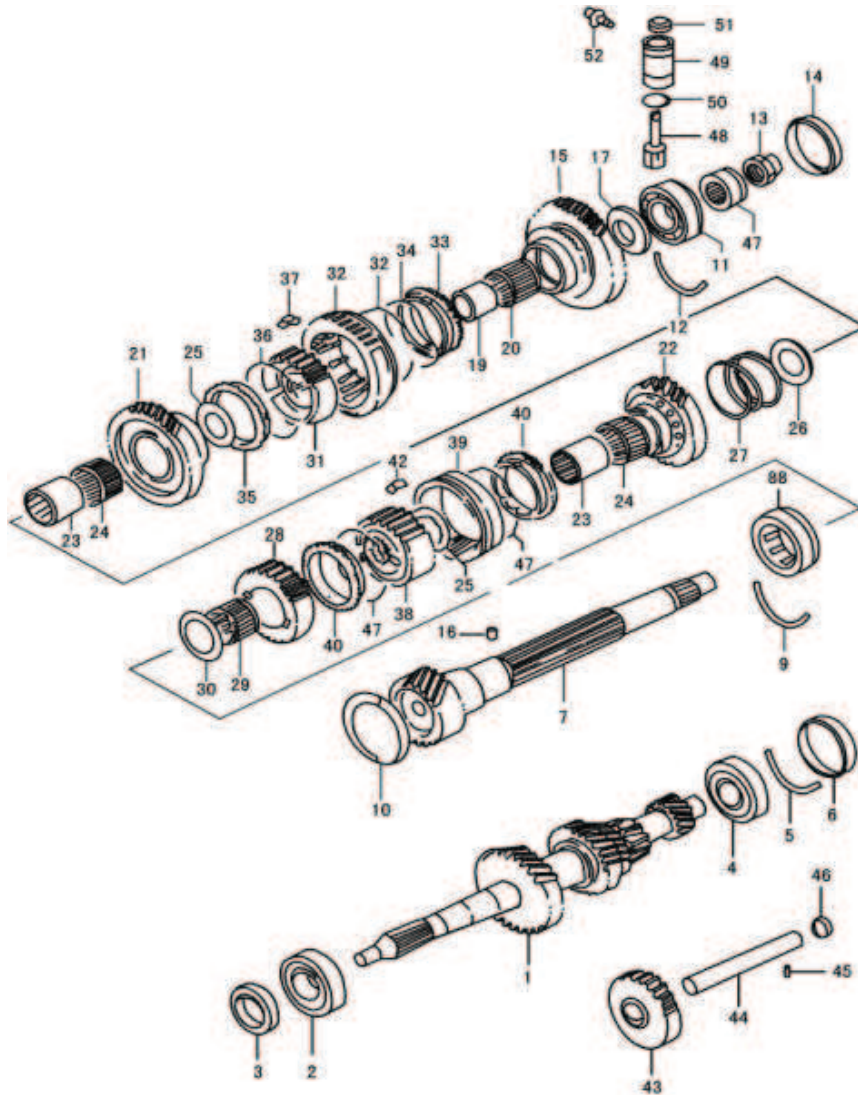
No.	Code name	Description	Qty
1	QST160HH14	Clutch pressure plate	1
2	LJ462Q—1—1005024D	Clutch cover bolt	2
3	GB/T9074.15—1988	Bolt tab M8×16	4
4	GB859—87	Light gage spring washer8	6
5	DST160A71	Clutch plate	1
6	1701510	Clutch release bearing	1
7	1701501	Release bearing carrier	1
8	1701022	Circlip	2
9	1701040	Clutch fork	1
10	1701019	Bushing ring	2
11	1701018	Tension spring	1
12	1701016	Clutch action arm	1
13	GB5789—86	Bolt AM8×35	1
14	GB97.1—85	Washer8	1
15	GB6170—86	Nut M8	1

16 FIRST SHAFT AND COUNTERSHAFT



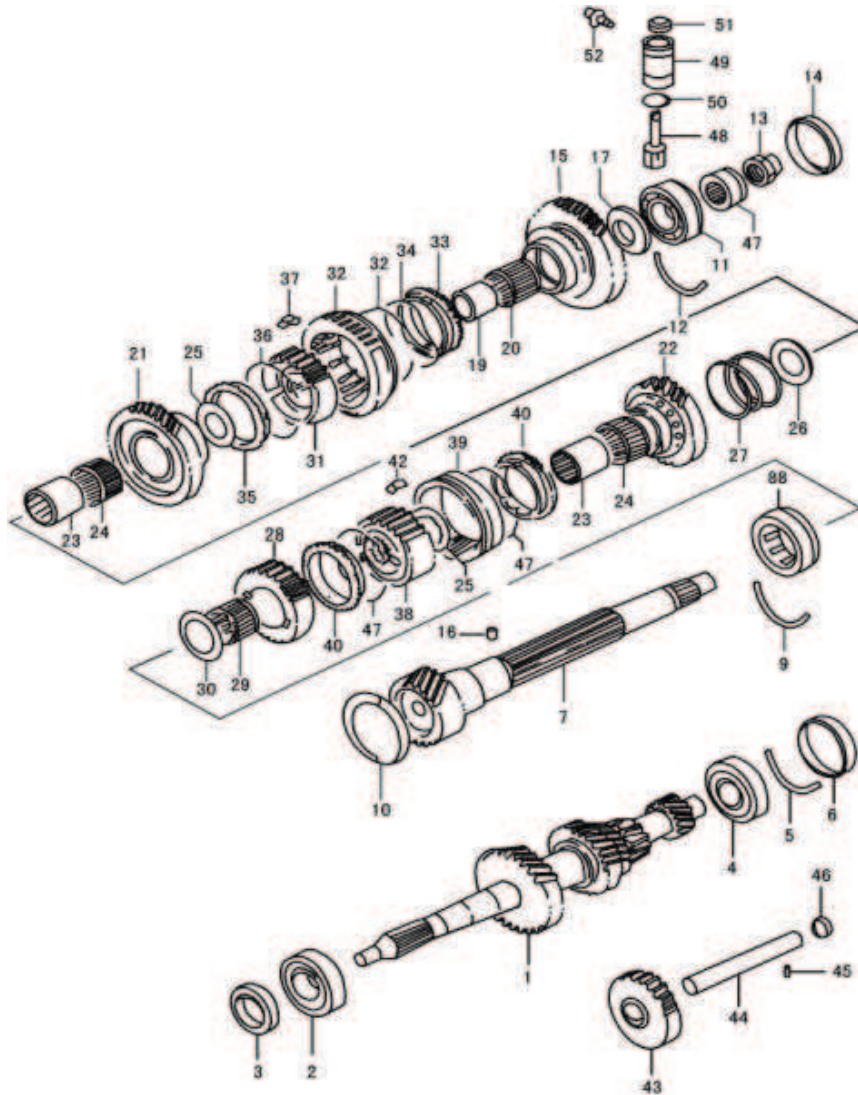
No.	Code name	Description	Qty
1	1701130	The first shaft assembly	1
2	GB/T276—94	Endocentric ball bearing 6204—2RS/P53	1
3	1701310	The first shaft seal ring assembly	1
4	GB/T276—94	Endocentric ball bearing 6204—2RS/P53	1
5	1701011	Thrust ring of the first shaft bearing	1
6	1701120	The first shaft seal cap assembly	1
7	1701201	Countershaft	1
8	1701250	Cylindrical roller bearing with Locking notch and without inner circle	1
9	1701013	Thrust ring of countershaft bearing (right)	1
10	1701060	Sealing cap assembly of countershaft (right)	1
11	GB/T276—94	Endocentric ball bearing 6204—2RS/P53	1

16 FIRST SHAFT AND COUNTERSHAFT



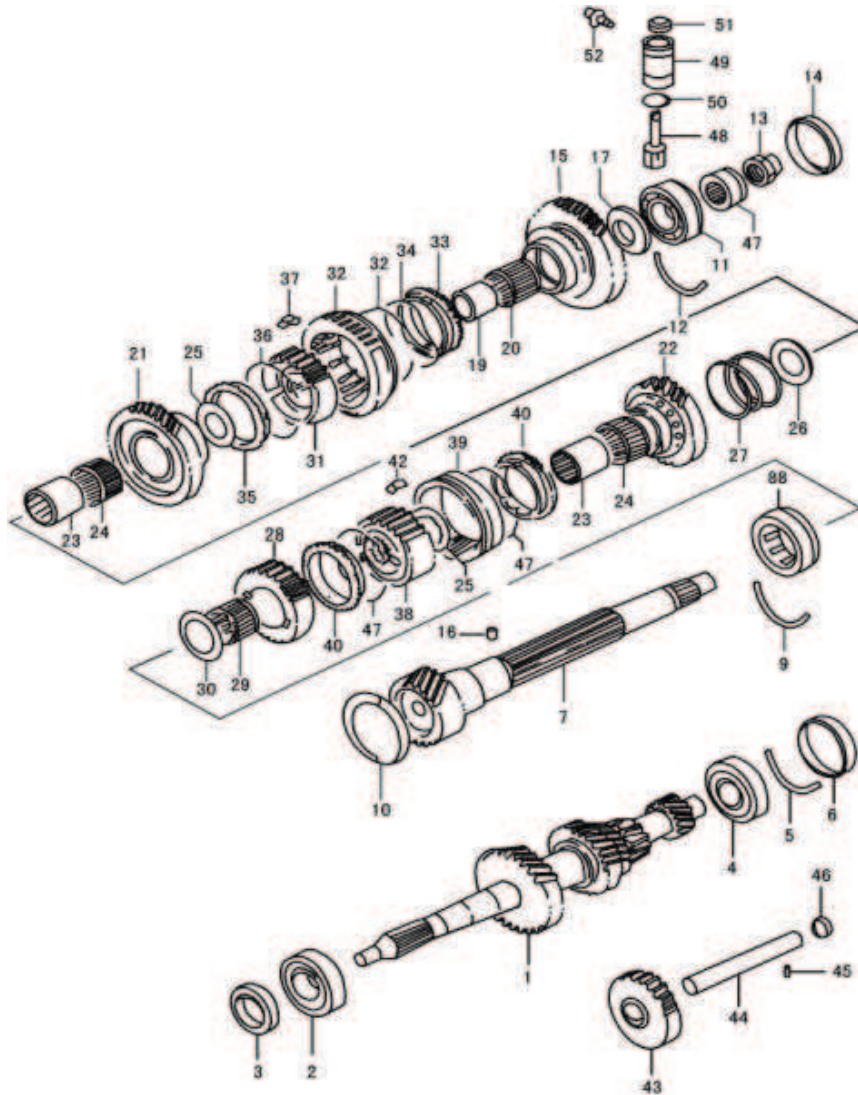
No.	Code name	Description	Qty
12	1701012	Thrust ring of countershaft bearing (left)	1
13	1701219	Tight nut of countershaft	1
14	1701050	Sealing cap assembly of Countershaft (left)	1
15	1701211	The first gear of countershaft	1
16	GB309—84	Needle P2×7.8	1
17	1701203	The first gear gasket of countershaft	1
18	GB308—84	Steel ball4.7625G60b	18
19	1701204	First gear bushing ring of countershaft	19
20	GB5846—86	Needle bearing K253023	20
21	1701212	The second gear of countershaft	21
22	1701213	The third gear of countershaft	22

16 FIRST SHAFT AND COUNTERSHAFT



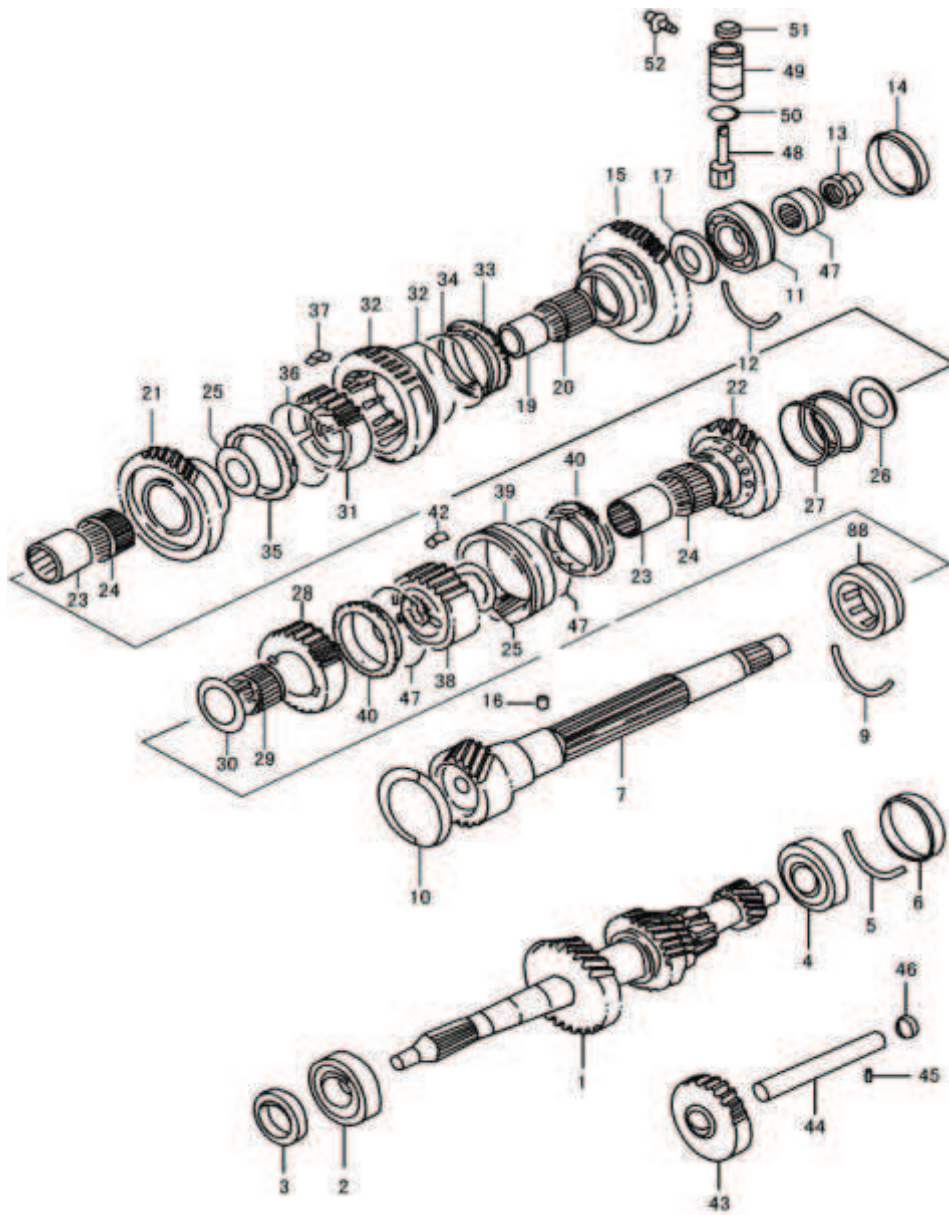
No.	Code name	Description	Qty
23	1701012	The second and the third gears bushing ring	2
24	GB5846—86	Needle bearing K303520	2
25	1701206	The second and the third gears gasket	2
26	1701208	The third gear spacer	1
27	1701207	The second and the third gears pressure spring	1
28	1701214	Fourth gear of countershaft	1
29	GB5846—86	Needle bearing K253020	1
30	1701209	The fourth gear gasket	1
31	1701232	Low synchronizer shell	1
32	1701231	Low synchronizer sleeve	1
33	1701215	Low synchronizer ring (left)	1

16 FIRST SHAFT AND COUNTERSHAFT



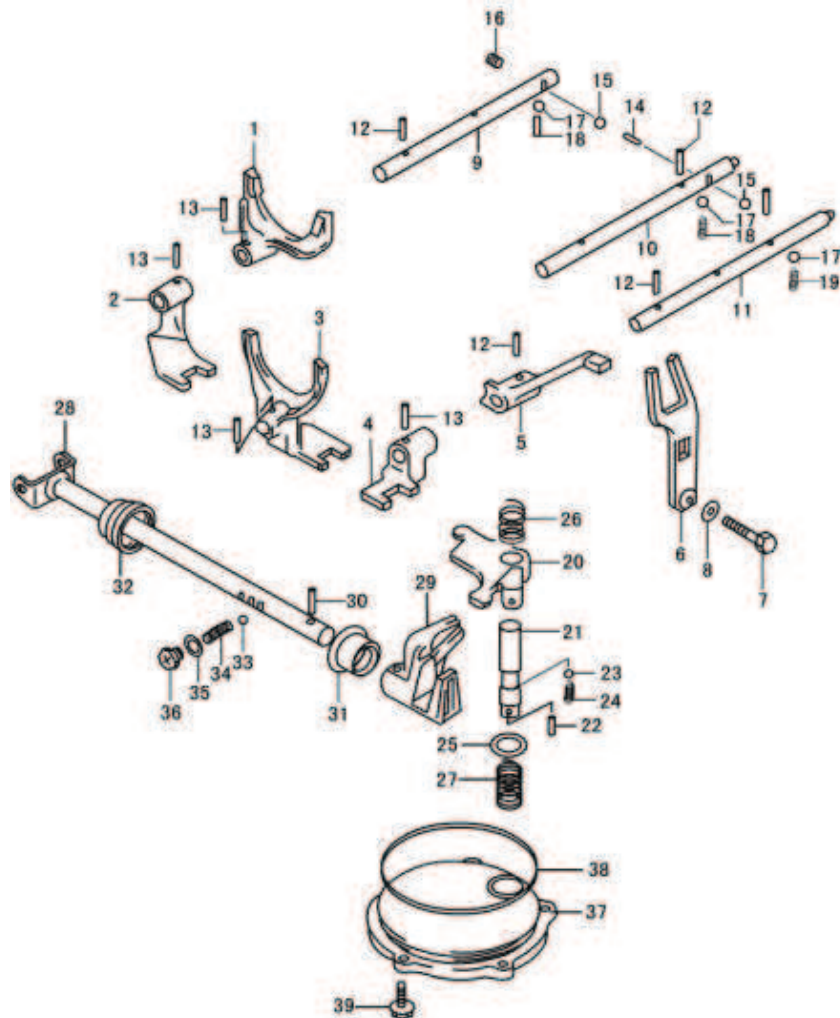
No.	Code name	Description	Qty
34	1701217	Low synchronizer ring spring	1
35	1701216	Low synchronizer ring (right)	1
36	1701233	Low synchronizer spring	2
37	1701234	Synchronizer guide block	3
38	1701242	High synchronizer shell	1
39	1701241	High synchronizer sleeve	1
40	1701218	High synchronizer ring	2
41	1701243	High synchronizer spring	2
42	1701234	Synchronizer guide block	3
43	1701080	Racing gear of reverse gear	1
44	1701015	Reverse gear shaft	1

16 FIRST SHAFT AND COUNTERSHAFT



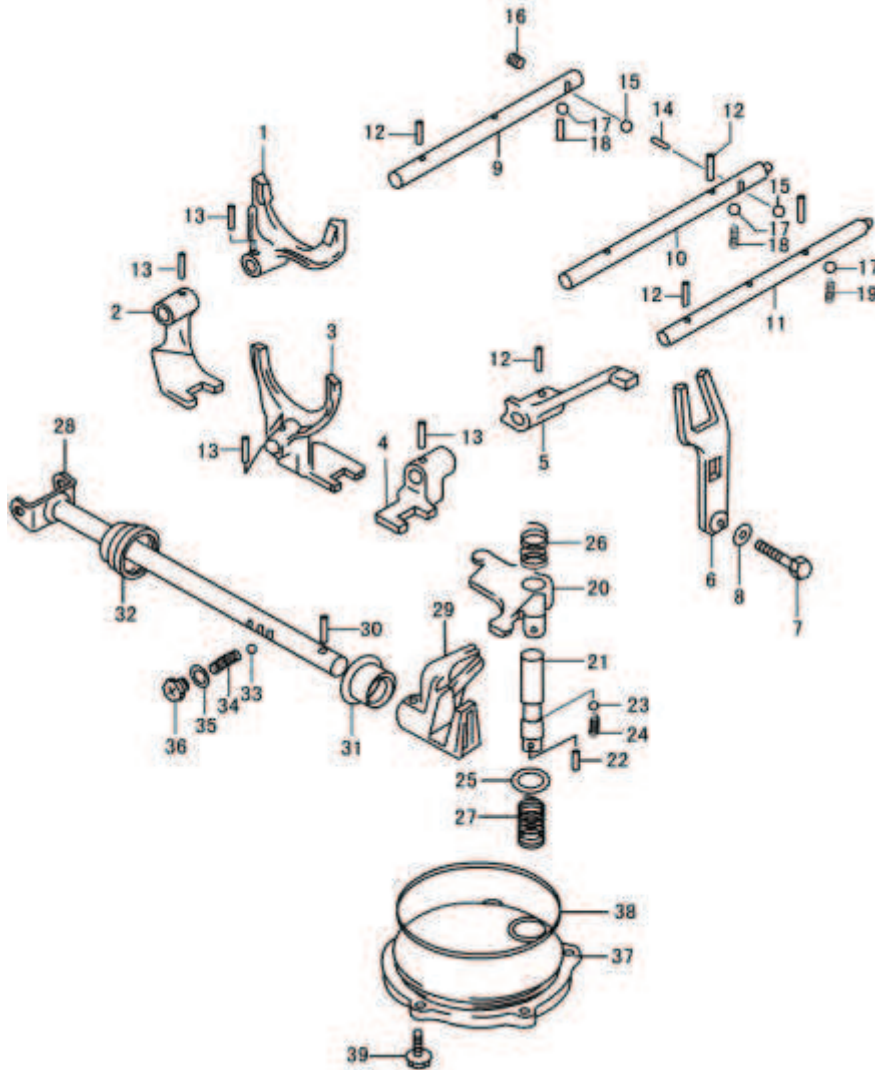
No.	Code name	Description	Qty
45	GB119—86	Pin D5×13	1
46	1701070	Sealing cap assembly of reverse gear shaft	1
47	1701202	Speed gage worm	1
48	1701209	Speed gage worm wheel	1
49	1701401	Speed gage worm wheel bushing ring	1
50	GB3452.1—82	“O” type seal ring	1
51	1701410	Seal ring assembly of Speed gage worm wheel	1
52	1701028	Speed gage thrust bolt	1

17 GEAR SHIFTED GEAR FORK



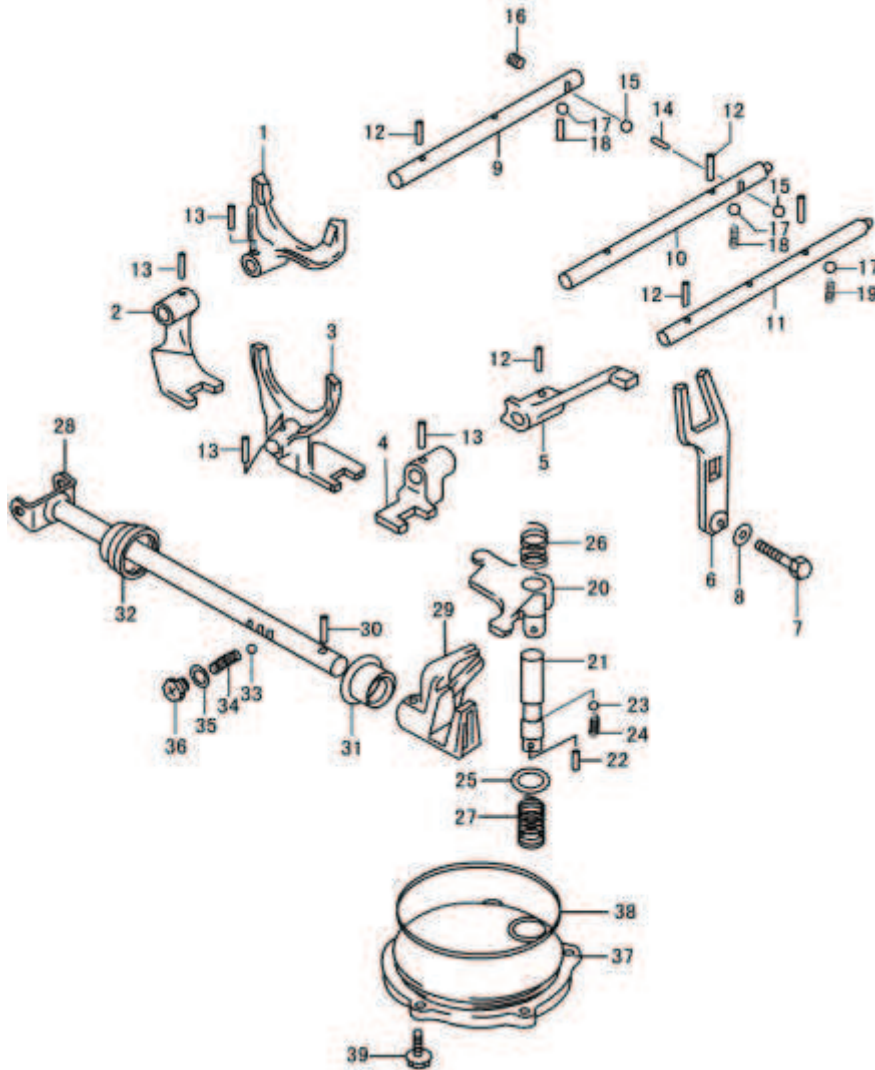
No.	Code name	Description	Qty
1	1702014	Shift fork for the first gear	1
2	1702017	Shift fork for the first and the second gears	1
3	1702015	Shift fork for the third and the fourth gears	1
4	1702012	Reverse gear shift fork	1
5	1702011	Reverse gear shift cantilever	1
6	1702060	Shift fork assembly of reverse gear	1
7	GB5783—86	Bolt M10×1.25×35	1
8	1702019	Shift fork washer of reverse gear	1
9	1702014	Shift lever for first and the second gears	1
10	1702018	Shift lever for third and the fourth gears	1
11	1702016	Reverse gear shift lever	1

17 GEAR SHIFTED GEAR FORK



No.	Code name	Description	Qty
12	GB879—86	Pin 4.5×18	4
13	GB879—86	Pin 4.5×20	4
14	GB309—84	Needle 3×9.8	1
15	GB308—84	Steel ball 9.5250G60b	2
16	1701021	Hole plug	1
17	GB308—84	Steel ball 9.5250G60b	3
18	1702021	Locating spring of high and low speed shift level	2
19	1702022	Locating spring	1
20	1702082	Transposition Rocker arm	1
21	1702081	Transposition shaft	1
22	GB119—86	Pin D4×8	1

17 GEAR SHIFTED GEAR FORK



No.	Code name	Description	Qty
23	GB308—84	Steel ball 7.9375G60b	1
24	1702029	Locating spring	1
25	1702026	Transposition shaft washer	1
26	1702024	Long spring of Transposition shaft	1
27	1702025	Short spring of Transposition shaft	1
28	1702070	Shift shaft assembly	1
29	1702028	Transposition shaft rocker	1
30	GB879—76	Pin 5×22	1
31	1702040	Seal ring assembly of shift shaft	1
32	1702027	Dirt guard of Shift shaft	1
33	GB308—84	Steel ball 7.9375 G60b	1